

Having trouble viewing this email? [Click here](#)

Hi, just a reminder that you're receiving this email because you have expressed an interest in Chart SeQual Technologies Inc. Don't forget to add taylor.erwin@chartindustries.com to your address book so we'll be sure to land in your inbox.

You may [unsubscribe](#) if you no longer wish to receive our emails.



Med Tips

In This Issue

[Product Information](#)
[Helpful Hints / FAQs](#)
[Service Schools & Tradeshow](#)
[Contact Us](#)

PDF Version

To view Med Tips in PDF, [click here](#).

Join Our List

[Join Our Mailing List!](#)

January, 2012

PRODUCT INFORMATION

CAIRE Serial Number Changes

Effective January 1, 2012 the serial number structure of all CAIRE-SeQual products will be standardized. Below is an example of the new serial number structure:

CBB3011450123

The serial number has 5 distinct sections:

1. The site of manufacture

CB = Ball Ground, GA, USA

SD = San Diego, CA, USA

GP = Chengdu, China

2. Internal code representing the product line:

B09 = Medical Concentrators (Eclipse, Integra)

B30 = Liquid Oxygen Reservoirs (Companion, HELiOS, Liberator, Low Loss)

B31 = Liquid Oxygen Portable (Companion, Hi-Flow, HELiOS, Sprint, Stroller)

B37 = OCD Liquid Oxygen Portables (Spirit)

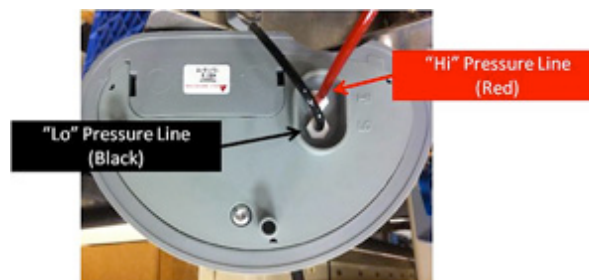
3. The year of manufacture ('11' means the device was manufactured in 2011)
4. The week of manufacture ('45' means the device was manufactured the 45th week of the year)
5. Sequential serial number of the number of devices produced that week.

HELiOS Reservoir Contents Indicator

The electronic contents indicator on the HELiOS reservoir can be ordered as a replacement part using part number #B-702207-00.



When attaching a new contents indicator, the reservoir must be warm and empty. Be sure that the red and black contents indicator lines are properly connected and not kinked, blocked, or leaking. The black line is the "lo" line and runs from the contents indicator to the relief/economizer valve. The red line is the "hi" line and runs from the contents indicator to the inside of the tank. We recommend that the unit is pressurized to 20 psi (1,4 bar) and then tested for leaks in the tube connections.



Eclipse Strain Relief

The rubber strain relief on the Eclipse can be ordered as a replacement part. Order it using part number #4106-1-SEO

replacement part. Order it using part number #4100-1-5LQ.



HELPFUL HINTS / FAQs

Portable Filling Procedure

CAIRE recommends that the vent valve should be toggled at least once during the first 30 seconds of filling for all HELiOS and Companion portable units (H300, H850, C500, C550, C1000, and C1000T).

To toggle the vent valve, the valve should be closed and re-opened one or more times approximately 30 seconds after the fill has begun. This will help to prevent the vent valves from freezing in the open position.



Moisture Infiltration into Liquid Oxygen Reservoirs

Moisture infiltration into liquid oxygen reservoirs can lead to ice build-up in the tank. Ice formation can lead to several problems including: freezing of fill connectors or relief valves in the open position, blockages in the flow path, and inaccurate readings on contents indicators.

The following techniques should be practiced to prevent moisture infiltration into reservoirs:

- Before filling each reservoir, wipe the fill connectors dry on both the reservoir and the fill adaptor using a lint-free cloth.



- Purge the transfer line before beginning the filling process by depressing the poppet of the fill adaptor against a hard, metallic surface. When LOX begins spraying from the fill connector, the line is completely purged.



- Always store the reservoir with the vent valve and flow control valve in the closed position.
- Always have the flow control knob in the off ('0')

position when filling a reservoir.

Eclipse Compressor Replacement

QUESTION:

Can the Eclipse compressor be rebuilt?

ANSWER:

No. The Eclipse compressor is only available as an entire assembly.

QUESTION:

I just ordered a replacement compressor assembly (part number #SP5999-SEQ) for an Eclipse. The instruction sheet that comes with it mentions a "Type 1" and "Type 2" compressor and says that the Eclipse software should be configured to the appropriate compressor type. What does this mean and how do I go about checking my compressor type?

ANSWER:

Type 1 compressors are no longer available. All replacement compressors (#SP5999-SEQ) that are ordered will be Type 2.

Before beginning the repair and replacement, you will first need to determine the Type of compressor that is currently in Eclipse that you are servicing. The easiest way to do this is to visually examine the label on the front of the compressor box. "-400" compressors are Type 1, and "-401" compressors are Type 2.

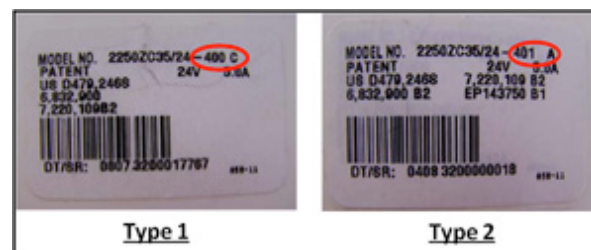


Image above denotes location of the "-400" and "-401" codes on each type of label.

If the original compressor in the Eclipse is Type 2:

- No configuration is required. The replacement compressor can be installed and the Eclipse is ready for use.

If the original compressor in the Eclipse is Type 1:

- Configuration is required. The EDAT software is required to replace a Type 1 compressor with a Type 2 compressor.
- Use the following steps to complete the installation of a new compressor.

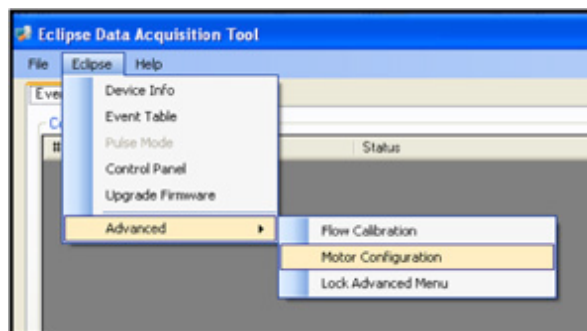
NOTE: Replacing a Type 1 compressor with a Type 2 compressor without configuring the Eclipse will cause the Eclipse to function improperly.

1) Check the software version of the Eclipse and upgrade if necessary.

1. If the software version is 4.2 or lower on the Eclipse 1, or 2.1 or lower on the Eclipse 2 - - A software upgrade is required. Use EDAT and a red software upgrade USB key (part number #5977-5-SEQ) to perform the upgrade. A red USB upgrade will bring an Eclipse 1 to version 5.0 software or an Eclipse 2 to version 3.0 software.
2. If the software version is 5.0 on an Eclipse 1, or 2.3 or higher on an Eclipse 2 - - A software upgrade is not required.

2) Install the replacement compressor.

3.) Using EDAT, configure the motor type to "Type 2". The motor configuration is located in the advanced menu.



NOTE: For specific instructions on how to perform firmware upgrades & motor configuration, please reference the EDAT user's manual provided with the program.

ACCESSORIES

Liquid Oxygen Portable Carrying Cases

Carrying cases are available for all CAIRE liquid oxygen portables. Please use the table below as a guideline for ordering the carrying accessory that is compatible with each model.

Portable	Carrying Accessory	Part Number
Companion C500 & C550	Hip Pack	#B-701654-00
Companion C1000 & C1000T	Back Pack	#10018138
HELiOS H300	Hip Pack	#B-701654-00
HELiOS H850	Back Pack	#069209
Spirit 300	Hip Pack	#11843361
Spirit 600 & 1200	Back Pack	#13214825
Sprint/Stroller/Hi-Flow	Back Pack	#13214825

SERVICE SCHOOLS & TRADESHOWS

Mark Your Calendars for our Upcoming 2012 Service Schools!

USA

Concentrator Technical Training in English

February 20-21

Ball Ground, GA

LOX Technical Training in English

Feb 22-23

Ball Ground, Georgia

Concentrator Technical Training in English

May 7-8

Ball Ground, GA

LOX Technical Training in English

May 9-10

Ball Ground, Georgia

Concentrator Technical Training in English

August 13-14

Ball Ground, GA
LOX Technical Training in English
August 15-16
Ball Ground, Georgia
Concentrator Technical Training in English
November 5-6
Ball Ground, GA
LOX Technical Training in English
November 7-8
Ball Ground, Georgia

To register for 2012 US LOX Training, [download this form](#).
To register for 2012 US Concentrator Training, [download this form](#).

Europe

LOX Technical Training in German
February 15 & 16
Wuppertal, Germany
LOX Technical Training in Italian
February 22 & 23
Padova, Italy
LOX Technical Training in French
March 7 & 8
Fonsorbes, France
LOX Technical Training in English
April 17 & 18
Wuppertal, Germany
Concentrator Technical Training in English
May 22 & 23
Wuppertal, Germany
Concentrator Technical Training in German
June 13 & 14
Wuppertal, Germany
Concentrator Technical Training in French
June 20 & 21
Fonsorbes, France
LOX Technical Training in German
September 5 & 6
Wuppertal, Germany
LOX Technical Training in French
October 17 & 18
Fonsorbes, France
LOX Technical Training in Italian
November 14 & 15
Padova, Italy

For more information on the 2012 European trainings, please contact Jim Gibson at jim.gibson@chart-ind.com.

Tradeshows

We'll also be present at the following tradeshows, so feel free to stop at our booth! To find out more about any of the following shows, please click on its title and you will be directed to the show site.

[Arab Health Congress](#)

January 23th-26th
Dubai, UAE
Booth #1F14

[Georgia Association of Medical Equipment Services Winter Meeting](#)

January 18th-19th
Atlanta, GA USA

[French Respiratory Congress \(CPLF\)](#)

January 27th-29th
Lyon, France
Stand #41

CONTACT US

For ordering information contact Customer Service:

United Kingdom	+44 (0) 1344 403 100
France	+33 (0) 9707 54 646
Germany	+49 (0) 202 739 55429
Italy	+39 049 784 0142
	customerservice.europe@chart-ind.com
Australia/New Zealand	+61 2 9749 4333
Asia/Pac Rim	770.721.7759
The Americas	770.721.7759
US Toll Free	800.482.2473
	customerservice.usa@chart-ind.com

For technical information contact Technical Service:

United Kingdom	+44 (0) 1344 403 100
France	+33 (0) 5610 82 977
Germany	+49 (0) 202 739 55407
Italy	+39 049 644 498
	techservice.europe@chart-ind.com
Asia/Pac Rim	770.721.7759
	techservice.usa@chart-ind.com

The Americas	770.721.7759 techservice.usa@chart-ind.com
US Toll Free	800.482.2473 techservice.usa@chart-ind.com

[Forward email](#)



Try it FREE today.

This email was sent to snystrom@sequal.com by taylor.erwin@chartindustries.com | [Update Profile/Email Address](#) | Instant removal with [SafeUnsubscribe™](#) | [Privacy Policy](#).

Chart Industries | 2200 Airport Industrial Dr. | Ste. 500 | Ball Ground | GA | 30107