



# *SERVICE BULLETIN*

PN: 21190303

**RELEASE DATE:** August 29, 2017

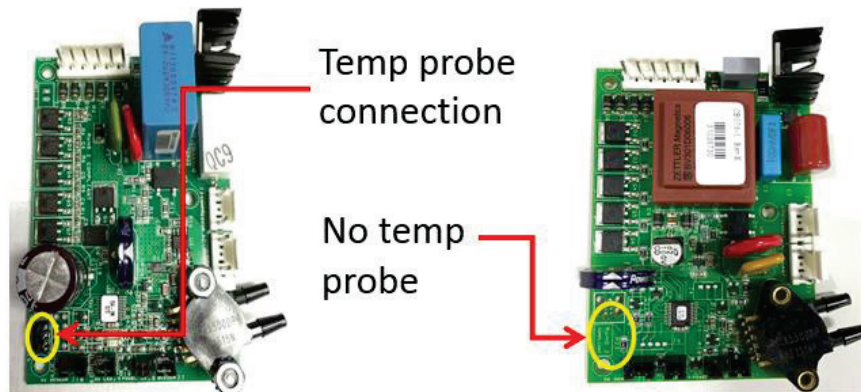
**REVISION DATE(S):** November 8, 2017 (Rev B), March 11, 2019 (Rev C)

**MODEL:** VisionAire 5 Oxygen Concentrators

**ISSUE:** Change to VisionAire Main Circuit Board

**NOTES:** Effective September, 2017 the VisionAire 5 main circuit board will change entirely from item CB151-1 to CB078-1 (for 115V models) and CB078-2 (for 230V models). CB078 has been used on some 120V models since Sept 1<sup>st</sup>, 2014 and will now be extended to all models of the VisionAire 5.

The updated board will no longer have the temperature sensor probe connection and as a result the 5 beep high temperature alarm will no longer be featured on VisionAire units made with these updated boards. The VisionAire units have a thermal protection switch attached to the compressor stator that will shut down the compressor in the event the compressor overheats (this switch activates at 145°C). For these newer units, the overheating condition will cause this thermal switch to shut down the compressor, which results in low system pressure and the 3 beep low pressure alarm.



**CB102-1 or CB151-1 (all voltages)**

**CB078-1 (115V) CB078-2 (230V)**

*Figure 1. Circuit board comparison*

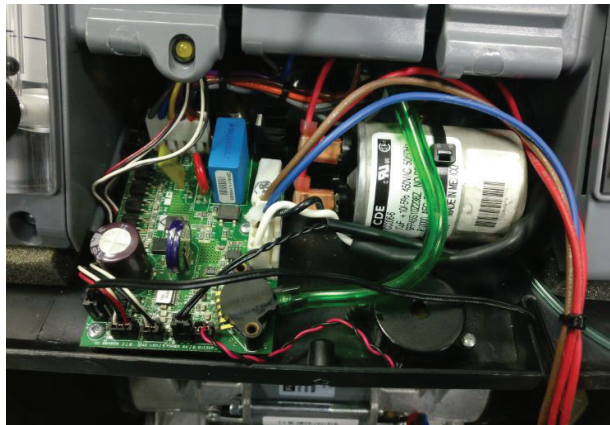
CB078 circuit boards may be used for all service parts and can be retrofitted into VisionAire 5 models that were originally built with CB151 or CB102 circuit boards. CB151 or CB102 boards should not be installed in units designed to use CB078, as the unit will need an additional temperature sensor and may not meet RoHS 2 or electromagnetic interference compliance if older boards are used. CB151 boards can still be used in units that were originally equipped with CB102 or CB151 boards (while supplies last).

### **Instructions to replace previous circuit board with current CB078-1 or CB078-2**

***Note: be sure to use proper electrostatic discharge protection prior to handling any circuit boards on the device.***

Step 1: Remove front panel.

Step 2: Pull the compressor enclosure out from the center section as far as possible (may require disconnecting pressure feed tubes to sieve beds)



*Figure 2. CB151 or CB102 style circuit board*

Step 3: Disconnect the pressure sensor tube and all wires connecting the circuit board except the valve wire harness. Remove and discard the temperature probe (may require removing the compressor enclosure cover).



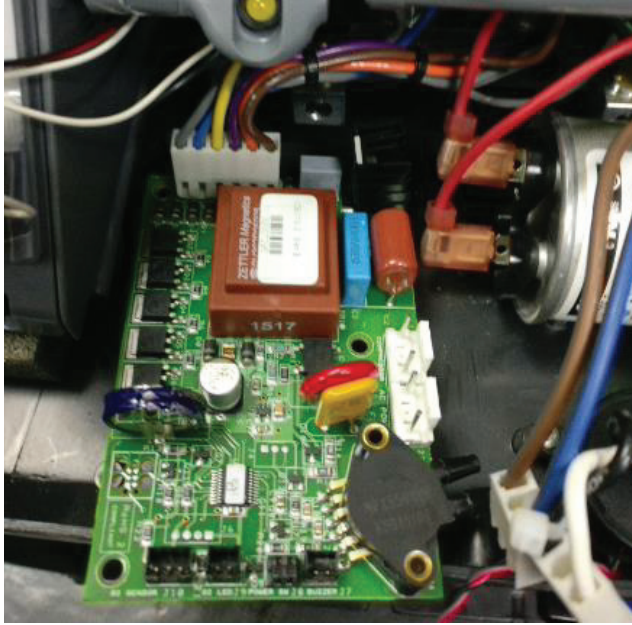
*Figure 3. Board connections removed*

Step 4: Remove the three circuit board screws and then disconnect the valve wire harness.



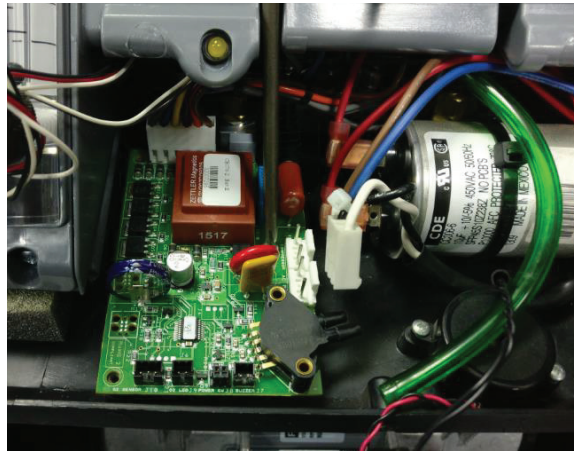
*Figure 4. Screws and valve wire harness disconnected*

Step 5: Connect replacement circuit board to the valve wire harness.



*Figure 5. Valve wire harness connected*

Step 6: Reinstall the three circuit board screws



*Figure 6. Screws re-installed*

Step 6: Connect the pressure sensor tube and all remaining wiring connections to the circuit board. Reinstall front panel.

**CONTACT:** For technical questions or concerns, contact Technical Service:

USA: 800-482-2473

[www.cairemedical.com](http://www.cairemedical.com)

Europe: +44 (0) 118 936 7060

[www.cairemedical.com](http://www.cairemedical.com)

For ordering information or general inquiries, contact Customer Service:

USA: 800-482-2473

[www.cairemedical.com](http://www.cairemedical.com)

Europe: +44 (0) 118 936 7060

[www.cairemedical.com](http://www.cairemedical.com)

*Copyright © 2019 CAIRE Inc. CAIRE Inc. reserves the right to discontinue its products, or change the prices, materials, equipment, quality, descriptions, specifications and/or processes to its products at any time without prior notice and with no further obligation or consequence. All rights not expressly stated herein are reserved by us, as applicable.*