

Having trouble viewing this email? [Click here](#)

Hi, just a reminder that you're receiving this email because you have expressed an interest in Chart SeQual Technologies Inc. Don't forget to add taylor.erwin@chartindustries.com to your address book so we'll be sure to land in your inbox.

You may [unsubscribe](#) if you no longer wish to receive our emails.



Med Tips

In This Issue

[Product Information](#)
[Helpful Hints / FAQs](#)
[Accessories](#)
[Service Schools & Tradeshow](#)
[Contact Us](#)

PDF Version

To view Med Tips in PDF, [click here](#).

Join Our List

[Join Our Mailing List!](#)

November, 2011

PRODUCT INFORMATION

Concentrator Usage

All CAIRE-SeQual concentrators should be run continuously for at least two hours every month as part of regular maintenance.

This recommendation applies especially to units that are left in stock by a provider, or units that are not used by a patient for a prolonged period of time. Monthly run-time will help to ensure that all of the internal parts will operate properly when the unit is returned to service. It can be achieved by either running the concentrator for 1 hour every 2 weeks or by running it for 2 hours once every month.

Integra Replacement ATF & Gear Motor

The table below is a guideline for ordering replacement ATF assemblies and gear motors for Integra concentrators. The ATF assembly includes the 11 sieve canisters and the gear motor. The gear motor is the only serviceable part of the

assembly.

| Model | Max Flow Rate | Voltage | ATF Part # | Gear Motor Part # |
|------------------------------|---------------|-----------|-------------|-------------------|
| 2063, 2380 | 5 LPM | 120V/60Hz | SP2040V-SEQ | 7398-SEQ |
| 2371, 2363 | 5 LPM | 220V/50Hz | SP2030V-SEQ | 1258-SEQ |
| 9786, 9785, 2785, 2786 | 7 LPM | 120V/60Hz | SP3428V-SEQ | 7350-SEQ |
| 9622, 9620, 2622, 2620 | 10 LPM | 120V/60Hz | SP2640V-SEQ | 7371-SEQ |
| 9623, 9621, 2623, 2621 | 10 LPM | 220V/50Hz | SP2630V-SEQ | 7350-SEQ |

Note that the only model Integra concentrators that are currently sold and produced are the 10LPM EZ models (9620, 9621, 9622, 9623). Although the other models are no longer sold, their service and replacement parts, such as the ATF, are still available.

Breathing From Liquid Oxygen Reservoirs

Adaptors and extensions are required to allow for the attachment of a cannula to any liquid oxygen reservoir. The figure below is a guideline for ordering replacement parts that allow CAIRE reservoirs to be used as a source of continuous oxygen.





Figure 1 -- Adaptors and Extensions Guide

HELPFUL HINTS / FAQs

EDAT & Eclipse Battery Calibration

It is recommended that the Eclipse power cartridge be calibrated at least once monthly. Calibration is part of properly caring for the dual-cell lithium ion battery. It will both maximize the life of the battery and ensure that its operating times are maximized. Battery calibration consists of completely draining the cartridge by running the Eclipse on battery power alone, allowing the cartridge to cool, and then charging it fully from its empty state.

The EDAT (Eclipse Data Acquisition Tool) software can be a useful tool to determine if battery calibration is necessary. Under the power table of real-time data on the EDAT home screen, EDAT displays the electric charge of each battery cell in amp-hours as "Batter1 ICA" & "Battery2 ICA" (highlighted below in red).

It is recommended that an Eclipse power cartridge be calibrated if these two numbers differ consistently by more than 0.1 amp-hours over a 5-minute period.

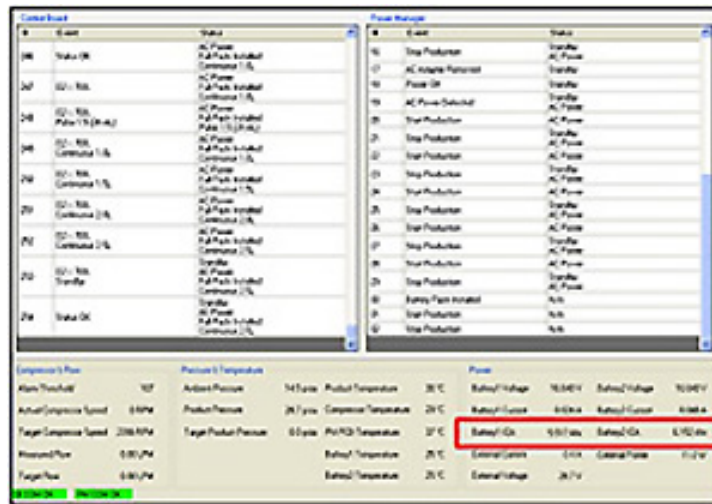


Figure 2 -- Please note the location of the values used for battery calibration on the EDAT display above

HELiOS Demand Flow Testing

Q: I need to test the conservers on my H300 and H850 to be sure they are delivering appropriate flow rates on demand settings. What values should I be testing?

A: Demand flow is delivered in two stages on the HELiOS Portables: bolus and tail flow. Either or both of these values can be used to test the demand conserver.

When the patient initially inhales through the dual-lumen cannula, a puff ("bolus") of oxygen is delivered. This bolus is a set volume of oxygen measured in mL. After the bolus has been delivered, the HELiOS conserver continues to deliver a steady stream of continuous oxygen flow ("tail flow") measured in LPM. The tail flow continues as long as the patient is inhaling. As soon as the patient begins to exhale, the conserver closes and the tail flow stops.

The tables below show the values of oxygen delivered in both the bolus and tail-flow stage of each demand flow setting for the H300 & H850. These are the values that should be used to verify the functionality of the conserver.

HELiOS Plus H300 Demand Flow

| Demand Setting | Bolus Size (mL) | Tail Flow (LPM) |
|----------------|-----------------|-----------------|
|----------------|-----------------|-----------------|

| Setting | (mL) | (LPM) |
|---------|------|-------|
| 1 | 9.0 | 0.50 |
| 1.5 | 9.0 | 0.65 |
| 2 | 12.0 | 0.75 |
| 2.5 | 12.0 | 1.00 |
| 3 | 15.0 | 1.50 |
| 3.5 | 15.0 | 1.75 |
| 4 | 15.0 | 2.00 |

HELiOS Marathon H850 Demand Flow

| Demand Setting | Bolus Size (mL) | Tail Flow (LPM) |
|----------------|-----------------|-----------------|
| D1.5 | 9.0 | 0.65 |
| D2 | 12.0 | 0.75 |
| D2.5 | 12.0 | 1.00 |
| D3 | 15.0 | 1.50 |
| D4 | 15.0 | 2.00 |

Eclipse Protective Cover

A protective cover for the Eclipse concentrator is available. This cover allows for full access and functionality of the Eclipse. It contains a plastic window for the control panel, access to the handle and cart attachment, and zipper openings to access the inlet filter and power cartridge.

The cover is used to protect the body of the Eclipse from external wear and tear. While it will protect against minor spills and inclement weather, the case is not completely waterproof and does not make the Eclipse waterproof. The protective cover can be ordered using part number #5052-SEQ.





Figure 2 -- Eclipse Protective Cover

Liquid Oxygen Rollerbase Casters

Replacement casters are available for all CAIRE-manufactured liquid oxygen rollerbases. The casters are sold in a set of 5 wheels. All casters are 3 in (7.62 cm) in diameter.

There are two sets available. The set for CE marked rollerbases has 3 casters with brakes and 2 without brakes.

The set for non-CE marked rollerbases has 5 wheels without brakes.

The table below gives the part numbers for the caster sets for CAIRE rollerbases.

| CE Rollerbases | Non-CE Rollerbases |
|----------------|--------------------|
| 14880379 | 14880361 |

Portable Test Fixture

CAIRE offers a portable test fixture for use when testing and servicing liquid oxygen portables. This stand attaches to the female fill connector of the portable, and keeps it in an upright position when its case is removed. The test fixture can be ordered using part number #B-778202-00.



Figure 4 -- Portable Test Fixture

SERVICE SCHOOLS & TRADESHOWS

Service Schools

Concentrator Technical Training in German

November 9 & 10
Wuppertal, Germany

LOX Technical Training in French

November 15 & 16
Toulouse, France

LOX Technical Training in English

December 6 & 7
Ball Ground, Georgia

Concentrator Technical Training in English

December 13 & 14
Ball Ground, Georgia

Concentrator Technical Training in French

December 14 & 15
Wuppertal, Germany

Mark Your Calendars for our Upcoming 2012 European Service Schools!

LOX Technical Training in German

February 15 & 16
Wuppertal, Germany

LOX Technical Training in Italian

February 22 & 23
Padova, Italy

LOX Technical Training in French

March 7 & 8
Fonsorbes, France

LOX Technical Training in English

April 17 & 18
Wuppertal, Germany

Concentrator Technical Training in English

May 22 & 23
Wuppertal, Germany

Concentrator Technical Training in German

June 13 & 14

Wuppertal, Germany

Concentrator Technical Training in French

June 20 & 21

Fonsorbes, France

LOX Technical Training in German

September 5 & 6

Wuppertal, Germany

LOX Technical Training in French

October 17 & 18

Fonsorbes, France

LOX Technical Training in Italian

November 14 & 15

Padova, Italy

To register for US LOX Training, [download this form](#).

To register for US Concentrator Training, [download this form](#).

For more information on the European trainings, please contact Jim Gibson at jim.gibson@chart-ind.com.

Tradeshows

We'll also be present at the following tradeshows, so feel free to stop at our booth:

American Lung Association Healthy Lung Expo

November 7th

Bloomington, Minnesota

American Association for Respiratory Care

November 5th - November 8th

Tampa, Florida

Medica

November 16th - November 19th

Dusseldorf, Germany

French Congress of Pneumology

January 27th-29th

Lyon, France

CONTACT US**For ordering information contact Customer Service:**

| | |
|----------------|----------------------|
| United Kingdom | +44 (0) 1344 403 100 |
|----------------|----------------------|

| | |
|--------|---------------------|
| France | +33 (0) 9707 54 646 |
|--------|---------------------|

| | |
|---------|-----------------------|
| Germany | +49 (0) 202 739 55429 |
|---------|-----------------------|

| | |
|-------|------------------|
| Italy | +39 049 784 0142 |
|-------|------------------|

customerservice.europe@chart-

ind.com

Australia/New Zealand +61 2 9749 4333

Asia/Pac Rim 770.721.7759

The Americas 770.721.7759

US Toll Free 800.482.2473

customerservice.usa@chart-ind.com

For technical information contact Technical Service:

United Kingdom +44 (0) 1344 403 100

France +33 (0) 5610 82 977

Germany +49 (0) 202 739 55407

Italy +39 049 644 498

techservice.europe@chart-ind.com

Asia/Pac Rim 770.721.7759

techservice.usa@chart-ind.com

The Americas 770.721.7759

techservice.usa@chart-ind.com

US Toll Free 800.482.2473

techservice.usa@chart-ind.com

[Forward email](#)



Try it FREE today.

This email was sent to snystrom@sequal.com by taylor.erwin@chartindustries.com | [Update Profile/Email Address](#) | Instant removal with [SafeUnsubscribe™](#) | [Privacy Policy](#).

Chart Industries | 2200 Airport Industrial Dr. | Ste. 500 | Ball Ground | GA | 30107