

Having trouble viewing this email? [Click Here](#)

Hi, just a reminder that you're receiving this email because you have expressed an interest in CAIRE Inc. Don't forget to add amy.mcdurmon@chartindustries.com to your address book so we'll be sure to land in your inbox. Visit our website to view CAIRE's MedTips:  
[http://www.cairemedical.com/Support/Med\\_Tips.aspx](http://www.cairemedical.com/Support/Med_Tips.aspx)

You may [unsubscribe](#) if you no longer wish to receive our emails.



## Med Tips

### In This Issue

[Product Information](#)  
[Helpful Hints/FAQs](#)  
[Accessories](#)  
[Service Schools & Tradeshows](#)  
[Contact Us](#)

### PDF Version

To view Med Tips in PDF, [click here.](#)

### Join Our List

[Join Our Mailing List!](#)

October 2014

## PRODUCT INFORMATION

### NEW eTask Tool for Eclipse 5 and eQuinox

We are pleased to announce the release of the new CAIRE eTASK app for the Apple iPhone and iPad. In conjunction with the release of the smartphone application, we are also releasing an updated Windows version of the program for use on a PC. The new PC version is more simplified and user-friendly, and also includes updated data for the Eclipse 5 and eQuinox. Both of these are now available and are free of charge.

eTASK is used to calculate pulse flow equivalents for a patient using an Eclipse or eQuinox based on their continuous flow prescription. It also calculates battery durations based on flow rate and breath rate. eTASK is only compatible with the Eclipse and eQuinox POCs.

### eTASK preforms the following calculations:

1. eTASK takes a patient's continuous flow prescription setting and breath rate and uses clinical formulas to calculate their equivalent pulse flow setting on the Eclipse or eQuinox.
  - o This gives the pulse equivalent based on clinical formulas and the performance of autoSAT. The calculations provided by eTASK will give the doctor or therapist a great starting place or guideline to begin titrating the patient on pulse flow. A patient

- should always be tested by a doctor or therapist before prescribing or approving use of pulse flow.
2. eTASK calculates battery run time for each flow setting based on a patient's breath rate. This will make planning for pulse dose use easier than ever.

[Click here](#) for a user's guide for eTASK that shows how to use both the smartphone app and the PC version.

## **Follow these links to download the programs:**

[Apple Store Link](#)

[PC Version Link](#) - Contact Technical Service by [email](#) or call 1-800-482-2473 for login information

## **Companion 1000 Fil Tube**

Effectively immediately, B-775061-SV will now be packaged with the nuts and ferrules loose and un-attached to the tube. The reason for this change is because the short length of the curve at the manifold made it difficult to bend the tube and align it with the manifold when the nuts and ferrules were attached. All other service tube part numbers will continue to be shipped with the nuts and ferrules attached. This part is the only one with the change because of its short curve at the top.

### **Installation Instructions:**

1. Install nut and ferrule onto the longer length of tubing and start threads onto QDV.
2. Adjust the upper (shorter) length of tubing to fit into manifold.
3. Install nut and ferrule onto upper (shorter) length of tubing and start threads onto manifold.
4. Tighten top and bottom nuts and check for leaks. Adjust as needed.





## HELPFUL HINTS / FAQs

### Replacing LifeStyle Product Filter FI114 installed in pre-2008 LifeStyle units

#### Parts Required:

- (1) TA098-2S, LifeStyle Mixing Tank with internal product filter
- (1) TW012-1, 7" (17.8cm) Tie wrap to secure mixing tank to center section
- (4) TW011-1, 2.8" (7.1cm) Tie wraps

#### Recommended Tools:

Philips screwdriver, wire cutters, needle nose pliers

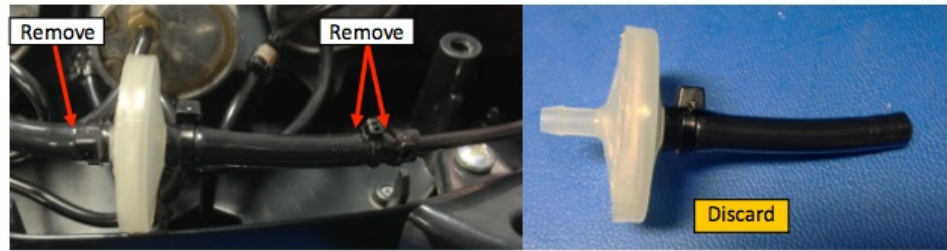
1. Remove bottom cover of unit and locate in-line product filter. **Figure 1**



**Figure 1**

2. Remove tie wrap from left side of product filter and two

small tie wraps securing smaller tubing inside larger tubing positioned to the right of product filter as shown. Discard removed filter and tubing. **Figure 2**



**Figure 2**

3. Remove approximately ¼ inch (.64cm) from open end of both large and small tubing.

4. Insert open end of small tubing into open end of larger tubing, ensuring at least ½ inch (1.27cm) of smaller tubing is inserted inside larger tubing. Secure together using two TW011-1 tie wraps.

5. Locate and replace existing mixing tank with new mixing tank, P/N TA098-2S.

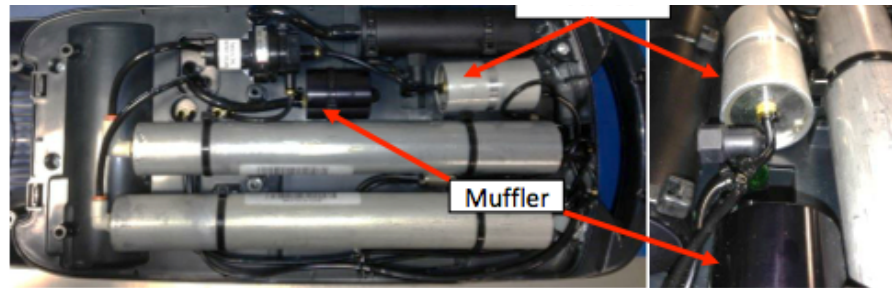
a. TA098-2S has an internal product filter installed on the end of the tank in which the brass fitting is positioned in the center of end cap. (The fitting on other end will be off centered). This is the output end of mixing tank. **Figure 3**



**Figure 3**

b. Install the mixing tank so the end with the centered brass fitting is positioned facing towards the unit's muffler. **Figure 4**





**Figure 4**

c. Secure tubing connections on mixing tank using two (2) TW011-1 tie wraps.

d. Prior to installing mixing tank, care should be taken to avoid pinching tubing under mixing tank. Secure mixing tank to center section using TW012-1 tie wrap.

6. Start concentrator. Leak test tubing connections and check unit operation and O<sub>2</sub> concentration.

This completes this procedure.

## Humidifier Adapter for VisionAire

**Q:** I previously received a tube and fitting for connecting a humidifier bottle to my VisionAire unit. Why do I now only receive one piece?

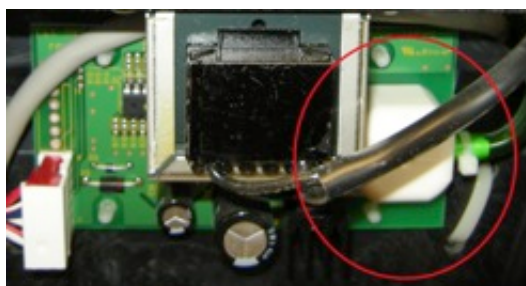
**A:** We are now using part number TU255-1 which is tubing with a female connector molded on one end and a threaded male fitting molded on the other end. This is a single piece eliminating the need to send two separate pieces (tubing and fitting).



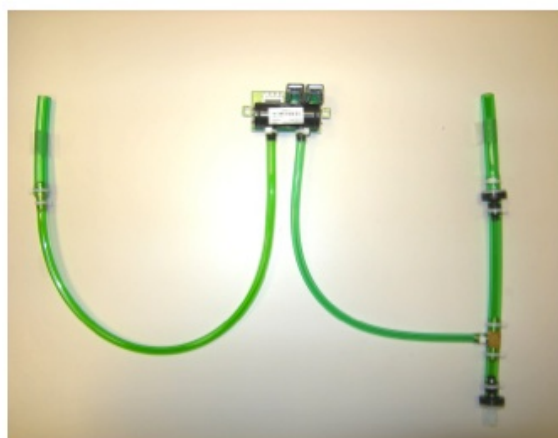


## Replacing NewLife & Intensity O2 Ceramic Monitor Circuit Boards with Ultrasonic O2 Boards

For older NewLife & Intensity units containing the ceramic sensor O2 monitoring boards as shown below, part number CB005-5 O2 monitoring boards are no longer available:



You will need to order part number KI366-1 Retrofit kit for NewLife units, or KI366-2 Retrofit kit for Intensity units. These kits will include the newer Ultrasonic O2 board seen below, and necessary parts, and instructions needed for installation:



CB124-1 1



CB124-2

**KI366-1 Retrofit kit, Ultrasonic O2 Board**

Verify kit received includes the following items:  
 (1) CB124-1 O2 monitor circuit board assembly

Recommended Tools:  
 Slotted screwdriver

(2) HA075-1	Spacer	Philips screwdriver
(2) SC007-3	Screw	Wire Cutters
(3) TW001-4	Small tie wrap	Needle-nose pliers
(2) TW002-1	Large tie wrap	
(1) WH095-3	Main wire harness	
(1) HA088-1	Hardware for O2 light: lens (IL070-1), spacer (MI368-1), lock ring (HA087-1)	
(1) SVMP-004	Instructions for HA088-1	

#### KI366-2 Retrofit kit, Ultrasonic O2 Board, Intensity

<i>Verify kit received includes the following items:</i>		<i>Recommended Tools:</i>
(1) CB124-2	O2 monitor circuit board assembly	Slotted screwdriver
(2) HA075-1	Spacer	Philips screwdriver
(2) SC007-3	Screw	Wire Cutters
(1) TW001-4	Small tie wrap	Needle-nose pliers
(2) TW002-1	Large tie wrap	
(1) WH095-3	Main wire harness	
(1) HA088-1	Hardware for O2 light: lens (IL070-1), spacer (MI368-1), lock ring (HA087-1)	
(1) SVMP-004	Instructions for HA088-1	

## INCIDENTAL FEE'S

### "No Problem Found" Fee (NPF) for CAIRE Products- -US CUSTOMERS ONLY

As a reminder, CAIRE charges an NPF fee for all returned products in which no problems are found. This charge applies to all Warranty and Non-Warranty returns. CAIRE service technicians take the utmost care in evaluating and diagnosing problems for all returned units. The fee schedule for No Problem Found units is as follows:

Concentrator equipment: \$60

LOX equipment: \$95

To help prevent an NPF scenario, we recommend you contact the CAIRE Technical Service team to assist in evaluating all problem units prior to requesting an RMA (Return Material Authorization). CAIRE Technical Service is here to support you with any technical questions, problems, or issues you may have.

You may contact CAIRE Technical Service at 800-482-2473 or [techservice.usa@chartindustries.com](mailto:techservice.usa@chartindustries.com)

### Freestyle Battery Replacement Fee

When setting up an RMA for Freestyle or Freestyle 5 units that are in warranty, you will be informed if the internal battery is out of warranty. If the battery is out of warranty, and requires replacement, it will be replaced for a fee unless the customer specifies that battery is not to be replaced.

Freestyle/Freestyle 5 Battery Fee \$195

## Inspection Fee

For non-warranty unit's set-up for quote in RMA, these units will be quoted for patient ready. Customers will be contacted with the quote, and if this quote is denied, an inspection fee will apply per unit denied. The choice can be made to have the unit scrapped at our facility, or returned to the customer. If returned, shipping will be charged to the customer.

Concentrator equipment: \$65

LOX equipment: \$95

## Damage Fee

When warranty units are received and during the repair process, they are inspected. If during this time damage not due to manufacturing defect is found, or the unit is missing components, a damage fee will apply. These damages may be structural or cosmetic.

Customer Damage Fee \$75

## Contaminated Units

Due to the risks of cross contamination of other units, units received into our facilities that are found to be contaminated will be returned un-repaired, and the return shipping will be billed to the customer. Contamination can include, but is not limited to human or animal fluids, bug infestations, rodent nest, etc.

Concentrator equipment: \$60 plus shipping

LOX equipment: \$95 plus shipping

## SERVICE SCHOOLS & TRADE SHOWS

**Mark Your Calendars for our Upcoming 2014 Service Schools!**

### USA

### **Service School Dates:**



For additional details and registration information about these trainings, please visit the ["Service Schools"](#) page on our website.

**Concentrator Training: November 10, 11, 12 in Ball Ground, GA**

**LOX Training: November 13 & 14 in Ball Ground, GA**

*\*Ball Ground trainings include a tour of our CAIRE and SeQual manufacturing facility.*

## Europe

### **2014 Service School dates have been released!**

For additional details and registration information about these trainings, please visit the ["Events & Service Schools"](#) tab of our website.

**German Concentrator Training: October 14, 15, 16 in Wuppertal, Germany**

**English LOX Training: October 28 & 29 in Wokingham, UK**

**Italian LOX Training: October 29 & 30 in Padova, Italy**

**English Concentrator Training: November 18, 19, 20 in Wokingham, UK**

## **Trade Shows**

We will be attending the following trade shows this month. We would love for you to stop by our booth!

### **Minnesota AMES**

October 2-3

Welch, MN

CAIRE

### **Pennsylvania Society for Respiratory Care**

October 2-3

Mars, PA

CAIRE

### **Moving Mountains / Tom Petty COPD Conference**

October 4th  
Denver, CO  
CAIRE

**ADMEA**  
October 8th  
Hoover, AL  
CAIRE

**MedTrade - Booth 1919**  
October 20-23  
Atlanta, GA  
CAIRE

**Medical Services of America (MSA)**  
October 27-29  
Columbia, SC

**Medtrade is October 20-23, 2014!**

**Note:** Please use this unique code for free expo access for Medtrade 2014: **CAIREMT14**. Visit the [Medtrade website](#), click on "Attendee" from the main menu, select "Register to Attend", and follow the prompts to register and enter in the code.

## CONTACT US

### For ordering information, contact Customer Service:

United Kingdom	+44 (0) 1189 367060
France	+33 (0) 561 429 411
Germany	+49 (0) 202 739 55420
Italy	+39 049 879 9601 customerservice.europe@chartindustries.com
Australia/New Zealand	+61 2 9749 4333 customerservice.australia@chartindustries.com
Asia/Pac Rim	770.721.7759 csasia@chartindustries.com
The Americas	770.721.7759
US Toll-Free	800.482.2473 customerservice.usa@chartindustries.com

### For technical information, contact Technical Service:

United Kingdom	+44 (0) 1189 367060
France	+33 (0) 561 429 411
Germany	+49 (0) 202 739 55420
Italy	+39 049 879 9601

Italy	+39 049 879 9100
	techservice.europe@chartindustries.com
Asia/Pac Rim	+61 2 9749 4333
	techservice.asia@chartindustries.com
The Americas	770.721.7759
	techservice.usa@chartindustries.com
US Toll-Free	800.482.2473
	techservice.usa@chartindustries.com

[www.CAIREmedical.com](http://www.CAIREmedical.com)

[Forward email](#)



This email was sent to julie.liberti@chartindustries.com by [amy.mcdurmon@chartindustries.com](mailto:amy.mcdurmon@chartindustries.com) | [Update Profile/Email Address](#) | Rapid removal with [SafeUnsubscribe™](#) | [Privacy Policy](#).



Chart Industries | 2200 Airport Industrial Dr. | Ste. 500 | Ball Ground | GA | 30107