



PSA Generator Module



Air Compressor Module

The Centrox™ is an oxygen generator ideal for use in many applications. The Centrox's ability to deliver up to 95% oxygen concentration at flows of up to 32 SCFH (0.84 Nm<sup>3</sup>/hr or 15 LPM) make it a great fit for medical and commercial uses requiring up to 50 psig (345 kPa or 3.5 barg).

## Features

- Self-contained (internal air compressors)
- Microprocessor controlled
- Low operating cost
- Automatic and unattended operation
- Wall or rack mount design
- Heavy duty metal enclosures
- Oxygen concentration monitor

## Typical Applications

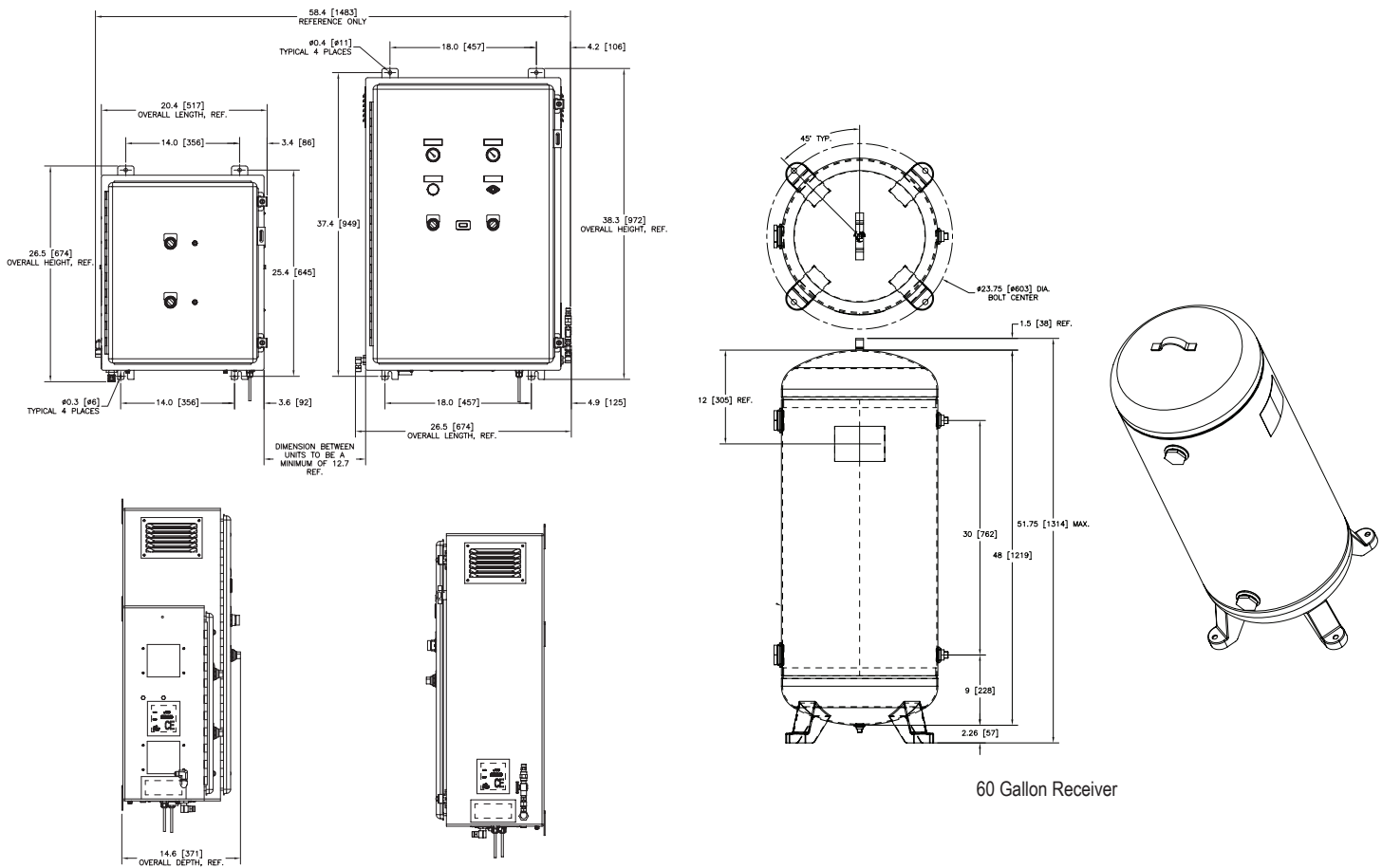
- Brazing/Soldering
- Environmental remediation
- Fish farming
- Glass work/blowing
- Ozone (generator) feed gas
- Veterinary medicine
- Nano-bubble feed gas
- Medical Oxygen Supply
- Veterinary Medicine

*Note: The 220 V ~ ±10%, 50 Hz configuration is for medical use outside of the USA.*

## Specifications

<b>Product Flow<sup>1</sup></b>	32 SCFH (0.84 Nm <sup>3</sup> /hr or 15 LPM)
<b>Product Pressure</b>	50 psig (345 kPa or 3.5 barg)
<b>Product Concentration</b>	Up to 95%
<b>Product Dew Point</b>	-100°F (-73°C)
<b>Dimensions (W x D x H) (Nominal)</b>	
○ Air Compressor Module	21 x 13 x 27 in (52 x 32 x 68 cm)
○ PSA Generator Module	27 x 15 x 38 in (68 x 37 x 97 cm)
<b>Weight</b>	
○ Air Compressor Module	100 lb (45 kg)
○ PSA Generator Module	160 lb (73 kg)
<b>Physical Connection</b>	
<b>Product Gas Outlet</b>	B size oxygen demand valve
<b>Ambient Operating Conditions</b>	Locate the oxygen generator in a well-ventilated area that is protected from weather elements and remains between 40°F (4°C) and 112°F (44°C)
<b>Control Power Requirements (Single Phase)</b>	120 V ~ ±10%, 60 Hz, 11.0 A 220 V ~ ±10%, 50 Hz, 5.5 A
<b>60 Gallon Oxygen Receiver</b>	
<b>Dimensions (Dia. x H)</b>	26 x 52 in (65 x 131 cm)
<b>Weight</b>	159 lb (72 kg)

<sup>1</sup>SCF (Standard cubic foot) gas measured at 1 atmosphere and 70°F / Nm<sup>3</sup> (Normal cubic meter) gas measured at 1 atmosphere and 0°C / SLPM (Standard liters per minute) gas measured at 1 atmosphere and 21°C



Note: All dimensions are nominal.

## Ordering Information

Model	Part Number	Description
<b>Centrox<sup>1</sup></b>	AS074-1	120 V ~ ±10%, 60 Hz with oxygen concentration monitor (LED indicator)
	AS074-2	220 V ~ ±10%, 50 Hz with oxygen concentration monitor (LED indicator)
<b>Required Accessories</b>	TA150-1	60 Gallon Oxygen Receiver
	KI046-1	Accessory Kit (10 ft Stainless Braided Oxygen Hose & Primary/Secondary Oxygen Ball Valve Assembly)
	KI470-1	Accessory Kit (10 ft Stainless Braided Oxygen Hose & Regulator Assembly with Flowmeter)
<b>Optional Accessories</b>	KI225-1	Accessory Starter Kit
	TA212-1	Accessory Kit, Mini Oxygen Receiver
	AN021-1	Oxygen Analyzer (Maxtec Handi)
	AN005-1	Oxygen Analyzer (Maxtec Max O <sub>2</sub> Plus)
AN075-1	Oxygen Analyzer/Sensor (Maxtec Max O <sub>2</sub> Plus)	
<b>Shipping Information</b>		
	<b>Centrox</b>	<b>60 Gallon Oxygen Receiver</b>
<b>Class</b>	92.5	70
<b>Commodity Classification Number</b>	8421.39.8040	7311.00.0000
<b>Dimensions (W x D x H)</b>	34 x 52 x 50 in (86 x 132 x 127 cm) with Accessory Kits, Crated	28 x 30 x 56 in (71 x 76 x 142 cm)
<b>Gross Weight</b>	559 lb (254 kg) with Accessory Kits, Crated	177 lb (80 kg)

### Warranty: 1 Year Parts and Factory Labor\*\*\*

\*\*\* An unprotected or inadequately ventilated environment, or improper control power may cause damage to the oxygen generator not covered under warranty. Other exclusions may apply.

<sup>1</sup> Specify oxygen flow and pressure at time of order.

All performance ratings based on an ambient temperature up to 100°F (38°C), up to 1,000 feet elevation, and 80% relative humidity.



**CAIRE**  
Niterra Group

© 2025 AirSep Corporation. All Rights Reserved.  
AirSep reserves the right to discontinue its products, or change the prices, materials, equipment, quality, descriptions, specifications and/or processes to its products at any time without prior notice and with no further obligation or consequence. Any rights expressly stated herein are reserved by us, as applicable.



260 Creekside Drive  
Buffalo, NY 14228-2075 U.S.A.  
Tel: (716) 691-0202 ■ Fax: (716) 691-1255  
www.airsep.com ■ info@airsep.com  
ML-IND0058 B