

Hi, just a reminder that you're receiving this email because you have expressed an interest in CAIRE Inc. Don't forget to add taylor.erwin@chartindustries.com to your address book so we'll be sure to land in your inbox.

You may [unsubscribe](#) if you no longer wish to receive our emails.



CAIRE®

A Chart Industries Company

AirSep®  SeQual®

www.CAIREmedical.com

Med Tips

In This Issue

[Product Information](#)
[Helpful Hints / FAQs](#)
[Service Schools & Tradeshow](#)
[Contact Us](#)

PDF Version

To view Med Tips in PDF, [click here.](#)

Join Our List

[Join Our Mailing List!](#)

April 2013

PRODUCT INFORMATION

AirSep Focus Batteries

The Focus portable oxygen concentrator will ship with two separate batteries (BT023-1). Each battery will provide up to 1.5 hours of runtime when fully charged for a total of 3 hours with two batteries. If the Focus batteries are used with the optional AirBelt (BT017), the Focus will provide up to 7 hours of use.

Removal of VisionAire™ Velcro Wrap

VisionAire concentrators are now being shipped with a velcro cord wrap. Beginning in mid-April, the VisionAire concentrators will no longer include the velcro cord wrap.

CAIRE suggests that the power cord be wrapped midway

CAIRE suggests that the power cord be wrapped midway toward the bottom of the base and fastened with the provided notch in the plug to prevent it from coming undone.

Discontinuation of the SeQual Integra 10 L

CAIRE will discontinue production of the Integra 10 L stationary oxygen concentrator over the course of the next few months. After June 2013, CAIRE will no longer accept Integra orders in favor of the NewLife Intensity concentrators.

The NewLife® Intensity series combines high pressure with high flow to create the most versatile oxygen concentrators with flows up to 8 or 10 liters per minute (LPM), operating on only 410 or 590 watts for reduced power consumption. With an outlet pressure approximately three times higher than most other concentrators, these units are designed to power respiratory accessories including large volume jet nebulizers, venti-masks, medication nebulizers, and long oxygen tubing runs.

The NewLife Intensity oxygen concentrators simplify a tracheostomy set-up by eliminating the need for a separate external compressor. Administer humidified oxygen to a trach patient by connecting a jet neb bottle directly to Intensity's O₂ outlet. NewLife Intensity dual flow units can provide additional power savings by delivering oxygen to two patients simultaneously up to a combined total flow of 8 or 10 LPM with one unit.

With an outlet pressure of 20 psig (138 kPa), and a flow capacity of up to 8 or 10 LPM in a single or dual flow configuration, these units offer the most desirable features and options in today's marketplace. With proven reliability and low operating costs, NewLife Intensity's are the most highly rated units for use in developing countries and tropical climates. NewLife Intensity when combined with the SureFlow Oxygen Flow Station (a flow splitter with 5 flowmeters) can supply the oxygen needs for a pediatric ward in a remote district hospital. All units can be equipped with or without an oxygen monitor to verify concentration.

FEATURES

- High flow concentrators with essential pressure
- Serves special oxygen applications
- Single or dual flow (for two patients)
- Optional flowmeters for pediatric and other low flow applications
- Easy to maintain
- Optional oxygen monitor



HELPFUL HINTS / FAQs

POC: Measuring the Eclipse Oxygen Flow

In order to properly measure the oxygen flow rate from the Eclipse or another oxygen concentrator, an external flow analyzer can be used. There is one important feature to understand when using an external analyzer. In order to accurately measure the oxygen concentration and flow rate exiting a concentrator, the device will need to be **Argon Compensated**.

An oxygen concentrator removes the Nitrogen from ambient air and delivers the remaining air to the patient. The air that is delivered is made up primarily of Oxygen and Argon with negligible amounts of other gases. If an oxygen

analyzer is not calibrated to compensate for the Argon passing through the output gas then the flow rate readings will be incorrect and will read below the published specifications.

An analyzer that is not Argon compensated can still be used to measure correct flow from the Eclipse. The table below outlines the correct Eclipse flow specifications that will be read by a non-Argon compensated flow analyzer.

Eclipse Flow Set Point	Non-Argon Comp. Flow Rate Reading
3.0 LPM	2.74 - 2.83 LPM
0.5 LPM	0.37 - 0.553 LPM

Flow Specifications for Eclipse

Note: These flow readings are for flow meter accurate within 2%. Actual reading may vary with analyzer.

The flowmeter that was tested and recommended for the Eclipse is the Salter Labs PrO2 Check Elite. This has the option to turn Argon compensation on/off to be used with concentrators and other oxygen delivery modalities.

AirSep VisionAire Flow Alarm Testing

Problem: When I test my VisionAire oxygen concentrator for the 6-beep no flow alarm, I do not get an alarm even though the flow meter ball registers zero.

Probable Solution: Please be sure to operate your VisionAire oxygen concentrator for at least 5 minutes prior to any testing. Aside from the startup alarm, alarms in the VisionAire oxygen concentrators are not active during the first 4 minutes of operation to allow the unit to balance.

Note: VisionAire units manufactured with a main circuit board prior to Rev. R are not programmed with the no flow alarm feature.

ACCESSORIES

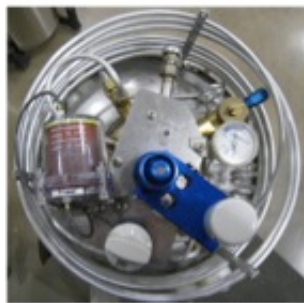
Part Number: Companion Manifold Replacement

Replacement manifolds are available for the Companion Reservoir. However, there have been three different styles of manifold manufactured for this reservoir. Use the information outlined below to ensure that the correct manifold is ordered for your style of Companion.

- **5 Port Manifold**

The Companion reservoir was originally manufactured with a manifold that has five outlets around the perimeter. Each of the outlets connected to a separate plumbing component as outlined below.

- Vent Valve
- Primary Relief Valve
- Secondary Relief Valve
- Economizer Valve
- Warming Coil



Top View of 5-Port



Primary Relief Valve (PRV)



Secondary Relief Valve (SRV)



Economizer Valve

- **3 Port Manifold**

The Companion Reservoir is currently manufactured with three outlets from the perimeter of the manifold. The components attached to these outlets are listed below.

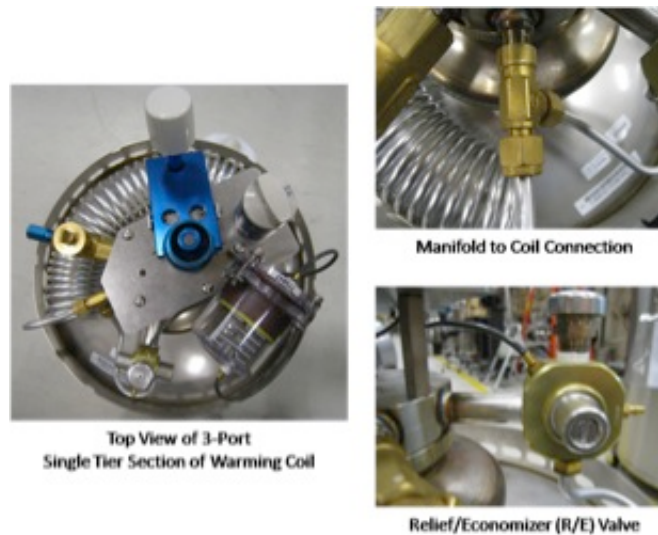
- Economizer/Primary and Secondary Relief Valves
- Vent Valve
- Vaporizer/Breathing Coil

There were two different types of three port manifolds manufactured. The specific differences are below.

- **3 Port Manifold (USA Only - Gen 1)**

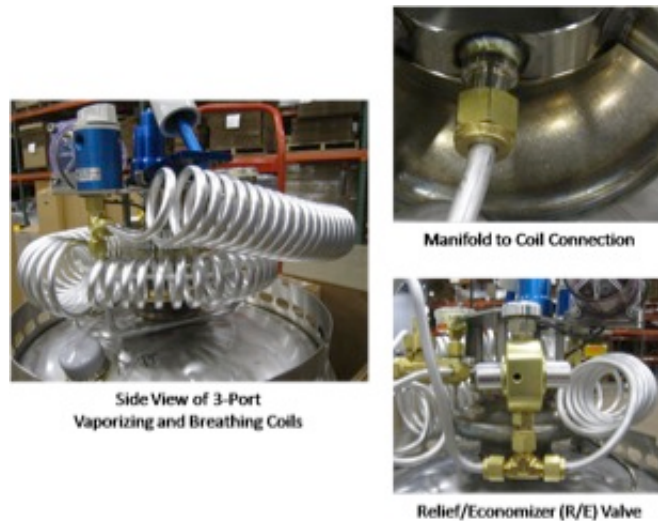
- This manifold was only manufactured in the USA between 2005 and 2011. This particular model has a tee fitting that

connects directly to the warming coil outlet. This will also have a single vaporizer coil as shown in the following images.



- **3 Port Manifold (Currently Sold)**

- The Companion manifold that is currently sold has two separate coils installed. One coil will vaporize the liquid while the other will warm the gas to ambient temperature. This model will also have a tee fitting directly below the Primary/Economizer valve as shown in the following images.

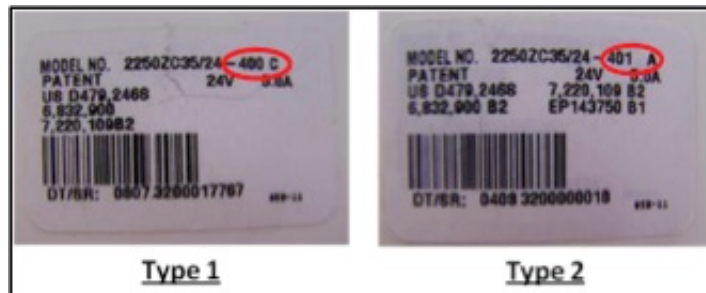


Please utilize the following table to order the correct Companion reservoir replacement manifold.

Model	5 Port Manifold	3 Port Manifold (Gen 1 - USA)	3 Port Manifold (Current)
Companion 21	B-701927-SV	10003453-SV	15092374-SV
Companion 31	B-701928-SV	N/A	15092382-SV
Companion 41	B-701929-SV	10003455-SV	15092391-SV

Part Number: Eclipse Compressor Replacement

The Eclipse compressor assembly can be purchased using **SP5999-SEQ**. This compressor can be used in the Eclipse 1, 2 and 3 concentrators. This replacement is a Type 2 compressor. Before beginning replacement, you will first need to determine if the compressor that you are replacing is Type 1 or Type 2. This can easily be determined by inspecting the labeling on the front of the compressor housing. A compressor with "-400" is a Type 1 while a compressor with "-401" is a Type 2.



If the original compressor that is being replaced is **Type 2**:

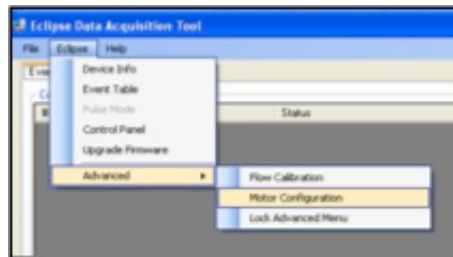
- No configuration is required. The replacement compressor can be installed and the Eclipse is ready for use.

If the original compressor that is being replaced is **Type 1**:

- Configuration of the Eclipse is required. The EDAT software will need to be used to update from a Type 1 compressor to a Type 2.
- Use the following guide to complete the installation.

EDAT Compressor Replacement (Type 1 to Type 2 Upgrade)

1. Check the software version of the Eclipse and upgrade if necessary.
 1. If the software version is 4.2 or lower on the Eclipse 1, or 2.1 or lower on the Eclipse 2 then a software upgrade is required. Use EDAT and a red software upgrade USB key (PN: 5977-5-SEQ) to perform this upgrade. This will update and Eclipse 1 to version 5.0 software and an Eclipse 2 to version 3.0.
 2. If the software version is 5.0 on an Eclipse 1, or 2.3 or higher on the Eclipse 2 then an upgrade is not required.
 3. Install the replacement compressor.
 4. Using EDAT, configure the motor type to **Type 2**. The motor configuration is located in the advanced menu.



NOTE: For specific instructions on how to perform firmware upgrades and motor configuration, please reference the EDAT user's manual provided with the software.

FreeStyle and FreeStyle 5 Backpack

The AirSep backpack accessory (MI284-1) allows the FreeStyle or the FreeStyle 5 oxygen concentrator to be worn by the user as another option for added mobility.



SERVICE SCHOOLS & TRADESHOWS

Mark Your Calendars for our Upcoming 2013 Service Schools!

USA

Concentrator Training: June 4, 5, 6 in Ball Ground, GA

LOX Training: June 11 & 12 in Ball Ground GA

**Ball Ground trainings include a tour of our CAIRE and SeQual manufacturing facility.

Concentrator Training: September 10, 11, 12 in Buffalo, NY

LOX Training: September 17 & 18 in Buffalo NY

**Buffalo trainings include a tour of the manufacturing facility for AirSep products.

Concentrator Training: November 5, 6, 7 in Ball Ground, GA

LOX Training: November 12 & 13 in Ball Ground, GA

**Ball Ground trainings include a tour of our CAIRE and SeQual manufacturing facility.

For additional details and registration information about these trainings, please visit the ["Events & Service Schools"](#) tab of our website.

Europe

English LOX Product Training: April 17 & 18 in Wuppertal, Germany

English LOX Product Training: April 24 & 25 in Wokingham, UK

Italian LOX Product Training: May 8 & 9 in Padova, Italy

English Concentrator Training: May 14, 15, 16 in Wuppertal, Germany

Spanish LOX Product Training: June 5 & 6 in Fonsorbes, France

English Concentrator Training: June 11, 12, 13 in Wokingham, UK

Spanish Concentrator Training: June 25, 26, 27 in Fonsorbes, France

German LOX Product Training: July 3 & 4 in Wuppertal, Germany

French LOX Product Training: September 11 & 12 in Fonsorbes, France

**French Concentrator Training: September 24, 25, 26 in
Fonsorbes, France**
**German Concentrator Training: October 8, 9, 10 in
Wuppertal, Germany**
**Italian LOX Product Training: October 9 & 10 in Padova,
Italy**

To register or request more information on the 2013
European trainings, please contact [Jim Gibson](#).

Tradeshows

This month we will be attending the following tradeshows.
We would love for you to stop by our booth!

MAMES
April 17-19
Omaha, NE

NYMEP
April 22
Albany, NY

Metropolitan DC Thoracic Society
April 22
Glenn Mills, PA

GAMES
April 24
Macon, GA

NW PSRC
April 26
Erie, PA

NRRC
April 28 - April 31
Wisconsin Dells, WI

OHCA Long Term Care Convention
April 29 - May 1
Columbus, OH

CSRC
May 1- May 3

Vail, CO

CONTACT US

For ordering information, contact Customer Service:

United Kingdom	+44 (0) 1189 367060
France	+33 (0) 561 089 858
Germany	+49 (0) 202 739 55420
Italy	+39 049 879 9601
	customerservice.europe@chartindustries.com
Australia/New Zealand	+61 2 9749 4333
	customerservice.australia@chartindustries.com
Asia/Pac Rim	770.721.7759
	csasia@chartindustries.com
The Americas	770.721.7759
US Toll-Free	800.482.2473
	customerservice.usa@chartindustries.com

For technical information, contact Technical Service:

United Kingdom	+44 (0) 1189 367060
France	+33 (0) 561 089 858
Germany	+49 (0) 202 739 55420
Italy	+39 049 879 9160
	techservice.europe@chartindustries.com
Asia/Pac Rim	+61 2 9749 4333
	techservice.asia@chartindustries.com
The Americas	770.721.7759
	techservice.usa@chartindustries.com
US Toll-Free	800.482.2473
	techservice.usa@chartindustries.com

[Forward email](#)

Try it FREE today.

This email was sent to snystrom@sequal.com by taylor.erwin@chartindustries.com | [Update Profile/Email Address](#) | Instant removal with [SafeUnsubscribe™](#) | [Privacy Policy](#).

Chart Industries | 2200 Airport Industrial Dr. | Ste. 500 | Ball Ground | GA | 30107