

Having trouble viewing this email? [Click here](#)

Hi, just a reminder that you're receiving this email because you have expressed an interest in Chart SeQual Technologies Inc. Don't forget to add taylor.erwin@chartindustries.com to your address book so we'll be sure to land in your inbox.

You may [unsubscribe](#) if you no longer wish to receive our emails.



CAIRE®

A Chart Industries Company

AirSep®  SeQual®

www.CAIREmedical.com

Med Tips

In This Issue

[Product Information](#)
[Helpful Hints / FAQs](#)
[Service Schools & Tradeshow](#)
[Contact Us](#)

PDF Version

To view Med Tips in PDF,
[click here.](#)

Join Our List

[Join Our Mailing List!](#)

January 2013

NEW!!

Patient Spotlight

Dear CAIRE,

In a world seemingly obsessed with bad news I want to tell you that your AirSep Focus is wonderful!

During the last week my wife has ventured out shopping on her own for the first time in a very long time; she reports coping easily with her outings and each time has returned home full of praise for the product and without the usual lengthy recovery time once back home. There is no doubt in both of our minds that the most significant factor to her new mobility is the weight of the product - she already says she is unaware of wearing it. From my viewpoint it is wonderful to see her regain her sense of independence.

Mr. Deane Brown

Mrs. Pascoe here;

I add that my good experience continues: jokingly - it is also actually very therapeutic to realize I can do some housework again, which I hope I don't come to regret admitting; and that I venture out more now that I don't need to impose myself on others!

For the future we wish you well and hope the AirSep Company prospers.

Forever grateful,

Mr. & Mrs. Pascoe

A big thank you to Mr. & Mrs. Pascoe for sharing their story with us!

If you know a patient who would be interested in sharing their story, please reply to this email!

PRODUCT INFORMATION

NewLife Intensity™10 Packing Materials

Intensity™10 concentrators are now being shipped with new packaging material inserts. These new inserts will provide sturdier and more secure shipping for the Intensity™10 and reduce the likelihood of potential shipping damage.

The 3-piece foam inserts (shown below) will be made of a higher-density foam material to resist damage. The large insert will be placed under the Intensity™10 and the smaller inserts on the left and right top-sides of the unit.



Newly manufactured Intensity™10 models and units being returned from service will be shipped with the new inserts.

Integra 10™ Oxygen Outlet

The oxygen outlet for all Integra concentrators is a replaceable part. The black elbow and metal DISS fitting assembly can be ordered using part number **#2659-SEQ.**



HELiOS® Marathon Conserver

Effective immediately, there are updated part numbers for ordering the conserver assemblies for the HELiOS portable. Use the part numbers below when ordering these replacement parts:

Conserver Part Numbers	
H300 Plus	B-702132-SV
H850 Marathon	067876-SV

Companion® Reservoir Humidifier Adaptor

Use part number **#B-775314-00** to order the humidifier adaptor for all Companion reservoirs.



This is the elbow that attached to the flow control valve and serves as the oxygen outlet. It contains a DISS outlet. A humidifier bottle can be attached to this elbow, or a cannula can be directly attached using a DISS Adaptor (Christmas Tree) fitting.

Liquid Oxygen Reservoir Shipping Assemblies

Customers frequently inquire about ordering shipping

Customers frequently inquire about ordering shipping material from CAIRE to properly package and ship a reservoir to another location. Below is a list of part numbers used for ordering LOX reservoir shipping materials. The shipping carton assemblies include the box and all necessary inserts and corner posts.

Reservoir	Shipping Carton Assembly
Companion C31	10004081-SV
Companion C41	10004082-SV
HELiOS H36/U36	B-702223-SV
HELiOS H46/U46	B-702189-SV
Liberator 10	13500821
Liberator 20	13500768
Liberator 30	13500776
Liberator 37	13500776
Liberator 45	13500784
Liberator 60	13500813

HELPFUL HINTS / FAQs

VisionAire™ Power Failure Alarm Test

Q: I am performing the power failure alarm test on a VisionAire. I unplugged the unit from the AC power source and left the power switch in the "ON" position. However, the VisionAire does not alarm with one beep as expected. What could be the problem?

A: The audible buzzer on the VisionAire is powered by a capacitor located on the main circuit board. The capacitor may not be charged if the unit has not been operated for an extended period of time.

Operate the VisionAire for a minimum of 5 minutes to recharge the capacitor. Then, repeat the Power Failure Alarm Test.

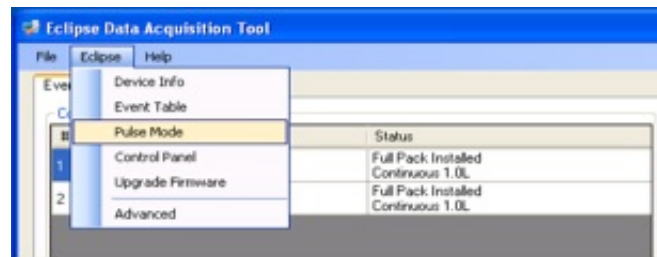


Eclipse™ Pulse Flow Test Mode

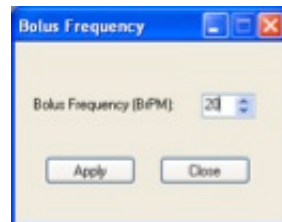
Q: Is there a test mode on the Eclipse that will make the unit automatically pulse on demand settings for testing purposes? I would like to test the concentration and bolus size on pulse mode to verify functionality.

A: Yes. You will need the EDAT software program to enter the pulse flow test mode on the Eclipse.

In the EDAT program select the Eclipse tab and then select the "Pulse Mode" option from the drop-down menu.



This will open the dialog box shown below. Set the Eclipse to pulse mode at the desired flow rate. Next, enter the number of breaths per minute that you would like the Eclipse to pulse at into the text box and then press "Apply".



The Eclipse will now be in pulse flow test mode and will begin to automatically pulse.

EDAT

Q: What is EDAT?

A: EDAT is an acronym for Eclipse Data Acquisition Tool. The EDAT program features include:

- Real-time data displays
- Ability to print and retain historical event logs
- Quick and easy visibility to software revision
- Remote Firmware upgrade capability
- Remote control panel capability

To learn more about this program, or to request ordering information, please contact our Technical Support team.

HELiOS® Marathon Continuous Flow

Q: I have just filled a HELiOS Marathon for use. I turned the flow knob to a setting on C6 to get 6LPM continuous flow. There is not flow coming out of the top cannula barb as expected. What could be the issue with my Marathon?



A: The HELiOS Marathon must detect a breath to begin delivering both demand and continuous flow. No flow will be delivered until a breath is sensed through the bottom cannula barb. A dual-lumen cannula must be connected to the Marathon and a patient must begin breathing before the flow will start.

In the situation described above, the Marathon is behaving normally as long as no cannula has been connected.

Periodic breath detection is also necessary for continuous flow to continue during use. If no breath is detected for a period of time, the continuous flow will stop. This can be caused by a patient removing the cannula, using a single lumen cannula, breathing through their mouth, etc.

ACCESSORIES

FreeStyle™ AirBelt

The FreeStyle AirBelt is used to provide extended battery duration for the AirSep portable concentrators.

The current FreeStyle AirBelt is compatible with the new

FreeStyle 5* and the FreeStyle 3, as well as the Focus portable concentrator. The current model is identified by a grey band around the plug over-mold. The grey band indicates that the AirBelt will work with all of the portable concentrators listed above.

*Note: The new FreeStyle 5 is only available in the US at this time.



Previous models of the AirBelt will not have this grey band identifier. They are only compatible with the FreeStyle 3 and Focus concentrators.

The part numbers below may be used to order a FreeStyle AirBelt:

Electrical Cord	AirBelt Part Number
United States	BT017-1
European	BT017-2
Australian	BT017-3
United Kingdom	BT017-4

Eclipse™ Desktop Charger Operation

The Eclipse desktop charger will fully charge an Eclipse battery in 3 hours. This is ideal for patients who need to charge spare or multiple batteries for use. A desktop charger is ordered using part number **#7112-SEQ.**

The desktop charger contains a single light that indicates its operation status. Below are the light behaviors that may be displayed by the charger.



Light Behavior	Symptom
Flashing Green	Battery is Charging
Solid Green	Battery is Fully Charged
Flashing Yellow	Battery out of temperature range. Too warm or cold to charge.
Flashing Red	Battery Malfunction. Attempt to use another battery.

LOX Reservoir Test Pressure Gauge

CAIRE offers a pressure gauge assembly designed to monitor the pressure of a reservoir during the filling process. This gauge assembly is ordered using part number **#B-701732-00**.

The 0-100 psi gauge comes pre-assembled with tubing and a DISS adaptor fitting. It is designed to be connected to the oxygen outlet of a reservoir while it is being filled.



Attaching the gauge to the oxygen outlet and turning the flow control valve to a setting of 2.0LPM or higher will allow you to monitor the pressure inside the reservoir while filling.

It is critical that the pressure be monitored through the

entire fill to ensure that it is at the appropriate levels. If the pressure during a fill is too high or too low, the reservoir will not function properly and can potentially cause improper functionality of any portables filled off of the reservoir.

SERVICE SCHOOLS & TRADESHOWS

Mark Your Calendars for our Upcoming 2013 Service Schools!

USA

Concentrator Training: February 26, 27, 28 in Denver, CO
LOX Training: March 5 & 6 in Denver, CO

Concentrator Training: June 4, 5, 6 in Ball Ground, GA
LOX Training: June 11 & 12 in Ball Ground GA

**Ball Ground trainings include a tour of our CAIRE and SeQual manufacturing facility.

Concentrator Training: September 10, 11, 12 in Buffalo, NY

LOX Training: September 17 & 18 in Buffalo NY

**Buffalo trainings include a tour of the manufacturing facility for AirSep products.

Concentrator Training: November 5, 6, 7 in Ball Ground, GA

LOX Training: November 12 & 13 in Ball Ground, GA

**Ball Ground trainings include a tour of our CAIRE and SeQual manufacturing facility.

For additional details and registration information about these trainings, please visit the ["Events & Service Schools"](#) tab of our website.

Europe

German LOX Product Training: February 6 & 7 in Wuppertal, Germany

Italian LOX Product Training: February 13 & 14 in Padova, Italy

German Concentrator Training: March 5, 6, 7 in Wuppertal, Germany

French LOX Product Training: March 6 & 7 in Fonsorbes, France

French Concentrator Product Training: March 26, 27, 28 in Fonsorbes, France

English LOX Product Training: April 17 & 18 in Wuppertal, Germany

English LOX Product Training: April 24 & 25 in Wokingham, UK

Italian LOX Product Training: May 8 & 9 in Padova, Italy

English Concentrator Training: May 14, 15, 16 in Wuppertal, Germany

Spanish LOX Product Training: June 5 & 6 in Fonsorbes, France

English Concentrator Training: June 11, 12, 13 in Wokingham, UK

Spanish Concentrator Training: June 25, 26, 27 in Fonsorbes, France

German LOX Product Training: July 3 & 4 in Wuppertal, Germany

French LOX Product Training: September 11 & 12 in Fonsorbes, France

French Concentrator Training: September 24, 25, 26 in Fonsorbes, France

German Concentrator Training: October 8, 9, 10 in Wuppertal, Germany

Italian LOX Product Training: October 9 & 10 in Padova, Italy

To register or request more information on the 2013 European trainings, please contact [Jim Gibson](#).

Tradeshows

This month we will be attending the following tradeshows. We would love for you to stop by our booth!

NEMED Annual Meeting

January 17
Westborough, MA

Arab Health 2013

January 28-31
Dubai, UAE
Booth # 1 H38

AM Society of Respiratory Care

MN Society of Respiratory Care

January 25
St. Paul, MN

GAMES Winter Meeting

January 31
Atlanta, GA

CONTACT US**For ordering information, contact Customer Service:**

United Kingdom	+44 (0) 1189 367060
France	+33 (0) 561 089 858
Germany	+49 (0) 202 739 55420
Italy	+39 049 879 9601
	customerservice.europe@chartindustries.com
Australia/New Zealand	+61 2 9749 4333
Asia/Pac Rim	770.721.7759
	customerservice.australia@chartindustries.com
The Americas	770.721.7759
US Toll-Free	800.482.2473
	customerservice.usa@chartindustries.com

For technical information, contact Technical Service:

United Kingdom	+44 (0) 1189 367060
France	+33 (0) 561 089 858
Germany	+49 (0) 202 739 55420
Italy	+39 049 879 9160
	techservice.europe@chartindustries.com
Asia/Pac Rim	+61 2 9749 4333
	techservice.asia@chartindustries.com
The Americas	770.721.7759
	techservice.usa@chartindustries.com
US Toll-Free	800.482.2473
	techservice.usa@chartindustries.com

[Forward email](#)

Try it FREE today.

This email was sent to snystrom@sequal.com by taylor.erwin@chartindustries.com | [Update Profile/Email Address](#) | Instant removal with [SafeUnsubscribe™](#) | [Privacy Policy](#).

Chart Industries | 2200 Airport Industrial Dr. | Ste. 500 | Ball Ground | GA | 30107