



Q1 2019 CAIRE Med Tips

World Technical Service School 2019

Below are the Service School dates taking place this year:

Training Dates	Type	Language	Location
April 29 - May 1	CONC	English	Ball Ground
May 13-17	CONC/LOX	English	Wokingham
Sept 9-13	CONC/LOX	English	Ball Ground
April 8-9	LOX	French	Toulouse
April 10-12	CONC	French	Toulouse
March 5-6	LOX	German	Wuppertal
June 4-6	CONC	German	Wuppertal
Sept 24-25	LOX	German	Wuppertal
March 20-21	LOX	Italian	Padova
June 12-14	CONC	Italian	Padova
Oct 23-24	LOX	Italian	Padova

We would like to remind you that spaces are limited.

If you wish to attend, please contact Tech Service to make the booking.

Email address for USA request: TechService.global@chartindustries.com

Email address for Europe request: Jim.Gibson@chartindustries.com



Periodic inspections for European CAIRE Liquid Oxygen Reservoirs and Portables

The ADR (European Agreement Concerning the International Carriage of Dangerous Goods by Road) and regulation EN1251-3 (Cryogenic vessels – Transportable vacuum insulated vessels of not more than 1000 litres) require that periodic inspections are performed on closed cryogenic vessels every five and 10 years. All CAIRE Liquid Oxygen Reservoirs and Portables fall under these requirements.

Chart European facilities in UK, Germany and Italy are fully accredited to perform the required inspections and also offer a further TPED accreditation service. Please contact customer service for further information.

CAIRE Liquid Oxygen Reservoirs and Portables manufactured since **January 2014 (5-year test) and January 2009 (10-year test)** are due for inspections. The manufacture date of your equipment can be identified on the vessel's data plate.

All CAIRE Liquid Oxygen Reservoirs and Portables *located within the European Union* fall under these requirements.

CAIRE LOX products IEC 60601-1-2 4th Edition

All currently manufactured CAIRE LOX products with electronic liquid level gauges are IEC 60601-1-2 3rd Edition compliant. Please see table below for complete list of current models. Note: products that do not have an electronic liquid level gauge are not required to be compliant with IEC 60601-1-2.

Reservoirs				
Liberator [®] 20	Liberator [®] 30	Liberator [®] 37	Liberator [®] 45	Liberator [®] 60
HELIOS [™] H36	HELIOS [™] H46	HELIOS [™] U36	HELIOS [™] U46	
Portables				
Spirit [™] 300	Spirit [™] 600	Spirit [™] 1200		
Sprint [™]	Stroller [®]	Hi Flow Stroller [®]		

The above mentioned CAIRE LOX products will be IEC 60601-1-2 4th Edition compliant in anticipation of the 4th edition which will be required in Europe as of Jan 1st, 2019, with the exception of the HELIOS[™] Reservoir product lines will have already been or will be discontinued by that time.

Please reference service bulletin part number: 21297437



CAIRE concentrators products IEC 60601-1-2 4th Edition

The concentrator models below currently being manufactured are compliant to IEC 60601-1-2 Electromagnetic disturbances 4th Edition:

VisionAire™ 5 (230 VAC models only)

NewLife® Elite and Intensity 10

Eclipse 5® (two LED models only)

FreeStyle® Comfort®

Please reference service bulletin part number: 21303735

CAIRE Certification Program

The two-year CAIRE Certification Program and flat rate (offered in the US) is no longer applicable to the Eclipse® 3 model; which is no longer being manufactured.

Additionally, CAIRE is no longer offering flat rate or CAIRE Certification repairs for the Intensity 8, and VisionAire™ 2, 3, or 5 models effective June 2018.

The following concentrator will no longer be offered for flat rate or CAIRE Certification after the dates listed below:

Focus™ 3/31/2019

The concentrator models that will continue to have the Flat Rate Repair Program w/one-year warranty offered are:

NewLife® Elite (three LED)

NewLife® Intensity (three LED)

The concentrator model that will continue to have the CAIRE Certification Program w/two-year warranty offered is:

Eclipse 5® (two LED)

For information see bulletins below :

Please reference the following service bulletins:

Part number: 21250054

Part number: 21250593

Part number: 21250053

Part number: 21347782

Part number: 21288973

Part number: 21307249

Aluminum outlet barb for the Spirit™

The previous plastic Spirit™ outlet barb has been replaced by a more robust aluminum outlet barb. Newly manufactured units as well as spare OCD assemblies that are purchased going forward will be equipped with this newer style barb. The newer style aluminum outlet barb is item 21328868 (pictured here).





Proper use of the SeQual Eclipse 5® AC power supply

This bulletin will serve as a reminder for the proper procedures in using the new two prong power supply for the Eclipse 5®. Along with this bulletin, you may also reference pages 5 and 14 of the Eclipse 5® User Manual (CAIRE PN: 21182453).

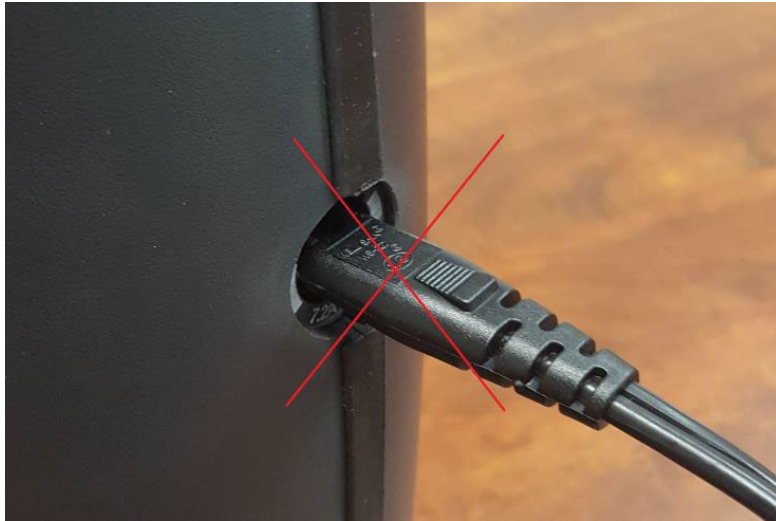
Step 1: Insert the AC power supply cord securely into the external power receptacle on the right side of the device.



Step 2: If your power supply has three pins, plug the AC power cord into a grounded AC outlet. If your supply has a two-pin plug, plug the AC cord into a grounded or non-grounded AC outlet.



NOTE: The AC power cord cannot plug directly into Power Receptacle on side of the Eclipse 5®. Doing so will damage the unit.



Please reference service bulletin part number: 21336031

Companion 5™ hose clamp change

Effective Dec. 17th, 2018, all CAIRE Companion 5™ stationary oxygen concentrators are now being manufactured using new hose clamps (CAIRE PN CL036-1 and 20835811). The new ratcheting clamp (PN CL036-1) is meant to be taken on and off for service and can be reused. The pinch clamp (CAIRE PN 20835811) does not need to be removed for service and if needed to, it will need to be replaced. The previous design clamps required special pliers (CAIRE PN 20852060) to remove for service work. See bulletin below for updated part numbers and pictures.

Please reference service bulletin part number: 21360547

VisionAire™ stationary oxygen concentrators

CAIRE is ceasing commercial activity of select models of VisionAire™ stationary oxygen concentrators. The most common VisionAire™ models will still be available going forward.

Manufacturing of select models of VisionAire™ concentrators documented in the bulletin below cease globally on December 31, 2018, to simplify the CAIRE Inc. product offerings and provide a more streamlined order and delivery process for our customers. CAIRE will continue to provide service and parts through 2021 to support warranty obligations.

Please reference service bulletin part number: 21353847

NewLife® Elite, Intensity 10 and VisionAire™ 5: IEC 80601-2-69 oxygen concentrator particular standard compliance

To ensure NewLife® Elite, Intensity 10 and VisionAire™ oxygen concentrators are compliant with IEC 60601-1 3.1, select models will have new alarm conditions, new alarm lights, and labels. As part of the product update, both VisionAire™ and NewLife® units will have identical alarm conditions going forward on newly manufactured units. These devices will now be IEC 60529 IP21 rather than IPX1. This change will be accompanied by revised alarm label, new circuit board part number, and an updated alarm code troubleshooting tables. Only the model numbers listed in the table below will continue to bear the CE



mark on newly produced units and these will be the only models to be compliant to the latest 60601 standard.

See bulletin 21288973 for details on discontinued NewLife® models and their replacement model numbers.

Previously manufactured units built without these new alarms and labels are not required to be updated to the new standard.

Model	Voltage	Plug Type	Beginning Serial Number
NewLife® Intensity 10			
AS099-110	120V, 60Hz	IEC Type A, Domestic	CBB0118340001
AS099-103	230V, 50Hz	IEC Type F, mainland Europe	CBB0118080334
AS099-210	230V, 50Hz	IEC Type G, UK, Saudi Arabia, etc.	N/A
NewLife® Elite			
AS005-4	120V, 60Hz	IEC Type A, Domestic	CBB0118420228
AS005-244	230V, 50Hz	IEC Type I, Argentina	CBB0118430021
AS005-270	230V, 50Hz	IEC Type G, UK, Saudi Arabia, etc.	CBB0118480080
AS005-550	230V, 50Hz	IEC Type F, mainland Europe	N/A
AS005-555	230V, 50Hz	IEC Type F, mainland Europe	CBB0118440001
VisionAire™			
AS098-5	230V, 50Hz	IEC Type F, mainland Europe	GPB0118050001
AS098-7	230V, 50Hz	IEC Type G, UK, Saudi Arabia, Etc.	GPB0119030001
AS098-15	230V, 50Hz	IEC Type F, mainland Europe	N/A

Please reference service bulletin part number: 21220076



NewLife® 5 L and 10 L main circuit board retrofit instructions

This instruction is intended to guide technicians through replacing circuit board item CB154 / CB160 (or older circuit boards) with circuit board CB200. Other modifications will be required to install CB200 on previous design units, including updated wiring harness, alarm buzzer, and O2 monitor board (for units originally equipped with the O2 monitor option). There are two procedures listed below for you to upgrade the NewLife® with the 60601 compliant board. Procedure A specifies how to upgrade the board and components with one LED light or non-oxygen monitor concentrators. Procedure B will instruct the operator how to upgrade the concentrator to the current 60601 compliant standard for the three LED oxygen monitor concentrators.

Kit Part Number	Main Board Included in Kit	Model
KI608-4	CB200-4	NewLife® 5L (230 V, 50 Hz)
KI608-3	CB200-3	NewLife® 5L (120 V, 60 Hz)
KI608-2	CB200-2	NewLife® 10L (230 V, 50 Hz)
KI608-1	CB200-1	NewLife® 10L (120 V, 60 Hz)

Please reference service bulletin part number: 21329212

Discontinuation and end of service life of the SeQual® eQuinox™ and the SeQual® Oxywell

CAIRE announces the discontinuation of the SeQual® Oxywell as of September 31, 2017, and the SeQual® eQuinox™ as of December 31, 2018. Effective December 31, 2021, CAIRE will no longer offer service options for the SeQual® eQuinox™, and September 31, 2022, for the SeQual® Oxywell. CAIRE will begin phasing out production by yearend but will have a limited number of units available to support current customer orders and their phase-out plans on first-come, first-served basis. The company will cease producing any new units once this supply is exhausted. CAIRE will continue to provide service and parts for the SeQual® eQuinox™ through 2021 to support its warranty obligations for the existing fleet. The SeQual® Oxywell was discontinued in September 2017, CAIRE will continue to provide service and parts for the SeQual® Oxywell until September 31, 2022.

See Service bulletin for affected part numbers

Please reference service bulletin part number: 21326625

AirSep® NewLife® Intensity 10 L and AirSep® NewLife® Elite 5 L concentrators

CAIRE is discontinuing select models of AirSep® NewLife® Intensity 10L and AirSep® NewLife® Elite 5L. The most common NewLife® models will still be available going forward.

Manufacturing of select models of AirSep® NewLife® Intensity 10 L and AirSep® New Life® Elite 5 L concentrators documented in the tables within the attached bulletin ceased globally on December 31, 2018, to simplify the CAIRE Inc. product offerings and provide a more streamlined order and delivery process for our customers. CAIRE will continue to provide service and parts through 2021 to support warranty obligations.



Note: Models previously manufactured without the O2 monitor feature will instead have the O2 monitor installed on any newly manufactured units going forward.

Please reference service bulletin part number: 21288973

Discontinuation and end of service life of three LED Eclipse 5®

As of October 1, 2018, CAIRE announces the discontinuation of the Eclipse 5® oxygen concentrator with the three LED control panel display. Effective October 1, 2021 CAIRE will no longer offer service options for the Eclipse 5® that has the three LED display. The three LED Eclipse 5® is being replaced with the two LED Eclipse 5® oxygen concentrator with wireless capabilities. See the table below for the affected part numbers. Reference Service Bulletin 21220048 for more details on the changes for the three LED model and two LED model Eclipse 5®.

Previous Item Number	Description	Change	New Part Number	First SN
6900-SEQ	E5 SYS, ENG, 110, NA CORD	Two LED Control Panel Display	6900BT-SEQ	GPB0918050151
6900LN-SEQ	E5 SYS ENG 110 NA CORD 2 BATTERIES	Two LED Control Panel Display	6900LN-SEQ	TBD
6900-C1-SEQ	E5 SYS, C1 EN, FR, GE, SP, IT, PO, DU	Two LED Control Panel Display	6900-C1-SEQ	GPB0918050186
6900-C2-SEQ	E5 SYS, C2 DA, NO, SW, FI	Two LED Control Panel Display	6900-C2-SEQ	TBD
6900-08-SEQ	E5 SYS, UK	Two LED Control Panel Display	6900-08-SEQ	TBD

Please reference service bulletin part number: 21307249

Discontinuation of Companion® C31/C41 oxygen reservoirs and Companion® C1000/C1000T portables

The Companion® C31/C41 reservoirs and C1000/C1000T portables are obsolete as of December 31, 2018. These LOX Products are made obsolete due to low sales volume and due to the redundancy with the newly enhanced Liberator® reservoir product line.



For stationary oxygen reservoirs, customers can use the Liberator® reservoirs which are available in a wide variety of sizes and have the benefit of allowing flow rates up to 15 LPM. The C1000/C1000T portables will be replaced by the Stroller/High Flow Stroller® models giving customers the added option of being able to choose our side fill systems.

CAIRE will provide parts and service for the Companion C31/C41 oxygen reservoirs and Companion® C1000/C1000T until December 31, 2023. After this date CAIRE may continue to provide parts and service at the company's discretion.

Please reference service bulletin part number: 21285171

CAIRE will cease commercial activity of the AirSep® Focus™ portable oxygen concentrator in select markets

Manufacturing of the AirSep® Focus™ portable oxygen concentrator will cease globally on December 31, 2019, as CAIRE focuses their portable concentrator sales and development efforts on their newest generation portable oxygen concentrator platform. Until the end of service life dates below, current service and parts needs will still be fulfilled. The last order dates are listed below for different geographic regions and this indicates the last date that CAIRE will accept orders and the last day that CAIRE will ship orders for this product.

CAIRE will no longer be offering service parts or repairs after the end of service life dates below. Parts and service will be available for units still within the warranty period, and parts and service may continue to be available beyond the end of service life date at CAIRE's discretion.

Region	Last Order Date	Last Shipment Date	End of Service Life Date
North America	2/28/19	3/31/19	3/31/22
Latin America	2/28/19	3/31/19	3/31/22
Europe (CE Countries)	N/A	12/31/17	12/31/20
Europe (Non-CE Countries)	2/28/19	3/31/19	3/31/22
Asia/Pacific	2/28/19	3/31/19	3/31/22
China	11/1/19	12/31/19	12/31/22

Table 1. Last Order Date and End Service Life Date for AirSep® Focus™

Please reference service bulletin part number: 21347782



AirSep® plastic case color changes

Effective April 2015 all VisionAire™, NewLife® units are manufactured with new plastic cases. This change will alter the color of the plastic housing for each unit. The new plastic will be a medium gray color as shown below. This is several shades darker for the NewLife® products, and a slightly lighter shade for the VisionAire™ products. Not only the dark gray color give a cleaner visual appearance, the plastic housing is more durable and robust.

The new color “Medium Gray” is PANTONE 425 C



Examples of new Medium Gray Color:





NEWLIFE PANELS			
Light Gray , Old NewLife	Medium Gray, Current Color	Dark Gray , Old VisionAire	Description
CA034-1	CA034-11	N/A	CABINET ASSY, BACK PANEL,NEWLIFE
CA035-7S	CA035-17S	N/A	CABINET, ASSY, FRONT PANEL, ELITE
CA036-4	CA036-14	N/A	CABINET, ASSY, SIDE PANEL, SPARE
CA218-1S	CA218-11S	N/A	CABINET,8L, ASSY, FRONT PANEL,
CA254-1S	CA254-11S	N/A	CABINET,10L, ASSY, FRONT PANEL
CA266-2S	CA266-12S	N/A	CABINET, ASSY, ROLLER BASE, 220V
CA005-1	CA005-11	N/A	CABINET, FRONT PANEL
CA003-1	CA003-11	N/A	CABINET, CONTROL PANEL, NO OUTLET HOLE
CA006-1	CA006-11	N/A	CABINET,SIDE PANEL, FR
CA002-1	CA002-11	N/A	CABINET,BACK PANEL, FR
CA005-1	CA005-11	N/A	CABINET, FRONT PANEL
CA003-1	CA003-11	N/A	CABINET, CONTROL PANEL, NO OUTLET HOLE
CA006-1	CA006-11	N/A	CABINET,SIDE PANEL, FR
CA002-1	CA002-11	N/A	CABINET,BACK PANEL, FR

VISIONAIRE PANELS			
Light Gray , Old NewLife	Medium Gray, Current Color	Dark Gray , Old VisionAire	Description
N/A	CA265-12S	CA265-2S	CABINET, ASSEMBLY, BACK PANEL
N/A	CA266-11S	CA266-1S	CABINET, ASSY, ROLLER BASE,115V
N/A	CA280-11S	CA280-1S	CABINET, VA, ASSY, FRONT PANEL
N/A	CA280-12S	CA280-2S	CABINET, VA, ASSY, FRONT PANEL, O2
N/A	CA282-11	CA282-1	CABINET, ASSEMBLY, SHELL, VISIONAIRE
N/A	CA285-11S	CA285-1S	CABINET,3L, ASSY, FRONT PANEL, VISIONAIRE 3
N/A	CA285-12S	CA285-2S	CABINET,3L, ASSY, FRONT PANEL, O2, V3
N/A	CA285-13S	CA285-3S	CABINET, ASSY, FRONT PANEL, O2, VISIONAIRE 2
N/A	CA268-11	CA268-1	CABINET,SUB-ASSY,ROLLER BASE
N/A	CA283-11	CA283-1	CABINET,CENTER SECTION,SERVICE



Helpful Hints and FAQs

Filling issues

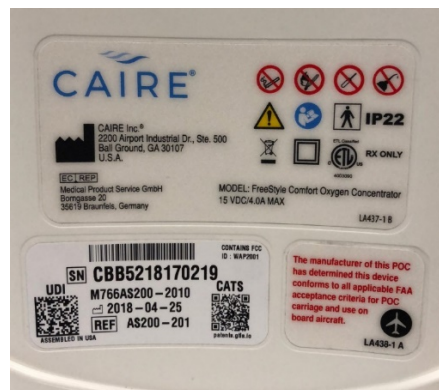
CAIRE® would like to remind our valued customers that prior to filling any of our liquid oxygen reservoirs and portables that it is of utmost importance to wipe the fill connectors prior to commencing the fill. This is clearly detailed in our user manuals and will ensure that the fill connectors are clean and moisture free. Failure to follow this instruction may lead to issues with the equipment's such as fill connectors sticking/freezing together or even fill connectors not closing correctly after the fill. When carrying out this procedure be sure to use a lint free cloth.



Photos show typical fill connectors on Companion® and HELIOS™ equipment's

FAA Approval

As of August 22, 2016, the FAA requires portable oxygen concentrator manufacturers to perform a self-certification and any POCs released after that date will no longer get added to the oxygen concentrator list on the FAA website. This is applicable to all POC manufacturers and not just CAIRE. The new FreeStyle® Comfort® portable oxygen concentrator meets FAA guidelines for commercial air flights, and bears the symbol on the back label of the device

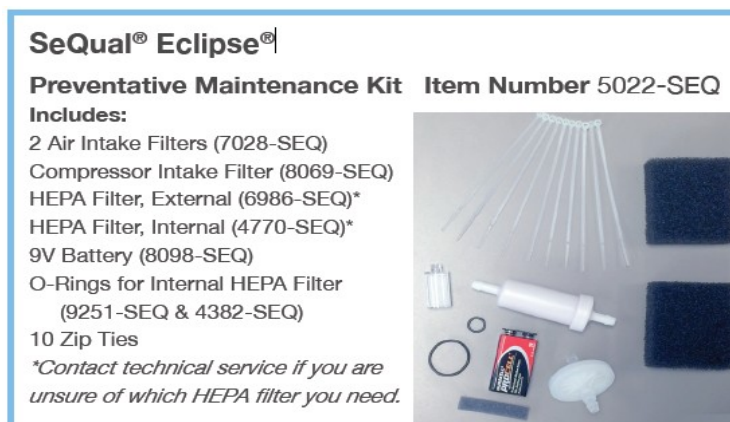


SeQual® Travel Power Adapter

The SeQual® Eclipse® and eQuinox™ power supplies are rated for universal voltages but require various power cords depending on the location. Using the Travel Power Adapter will keep you from having to carry different cords for the country you're visiting.



Eclipse 5® Preventative Maintenance Kit part numbers



Part number 5022-SEQ, shown above, will include all the replacement parts needed to perform preventative maintenance on Eclipse® units. The kit includes two different product filters. This allows it to be compatible with Eclipse® units produced with the HEPA filter internal to the product tank and also units with the disk type HEPA filter external to the product tank.



AirSep® NewLife® filters



CONTACT:

For technical questions or concerns, contact Technical Service:

USA: 800-482-2473

www.cairemedical.com/provider

Europe: +44 (0) 118 936 7060

www.cairemedical.com/provider

For ordering information or general inquiries, contact Customer Service:

USA: 800-482-2473

www.cairemedical.com/provider

Europe: +44 (0) 118 936 7060

www.cairemedical.com/provider

© Copyright 2019 CAIRE Inc. All Rights Reserved.

CAIRE reserves the right to discontinue its products, or change the prices, materials, equipment, quality, descriptions, specifications and/or processes to its products at any time without prior notice and with no further obligation or consequence. All rights not expressly stated herein are reserved by us, as applicable.

Please consult the applicable product instructions for use for product indications, contraindications, warnings, precautions, and detailed safety information.



SERVICE BULLETIN

PN: 21347782

RELEASE DATE: 1/02/2019

REVISION DATE: 1/08/2019

MODEL: AirSep® FOCUS Portable Oxygen Concentrator

ISSUE: Cease commercial activity of the AirSep® FOCUS Portable Oxygen Concentrator in select markets.

NOTES: Manufacturing of the AirSep® FOCUS Portable Oxygen Concentrator will cease globally on December 31, 2019 as CAIRE focuses their portable concentrator sales and development efforts on their newest generation portable oxygen concentrator platform. Until the end of service life dates below, current service and parts needs will still be fulfilled. The last order dates are listed below for different geographic regions and this indicates the last date that CAIRE will accept orders and the last day that CAIRE will ship orders for this product.

CAIRE will no longer be offering service parts or repairs after the end of service life dates below. Parts and service will be available for units still within the warranty period, and parts and service may continue to be available beyond the end of service life date at CAIRE's discretion.

Region	Last Order Date	Last Shipment Date	End of Service Life Date
North America	2/28/19	3/31/19	3/31/22
Latin America	2/28/19	3/31/19	3/31/22
Europe (CE Countries)	N/A	12/31/17	12/31/20
Europe (Non CE Countries)	2/28/19	3/31/19	3/31/22
Asia/Pacific	2/28/19	3/31/19	3/31/22
China	11/1/19	12/31/19	12/31/22

Table 1. Last Order Date and End Service Life Date for AirSep® FOCUS

CONTACT:

For technical questions or concerns, contact Technical Service:

USA: 800-482-2473

www.cairemedical.com

Europe: +44 (0) 1199367060

www.cairemedical.com

For ordering information or general inquiries, contact Customer Service:

USA: 800-482-2473

www.cairemedical.com

Europe: +44 (0) 1199367060

www.cairemedical.com

Copyright © 2018 CAIRE Inc. CAIRE Inc. reserves the right to discontinue its products, or change the prices, materials, equipment, quality, descriptions, specifications and/or processes to its products at any time without prior notice and with no further obligation or consequence. All rights not expressly stated herein are reserved by us, as applicable.



SERVICE BULLETIN

PN: 21220076

RELEASE DATE: 10/31/2017

REVISED DATE: 3/12/2018 (Rev B), 10/18/2018 (Rev C)

MODEL: NewLife Elite, Intensity 10 and VisionAire 5

ISSUE: IEC 80601-2-69 Oxygen Concentrator Particular Standard Compliance

NOTES: To ensure NewLife Elite, Intensity 10 and VisionAire oxygen concentrators are compliant with IEC 60601-1 3.1, select models will have new alarm conditions, new alarm lights, and labels. As part of the product update, both VisionAire and NewLife units will have identical alarm conditions going forward on newly manufactured units. These devices will now be IEC 60529 IP21 rather than IPX1. This change will be accompanied by revised alarm label, new circuit board part number, and an updated alarm code troubleshooting tables. Only the model numbers listed in the table below will continue to bear the CE mark on newly produced units and these will be the only models to be compliant to the latest 60601 standard.

See bulletin 21288973 for details on discontinued NewLife models and their replacement model numbers.

Previously manufactured units built without these new alarms and labels are not required to be updated to the new standard.

Model	Voltage	Plug Type	Beginning Serial Number
NewLife Intensity 10			
AS099-103	230V, 50Hz	IEC Type F, mainland Europe	CBB0118080334
AS099-210	230V, 50Hz	IEC Type G, UK, Saudi Arabia, etc.	N/A
NewLife Elite			
AS005-4	120V, 60Hz	IEC Type A, Domestic	CBB0118420228
AS005-270	230V, 50Hz	IEC Type G, UK, Saudi Arabia, etc.	CBB0118480080
AS005-550	230V, 50Hz	IEC Type F, mainland Europe	N/A
AS005-555	230V, 50Hz	IEC Type F, mainland Europe	CBB0118440001
VisionAire			
AS098-5	230V, 50Hz	IEC Type F, mainland Europe	GPB0118050001
AS098-7	230V, 50Hz	IEC Type G, UK, Saudi Arabia, Etc.	N/A
AS098-15	230V, 50Hz	IEC Type F, mainland Europe	N/A

Previous VisionAire Alarm Panel



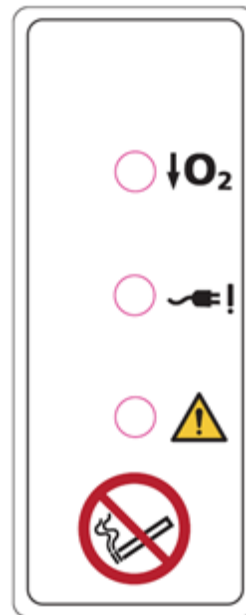
Updated VisionAire Alarm Panel



Previous NewLife Alarm Panel



Updated NewLife Alarm Panel




Major changes on updated design NewLife

- Additional alarm lights than previous model
- Updated warning symbols on label
- New Circuit board (no more alarm or solenoid LED lights on board)
- Ferrite clamp on wiring to the LED lights
- Heat shrink tubing on the circuit breaker, power switch and hour meter
- Uses same O2 monitor circuit board as the VisionAire now.

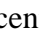
Major changes on updated design VisionAire


- Additional alarm lights than previous model
- Updated warning symbols on label
- New plastic switch cover for button panel
- New circuit board
- New cover over circuit board
- Ferrite ring for incoming AC power
- Heat shrink tubing on the circuit breaker, power switch, and hour meter

Updated Alarm Conditions for both VisionAire and NewLife

General Malfunction: If any of the conditions listed below occurs, the general light () will illuminate and an audible intermittent alarm will activate. This includes:

- Obstruction to the flow of oxygen such as a pinch or kink in the delivery cannula, triggered by high product tank pressure
- High device product tank pressure condition of greater than 33 psig (+/-1)
- Low device product tank pressure condition of less than 5 psig (+/-1)
- High device temperature of greater than 135°C (275°F), triggered by low product tank pressure if the thermal switch located within the compressor trips (shutting down the compressor)

Oxygen Monitor: The oxygen monitor detects any drop in concentration below 82%. If this occurs, the low oxygen concentration warning light () will illuminate. If the low O2 condition persists, an audible intermittent alarm will also activate in addition to the light.

Power Failure: In the event the unit is operation and a loss of power occurs, the power warning light () will illuminate and an audible intermittent alarm will activate.

CONTACT: For technical questions or concerns, contact Technical Service:

USA: 800-482-2473
www.cairemedical.com

Europe: +44 1344 403100
www.cairemedical.com

For ordering information or general inquires, contact Customer Service:

USA: 800-482-2473
www.cairemedical.com

Europe: +44 1344 403100
www.cairemedical.com

Copyright © 2018 CAIRE Inc. CAIRE Inc. reserves the right to discontinue its products, or change the prices, materials, equipment, quality, descriptions, specifications and/or processes to its products at any time without prior notice and with no further obligation or consequence. All rights not expressly stated herein are reserved by us, as applicable.



Innovation. Experience. Performance.®

SERVICE BULLETIN

PN: 21250053

DATE: 3/14/2018

MODEL: NewLife Intensity 8 Oxygen Concentrator

ISSUE: Intensity 8 Discontinuation and End of Service Life

NOTES: CAIRE will discontinue sales of the AirSep® NewLife® Intensity 8 concentrator globally on July 31, 2018. Please make note of the following dates:

- The last day CAIRE will take orders for all models is March 31, 2018.
- All orders are final and will be shipped per order instructions.
- All orders must be placed prior to March 31, 2018.

CAIRE has identified product redundancy with its NewLife® Intensity 10 LPM and the NewLife® Intensity 8 LPM concentrators as these products serve the same high flow patient base and have similar design, features, and benefits. CAIRE will focus its high flow concentrator manufacturing on the NewLife® Intensity 10 concentrator because it allows a greater prescription base to be covered with a single product and will help CAIRE customers by helping standardize their inventory.

The NewLife® Intensity 10 will continue to be available globally and we will continue to support existing the NewLife® Intensity 8 products until March 31, 2023.

The NewLife® Intensity 10 uses a time-proven, reliable design to provide 2-10 LPM of high flow oxygen. The market-leading 20 psi (137.9 kPa) output pressure is more than double any other high flow concentrator, and allows for use with specialized, high-pressure applications. Also, oxygen monitor equipped single flow and dual flow units that can serve two patients will be available.

See below a list of items numbers will not be available for order after March 31, 2018.

The following items numbers will not be available for order after March 31, 2018.

<u>8L Item Number</u>	<u>8L Description</u>
AS094-1	AIR SEP,8L,120V,60HZ,
AS094-4	AIRSEP,8L,120V,60HZ,O2 MONITOR
AS094-10	AIRSEP,8L,230V,50HZ,O2 MONITOR
AS094-100	AIRSEP,8L,SINGLE,120V,60HZ
AS094-101	AIRSEP,8L,SINGLE,120V,60HZ,O2
AS094-102	AIRSEP,8L,SINGLE,230V,50HZ,
AS094-103	AIRSEP,8L,SINGLE,230V,50HZ,O2
AS094-104	AIRSEP,8L,SINGLE,230V,60HZ,
AS094-105	AIRSEP,8L,SINGLE,230V,60HZ,O2
AS094-7	AIRSEP,8L,230V,50HZ,
AS094-1U	AIR SEP,8L,120V/60HZ,RE-MFG
AS094-4U	AIR SEP,8L,120V,60HZ,RE-MFG
AS094-100U	AIR SEP,8L,120V/60HZ,RE-MFG
AS094-100M	AIRSEP,8L,120V 60HZ,O2 MONITOR
AS094-101U	AIRSEP,8L,120V/60HZ,RE-MFG
AS094-101M	AIRSEP,8L,SINGLE,120V,60HZ,O2R
AS094-103U	AIRSEP,8L,230V,50HZ,O2
AS094-103CORE	AIRSEP,8L,230V,50HZ,O2 MON,
AS094-103AP	AIRSEP,8L,SINGLE,230V,50HZ,A/P
AS094-4M	AIRSEP,8L,120V 60HZ,O2 MONITOR

CONTACT: For technical questions or concerns, contact Technical Service:

USA: 800-482-2473

techservice.usa@chartindustries.com

Europe: +44 1344 403100

technicalservice.europe@chartindustries.com

For ordering information or general inquires, contact Customer Service:

USA: 800-482-2473 customerservice.usa@chart-ind.com

Europe: +44 1344 403100 ustomerservice.europe@chartind.com



Innovation. Experience. Performance.®

SERVICE BULLETIN

PN: 21250054

DATE: 4/18/2018

MODEL: Eclipse 2, Eclipse 3 Oxygen Concentrators

ISSUE: Eclipse 2 End of Service Life and Eclipse 3 Discontinuation/End of Service Life

NOTES: Effective immediately, CAIRE will no longer be offering service options for the Eclipse 2 Oxygen Concentrator. This includes internal service offerings, as well as service components. The Eclipse 2 does share the same compressor (PN: SP5999-SEQ) and ATF assembly (PN: SP20626702) as the current model, the Eclipse 5. Limited Eclipse 2 specific components will be available until inventory has been depleted.

Effective August 31, 2020, CAIRE will no longer be offering service options for the Eclipse 3 Oxygen Concentrator. The Eclipse 3 was discontinued in August 2013, and replaced by the current model, the Eclipse 5. Parts and service will be available for units still within the warranty period, and parts and service will continue to be available at Chart's discretion.

The French version Eclipse 3 (PN: 5901-SEQ) was discontinued December 2017, and the End of Service Life will be December 31, 2022.

CONTACT: For technical questions or concerns, contact Technical Service:

USA: 800-482-2473
techservice.usa@chartindustries.com

Europe: +44 1344 403100
technicalservice.europe@chartindustries.com

For ordering information or general inquires, contact Customer Service:

USA: 800-482-2473 customerservice.usa@chart-ind.com
Europe: +44 1344 403100 ustomerservice.europe@chartind.com



Innovation. Experience. Performance. ®

SERVICE BULLETIN

PN: 21250593

DATE: 3/16/2018

MODEL: VisionAire 2, VisionAire 3 Oxygen Concentrators

ISSUE: VisionAire 2 Discontinuation/End of Service Life and VisionAire 3 Discontinuation/End of Service Life

NOTES: Effective September 30, 2020, CAIRE will no longer be offering service options for the VisionAire 2 Oxygen Concentrator. The VisionAire 2 was discontinued in September 2017. Parts and service will be available for units still within the warranty period, and parts and service will continue to be available at Chart's discretion. To replace the VisionAire 2, there are two options: SureFlow or an Intensity 10 Dual Flow with a pediatric flowmeter. The SureFlow can be used in combination with a VisionAire 5, Companion 5, or NewLife Series to provide low flow delivery via wall-mounting or sitting on a table. For 2 LPM flowmeters - FM069-2. The Intensity 10 - AS099-4 can be retrofitted with a pediatric flowmeter - FM001-2, this pediatric flowmeter is 2 LPM with 1/8th increments.

Effective April 30, 2022, CAIRE will no longer be offering service options for the VisionAire 3 Oxygen Concentrator. The VisionAire 3 was discontinued in April 2017. Parts and service will be available for units still within the warranty period, and parts and service will continue to be available at Chart's discretion. To replace the VisionAire 3 CAIRE offers the 5 LPM oxygen concentrators: VisionAire 5 - AS098-4, NewLife Elite - AS005-4, or Companion 5 - 15067005.

CONTACT: For technical questions or concerns, contact Technical Service:

USA: 800-482-2473

techservice.usa@chartindustries.com

Europe: +44 (0) 118 936 7060

technicalservice.europe@chartindustries.com

For ordering information or general inquiries, contact Customer Service:

USA: 800-482-2473

customerservice.usa@chart-ind.com

Europe: +44 (0) 118 936 7060

customerservice.europe@chartindustries.com



Innovation. Experience. Performance.®

SERVICE BULLETIN

PN: 21285171

DATE: 5/31/2018

MODEL: Companion C31/C41 Oxygen Reservoirs and Companion C1000/C1000T Portables.

ISSUE: Advanced Notice of Discontinuation - Companion C31/C41 Oxygen Reservoirs and C1000/C1000T Portables.

NOTES: The Companion C31/C41 Reservoirs and C1000/C1000T Portables are due to be made obsolete on 12/31/2018. These LOX Products will be made obsolete due to low sales volume and due to the redundancy with the newly enhanced Liberator Reservoir Product Line. Until this discontinuation date, current service, sales and parts needs for all models will still be fulfilled.

For stationary oxygen Reservoirs, customers can use the Liberator Reservoirs, these are available in a wide variety of sizes and have the benefit of allowing flow rates up to 15 LPM. The C1000/C1000T portables will be replaced by the Stroller/High Flow Stroller models giving customers the added option of being able to choose our side fill systems.

C31 / C41 Reservoir and C1000 / C1000T Portables will be available for sale during the rest of 2018 and will be effectively discontinued after December 31, 2018.

CAIRE will provide parts and service for the Companion C31/C41 Oxygen Reservoirs and Companion C1000/C1000T until 12/31/2023. After this date CAIRE may continue to provide parts and service at the company's discretion.

CONTACT: For technical questions or concerns, contact Technical Service:

USA: 800-482-2473 techservice.usa@chartindustries.com

Europe: +44 (0) 118 936 7060 technicalservice.europe@chartindustries.com

For ordering information or general inquires, contact Customer Service:

USA: 800-482-2473 customerservice.usa@chartindustries.com

Europe: +44 (0) 118 936 7060 customerservice.europe@chartindustries.com



SERVICE BULLETIN

PN: 21288973

DATE: 10/01/2018

REVISED: 12/17/2018

MODEL: AirSep® NewLife® Intensity 10L and Elite 5L Oxygen Concentrators

ISSUE: Discontinuation of **select** models of AirSep® NewLife® Intensity 10L and AirSep® NewLife® Elite 5L. **The most common NewLife® models will still be available going forward.**

NOTES: Manufacturing of select models of AirSep® NewLife® Intensity 10L and AirSep® New Life® Elite 5L concentrators documented in the tables below will cease globally on December 31, 2018 to simplify the CAIRE Inc. product offerings and provide a more streamlined order and delivery process for our customers. CAIRE will continue to provide service and parts through 2021 to support warranty obligations.

The last day CAIRE Inc. will take orders for the models below is November 1, 2018. All orders are final and will be shipped per order instructions.

Note: Models previously manufactured without the O2 monitor feature will instead have the O2 monitor installed on any newly manufactured units going forward.

Table 1: AirSep® New Life® Elite 5L Concentrators

NewLife Elite SKU's - Stocking				
Model Type	Item	Description	Change	New Part Number
120V/60HZ Model	AS005-4	Standard, O2 Monitor, English Man, US Cord	No change	AS005-4
230V/50HZ Model	AS005-270	Standard, O2 Monitor, Air Outlet, Oxy Silent, Multi Lang. Man, UK Cord	No change	AS005-270

230V/50HZ Model	AS005-555	Standard, O2 Monitor, Oxy Silent, Multi Lang. Man, EUR Cord.	No change	AS005-555
120V/60HZ Model	AS005-264†	Standard, O2 Monitor, Oxy Silent, Air Outlet, Mask Kit, English Man, US Cord	No change	AS005-264†
120V/60HZ Model	AS005-265†	Standard, O2 Monitor, Oxy Silent, Air Outlet, Port. Man, BRA Cord.	No change	AS005-265†
230V/50HZ Model	AS005-244†	Standard, O2 Monitor, Air Outlet, Oxy Silent, Multi Lang. Man, ARG Cord	No change	AS005-244†
230V/50HZ Model	AS005-550	Dual Flow, O2 Monitor, English Man, EUR Cord	No change	AS005-550
230V/60HZ Model	AS005-241†	Standard, O2 Monitor, Multi Lang. Man, UK Cord, Arabic Labels	No change	AS005-241†
230V/60HZ Model	AS005-263†	Standard, O2 Monitor, Air Outlet, Multi Lang. Man, UK Cord, Arabic Labels	No change	AS005-263†

AirSep® New Life® Elite 5L SKU's Obsolete				
Model Type	Item	Description	Change	New Part Number
120V/60HZ Model	AS005-87	Standard, Non O2 Monitor, Air Outlet, English Man, US Cord	Replaced by	AS005-264
120V/60HZ Model	AS005-84	Standard, O2 Monitor, English Man, US Cord	Replaced by	AS005-4
120V/60HZ Model	AS005-1U	Re- MFG, Standard, Non O2 Monitor, English Man, US Cord	Replaced by	AS005-4
120V/60HZ Model	AS005-4U	Re- MFG, Standard, O2 Monitor, English Man, US Cord	Replaced by	AS005-4
120V/60HZ Models	AS005-243	Standard, O2 Monitor, Oxy-Silent, English Manual, US Cord	Replaced by	AS005-264
120V/60HZ Models	AS005-1	Standard, Non O2 Monitor, Oxy-Silent, English Manual, US Cord	Replaced by	AS005-4
230V/50HZ Model	AS005-508	Standard, Non O2 Monitor, Air Outlet, Multi Lang. Man, EUR Cord	Replaced by	AS005-270
230V/50HZ Model	AS005-225	Standard, O2 Monitor, Multi Lang. Man, EUR Cord	Replaced by	AS005-555

230V/50HZ Model	AS005-255	Standard, O2 Monitor, Multi Lang. Man, UK Cord	Replaced by	AS005-270
230V/50HZ Model	AS005-300	Standard, O2 Monitor, Chinese Manual, China Cord	Replaced by	AS005-555*
230V/50HZ Model	AS005-227	Standard, O2 Monitor, Mutli Lang. Man, AUS Cord	Replaced by	AS005-555*
230V/50HZ Model	AS005-230	Standard, O2 Monitor, Multi Lang. Man, UK Cord	Replaced by	AS005-270
230V/50HZ Model	AS005-511	Standard, O2 Monitor, Air Outlet, Multi Lang. Man, EUR Cord	Replaced by	AS005-270*
230V/50HZ Models	AS005-502	Standard, Non O2 Monitor, Multi Lang. Manual, EUR Cord	Replaced by	AS005-555
230V/50HZ Models	AS005-266	Standard, Non O2 Monitor, Multi Lang. Manual, UK Cord	Replaced by	AS005-270
230V/60HZ Model	AS005-3	Standard, Non O2 Monitor, English Manual, EUR Cord	Replaced by	No replacement
230V/60HZ Model	AS005-261	Standard, Non O2 Monitor, Air Outlet, Port Manual, EUR Cord	Replaced by	No replacement
230V/60HZ Model	AS005-6	Standard, O2 Monitor, English Man, EUR Cord	Replaced by	No replacement

Table 2: AirSep® NewLife® Intensity 10L

AirSep® NewLife® Intensity 10L SKU's Stocking				
Model Type	Item	Description	Change	New Part Number
120V/60HZ Model	AS099-101	Standard, O2 Monitor, English Man, US Cord (State-of-the-Art Design)	No change	AS099-101
120V/60HZ Model	AS099-4	Dual Flow, O2 Monitor, English Man, US Cord	No change	AS099-4
230V/50HZ Model	AS099-10	Dual Flow, O2 Monitor, Multi Lang Man, EUR Cord	No change	AS099-10
230V/50HZ Model	AS099-103	Standard, O2 Monitor, Multi Lang Man, Euro Cord (State-of-the-Art Design)	No change	AS099-103
230V/50HZ Model	AS099-210	Standard, O2 Monitor, Multi Lang Man, UK Cord (State-of-the-Art Design)	No change	AS099-210

230V/50HZ Model	AS099-211	Standard, O2 Monitor, Multi Lang Man, AUS Cord	No change	AS099-211
230V/50HZ Model	AS099-213	Standard, O2 Monitor, Humidifier Bottle Kit, Mult Lang Man, EUR Cord (State-of-the-Art Design)	No change	AS099-213
230V/50HZ Model	AS099-201	Dual Flow, O2 Monitor, Multi Lang Man, UK Cord	No change	AS099-201
230V/50HZ Model	AS099-200	Dual Flow, O2 Monitor, Multi Lang Man, AUS Cord	No change	AS099-200

AirSep® NewLife® Intensity 10L SKU's obsolete				
Model Type	Item	Description	Change	New Part Number
120V/60HZ Model	AS099-100	Standard, Non O2 Monitor, English Manual, US Cord	Replaced by	AS099-101
120V/60HZ Model	AS099-205	Standard, Non O2 Monitor, English Manual, US Cord, Mask Kit	Replaced by	AS099-101**
120V/60HZ Model	AS099-206	Standard, O2 Monitor, English Manual, Brazilian/EUR Cord, Brazilian Labels	Replaced by	AS099-213
120V/60HZ Model	AS099-1	Dual Flow, Non O2 Monitor, English Manual, US Cord	Replaced by	AS099-4
120V/60HZ Model	AS099-100U	Re-MFG Standard, Non O2 Monitor, English Manual, US Cord	Replaced by	AS099-101
120V/60HZ Model	AS099-101U	Re-MFG Standard, O2 Monitor, English Manual, US Cord	Replaced by	AS099-101
120V/60HZ Model	AS099-1U	Re-MFG Dual Flow, Non O2 Monitor, English Manual, US Cord	Replaced by	AS099-4
120V/60HZ Model	AS099-4U	Re-MFG Dual Flow, O2 Monitor, English Manual, US Cord	Replaced by	AS099-4
230V/50HZ Model	AS099-102	Standard, Non O2 Monitor, Multi Lang Manual, EUR Cord	Replaced by	AS099-103*
230V/50HZ Model	AS099-207	Standard, Non O2 Monitor, Multi Lang Manual, UK Cord	Replaced by	AS099-210
230V/50HZ Model	AS099-208	Standard, Non O2 Monitor, Multi Lang Manual, AUS Cord	Replaced by	AS099-211

230V/50HZ Model	AS099-212	Standard, O2 Monitor, Multi Lang Manual, ARG Cord	Replaced by	AS099-211***
230V/50HZ Model	AS099-209	Standard, Non O2 Monitor, Multi Lang Manual, EUR Cord, Humidifier Kit	Replaced by	AS099-213
230V/50HZ Model	AS099-20	Standard, O2 Monitor, Chinese Manual, Chinese Cord	Replaced by	AS099-103*
230V/50HZ Model	AS099-203	Standard, O2 Monitor, Multi Lang Manual, EUR Cord	Replaced by	AS099-10
230V/50HZ Model	AS099-202	Standard, O2 Monitor, Multi Lang Manual, EUR Cord, Humidifier Kit	Replaced by	AS099-213
230V/50HZ Model	AS099-204	Standard, O2 Monitor, Humidifier Bottle Kit, Multi Lang Man, EUR Cord	Replaced by	AS099-213
230V/50HZ Model	AS099-7	Dual Flow, Non O2 Monitor, Multi Lang Manual, EUR Cord	Replaced by	AS099-10
230V/50HZ Model	AS099-215	Dual Flow, Non O2 Monitor, Multi Lang Manual, UK Cord	Replaced by	AS099-201
230V/50HZ Model	AS099-214	Dual Flow, Non O2 Monitor, Multi Lang Manual, AUS Cord	Replaced by	AS099-200
230V/50HZ Model	AS099-104	Dual Flow, O2 Monitor, Chinese Cord, Chinese Manual	Replaced by	AS099-10*
230V/50HZ Model	AS099-103U	Re-MFG Standard, O2 Monitor, Multi Lang Manual, EUR Cord	Replaced by	AS099-103
230V/50HZ Model	AS099-10U	Re-MFG Dual Flow, O2 Monitor, Multi Lang Man, EUR Cord	Replaced by	AS099-10

†Models previously manufactured without the O2 monitor option will be manufactured with the O2 monitor option going forward.

*Must purchase item 5591-SEQ as an accessory to allow equivalent plug type as the obsolete model.

**Purchase item MS013-1 as an accessory to receive mask and tubing.

***Replacement model equipped with a 3-prong (grounded) plug in place of 2-prong plug.

Note: Models replacing the obsolete Chinese model units include a multi-lingual manual but do not contain Chinese as one of the language options. Contact Customer Service or your local CAIRE sales rep to inquire about user manual language options.

CAIRE will continue to manufacture and stock a variety of AirSep® NewLife® Intensity 10L and AirSep® New Life® Elite 5L models and a CAIRE representative can help you select the right concentrator for your business needs.

CONTACT: For technical questions or concerns, contact Technical Service:

USA: 800-482-2473

www.cairemedical.com

Europe: +44 1344 403100

www.cairemedical.com

For ordering information or general inquires, contact Customer Service:

USA: 800-482-2473

www.cairemedical.com

Europe: +44 1344 403100

www.cairemedical.com

Copyright © 2018 CAIRE Inc. CAIRE Inc. reserves the right to discontinue its products, or change the prices, materials, equipment, quality, descriptions, specifications and/or processes to its products at any time without prior notice and with no further obligation or consequence. All rights not expressly stated herein are reserved by us, as applicable.



Innovation. Experience. Performance.®

SERVICE BULLETIN

PN: 21297437

DATE: 6/28/2018

MODEL: CAIRE LOX Products

ISSUE: IEC 60601-1-2 Medical Electrical Equipment – Electromagnetic Disturbances 4th Edition Compliance

NOTES: All currently manufactured CAIRE LOX products with electronic liquid level gauges are IEC 60601-1-2 3rd Edition compliant. Please see table below for complete list of current models. Note: products that do not have an electronic liquid level gauge are not required to be compliant with 60601-1-2.

Reservoirs				
Liberator 20	Liberator 30	Liberator 37	Liberator 45	Liberator 60
Helios H36	Helios H46	Helios U36	Helios U46	
Portables				
Spirit 300	Spirit 600	Spirit 1200		
Sprint	Stroller	Hi Flow Stroller		

The above mentioned CAIRE LOX products will be IEC 60601-1-2 4th Edition compliant in anticipation of the 4th edition which will be required in Europe as of Jan 1st, 2019, with the exception of the Helios Reservoir product lines will have already been or will be discontinued by that time (see bulletins 21267961 and 21285171 for details on those announcements).

CONTACT: For technical questions or concerns, contact Technical Service:

USA: 800-482-2473
techservice.usa@chartindustries.com

Europe: +44 (0) 118 936 7060
technicalservice.europe@chartindustries.com

For ordering information or general inquires, contact Customer Service:

USA: 800-482-2473
customerservice.usa@chartindustries.com

Europe: +44 (0) 118 936 7060
customerservice.europe@chartindustries.com



*SERVICE
BULLETIN*

PN: 21303735

RELEASE DATE: June 29, 2018

REVISION DATE(S): January 4, 2019 (rev B), February 13, 2019 (rev C)

MODEL: CAIRE Concentrators

ISSUE: IEC 60601-1-2 Medical Electrical Equipment – Electromagnetic Disturbances 4th Edition Compliance

NOTES: In anticipation of the IEC 60601-1-2 Medical Electrical Equipment standard going into effect, the concentrator models below currently being manufactured are compliant.

Visionaire 5 (230 VAC models only)
NewLife Elite and Intensity 10
Eclipse 5 (2-LED models only)
FreeStyle Comfort

CONTACT: For technical questions or concerns, contact Technical Service:

USA: 800-482-2473

www.cairemedical.com

Europe: +44 (0) 118 936 7060

www.cairemedical.com

For ordering information or general inquires, contact Customer Service:

USA: 800-482-2473

www.cairemedical.com

Europe: +44 (0) 118 936 7060

www.cairemedical.com

Copyright © 2019 CAIRE Inc. CAIRE Inc. reserves the right to discontinue its products, or change the prices, materials, equipment, quality, descriptions, specifications and/or processes to its products at any time without prior notice and with no further obligation or consequence. All rights not expressly stated herein are reserved by us, as applicable.



SERVICE BULLETIN

PN: 21307249

RELEASE DATE: August 2nd 2018

REVISION DATE: November 5th 2018

MODEL: Eclipse 5[®] Oxygen Concentrator

ISSUE: Discontinuation and End of Service Life of 3-LED Eclipse 5

NOTES: As of October 1, 2018 CAIRE announces the discontinuation of the Eclipse 5 oxygen concentrator with the 3-LED control panel display. Effective October 1, 2021 CAIRE will no longer offer service options for the Eclipse 5 that has the 3-LED display. The 3-LED Eclipse 5 is being replaced with the 2-LED Eclipse 5 oxygen concentrator with wireless capabilities. See the table below for the affected part numbers. Reference Service Bulletin 21220048 for more details on the changes for the 3-LED model and 2-LED model Eclipse 5.

Previous Item Number	Description	Change	New Part Number	First SN
6900-SEQ	E5 SYS, ENG, 110, NA CORD	2-LED Control Panel Display, Wireless Capabilities.	6900BT-SEQ	GPB0918050151
6900LN-SEQ	E5 SYS ENG 110 NA CORD 2 BATTERIES	2-LED Control Panel Display, Wireless Capabilities	6900LN-SEQ	TBD
6900-C1-SEQ	E5 SYS, C1 EN, FR, GE, SP, IT, PO, DU	2-LED Control Panel Display, Wireless Capabilities	6900-C1-SEQ	GPB0918050186
6900-C2-SEQ	E5 SYS, C2 DA, NO, SW, FI	2-LED Control Panel Display, Wireless Capabilities	6900-C2-SEQ	TBD
6900-08-SEQ	E5 SYS, UK	2-LED Control Panel Display, Wireless Capabilities	6900-08-SEQ	TBD

CONTACT:

For technical questions or concerns, contact Technical Service:

USA: 800-482-2473

www.cairemedical.com

Europe: +44 (0) 119-936-7060

www.cairemedical.com

For ordering information or general inquiries, contact Customer Service:

USA: 800-482-2473

www.cairemedical.com

Europe: +44 (0) 119-936-7060

www.cairemedical.com

Copyright © 2018 CAIRE Inc. CAIRE Inc. reserves the right to discontinue its products, or change the prices, materials, equipment, quality, descriptions, specifications and/or processes to its products at any time without prior notice and with no further obligation or consequence. All rights not expressly stated herein are reserved by us, as applicable.



SERVICE BULLETIN

PN: 21326625

RELEASE DATE: September 11, 2018

REVISION DATE(S): January 31, 2019 (rev B)

MODEL: SeQual® eQuinox™ and SeQual® Oxywell™ Oxygen Concentrators

ISSUE: Discontinuation and End of Service Life of the SeQual® eQuinox™ and the SeQual® Oxywell™

NOTES: CAIRE announces the discontinuation of the SeQual® Oxywell™ as of September 31st 2017 and the SeQual® eQuinox™ as of December 31st 2018. Effective December 31st 2021 CAIRE will no longer offer service options for the SeQual® eQuinox™, and September 31st 2022 for the SeQual® Oxywell™. The affected part numbers are as follows:

<u>Part Number</u>	<u>Description</u>
4807-C3-SEQ	SYS, ENG, OXYWELL, NA CORD
4807-SEQ	SYS, EQUINOX, NA CORD
4807-C1-SEQ	SYS, EQX, C1
4807-C2-SEQ	SYS, EQX, C2
4807-07-SEQ	SYS, EQX, AM
4807-08-SEQ	SYS, EQX, UK
4807-09-SEQ	SYS, EQX, CHN
4807-10-SEQ	SYS, EQX, JP
4807-12-SEQ	SYS, EQX, UAE
4807-15-SEQ	SYS, EQX, IS
4807-17-SEQ	SYS, EQX, DN
4807-20-SEQ	SYS, EQX, SZ
4807-99-SEQ	SYS, EQX, CHN
4837-SEQ	SYS, EQX, 24C, NA
4837-C1-SEQ	SYS, EQX, 24C, C1
4837-C2-SEQ	SYS, EQX, 24C, C2
4837-C3-SEQ	SYS, ENG, OXYWELL, 24C, NA COR
4837-07-SEQ	SYS, EQX, 24C, AM
4837-08-SEQ	SYS, EQX, 24C, UK

4837-10-SEQ
4837-17-SEQ

SYS, EQX, 24C, JP
SYS, EQX, 24C, DN

CAIRE will begin phasing out production by year end, but will have a limited number of units available to support customer orders and their phase-out plans on first-come, first-served basis. The company will cease producing any new units once this supply is exhausted. CAIRE will continue to provide service parts for the SeQual[®] eQuinox[™] through 2021 to support its warranty obligations for the existing fleet.

The SeQual[®] Oxywell[™] was discontinued in September 2017, CAIRE will continue to provide service and parts for the SeQual[®] Oxywell[™] until September 31, 2022.

CONTACT: For technical questions or concerns, contact Technical Service:

USA: 800-482-2473

www.cairemedical.com

Europe: +44 (0) 118 936 7060

www.cairemedical.com

For ordering information or general inquiries, contact Customer Service:

USA: 800-482-2473

www.cairemedical.com

Europe: +44 (0) 118 936 7060

www.cairemedical.com

Copyright © 2019 CAIRE Inc. CAIRE Inc. reserves the right to discontinue its products, or change the prices, materials, equipment, quality, descriptions, specifications and/or processes to its products at any time without prior notice and with no further obligation or consequence. All rights not expressly stated herein are reserved by us, as applicable.



SERVICE BULLETIN

PN: 21329212

DATE: 10/3/18

MODEL: NewLife 5L and 10L Models

ISSUE: NewLife 5L and 10L Main Circuit Board Retrofit Instructions

This instruction is intended to guide technicians through replacing circuit board item CB154 / CB160 (or older circuit boards) with circuit board CB200. Other modifications will be required to install CB200 on previous design units, including updated wiring harness, alarm buzzer, and O2 monitor board (for units originally equipped with the O2 monitor option). There are two procedures listed below for you to upgrade the NewLife with the 60601 compliant board. Procedure A specifies how to upgrade the board and components with one LED light or non- oxygen monitor concentrators. Procedure B will instruct the operator how to upgrade the concentrator to the current 60601 compliant standard for the 3-LED oxygen monitor concentrators.

Kit Part Number	Main Board Included in Kit	Model
KI608-4	CB200-4	NewLife 5L (230 V, 50 Hz)
KI608-3	CB200-3	NewLife 5L (120 V, 60 Hz)
KI608-2	CB200-2	NewLife 10L (230 V, 50 Hz)
KI608-1	CB200-1	NewLife 10L (120 V, 60 Hz)

Table 1. Available Kit Options

Tools Required:

- Flat-Head Screwdriver
- Phillips-Head Screwdriver
- ESD electrostatic Protection
- Wire Cutters
- Power Drill with 0.093 inch drill bit
- Heat Gun (Procedure B)

Table 2. Parts Included with KI608

Part Number	Description	Qty Included
AL022-1	Alarm with Wire Harness	1
CB200-*	Main Circuit Board, programmed, (<i>*see Table 1 for details</i>)	1
CB196-1	O2 Board	1
WH145-2	LED Wire Harness	1
WH146-1	Power Switch Wire Harness	1
WH147-1	Main Wire Harness	1
SC177-1	Screws for Buzzer and O2 Board	4
HA006-1	Nylon Spacers for O2 Board	2
TW004-1	Tie Wrap	1
IL070-1	LED Housing	3
HA087-1	Lamp Retainers	6
21329212	Instruction Bulletin for Board Retrofit	1
LA439-1	O2 Label	1
LA190-1	Label Operating Pictogram	1
WH107-1	O2 Board wire harness	1
MI450-1	Heat Shrink 1.5" for circuit board and power switch	2
MI449-1	Heat Shrink 2" for hour meter	1

Procedure A:

1. Switch off the unit and disconnect the power cord.
2. Remove the side panels with the flat head screwdriver.
3. Disconnect the main power 10-pin connector from the circuit board. See Figure 1. Main Wire Harness

Note : If working on the NewLife 10L 230V unit, the 2-pin compressor connector will need to be disconnected as well. This is located directly to the right of the main power 10-pin connector.

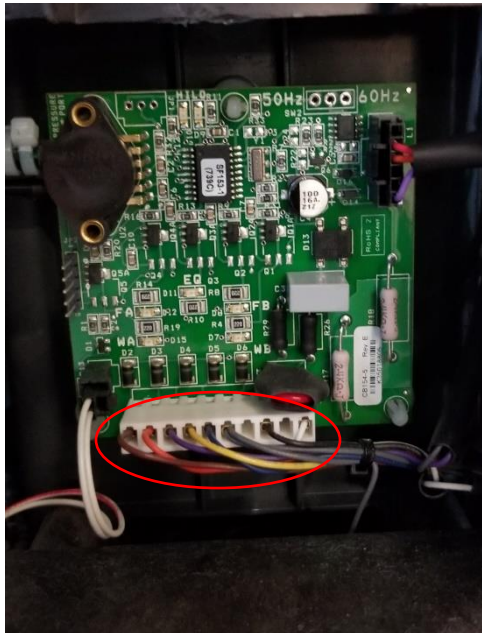


Figure 1. Main Wire Harness

4. Disconnect the alarm 6-pin connector from the circuit board. See Figure 2. Alarm Wire Harness

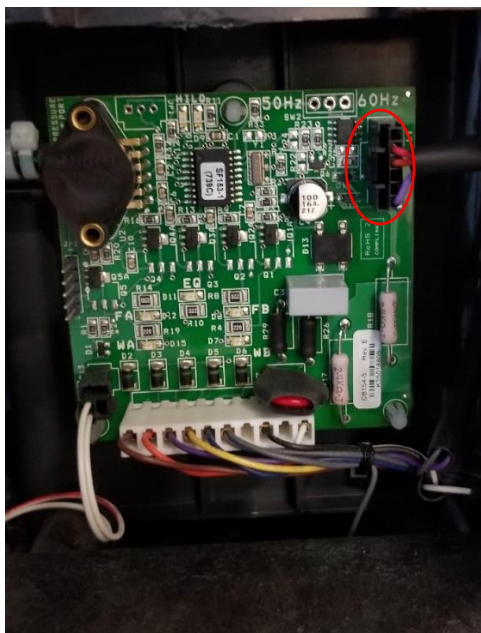


Figure 2. Alarm Wire Harness

5. Cut the tie-wrap at the circuit board pressure transducer and disconnect the green tube from the transducer. See Figure 3. Pressure Transducer Zip Tie



Figure 3. Pressure Transducer Zip Tie

6. Push in on the circuit board support tabs while you lift each area of the circuit board to remove circuit board from the control panel. See Figure 4. Board Supports

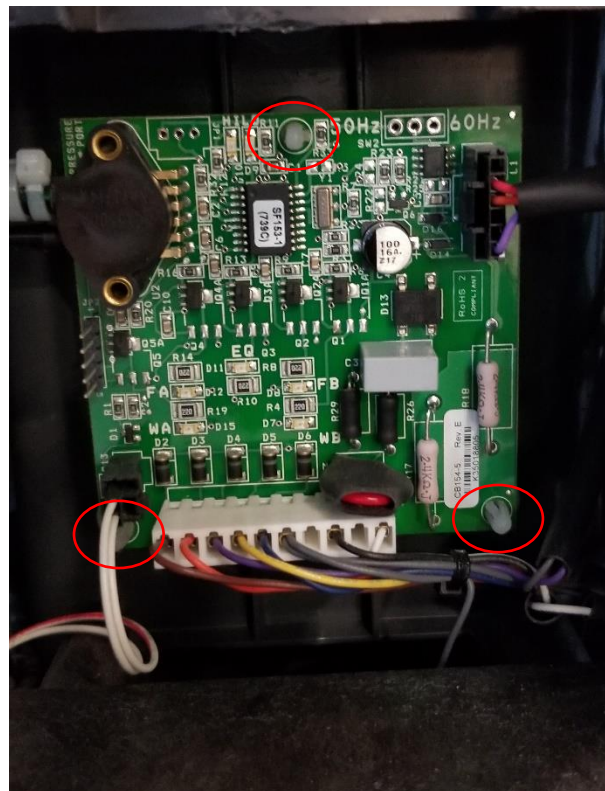


Figure 4. Board Supports

7. Remove main wire harness and O2 wire harness from hour meter, terminal block, valve block, EQ valve and fan board. Discard wire harness.
8. Remove and discard buzzer, 9 Volt battery, and 9 volt battery holder.
9. Remove and discard buzzer harness from the power switch.
10. Cut zip tie and move compressor capacitor out of the way to allow drilling of new alarm buzzer mounting holes.
11. Install alarm buzzer AL022-1 with one mounting screw in location 1 (SC177-1). This screw will be aligned with one of the existing holes used for the 9 Volt battery holder. See Figure 5. Alarm Mounting Hole.



Figure 5. Alarm Mounting Hole

12. Drill a second mounting hole in the case with a 0.093" drill bit. See Figure 6.

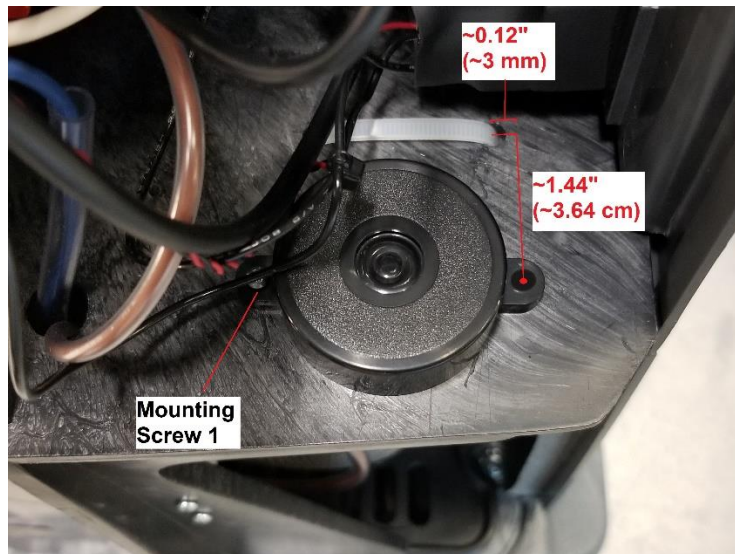


Figure 6.

13. Install second alarm buzzer mounting screw SC177-1 in the new mounting hole that was drilled in step 12.
14. Re-attach the capacitor with a new zip tie, TW004-1.

NOTE: For non-oxygen monitor units, skip steps 15-22 and proceed to step 23. For oxygen monitor units, complete steps 15-35.

15. Remove installed O2 monitor board and discard.
16. Hold EQ valve out of the way and drill two holes with a 0.093" drill bit for the O2 monitor board (CB196-1). The holes should be 2.37 inches (6 cm) apart and inline with the existing mounting holes. See Figure 7. New Board Mounting Holes

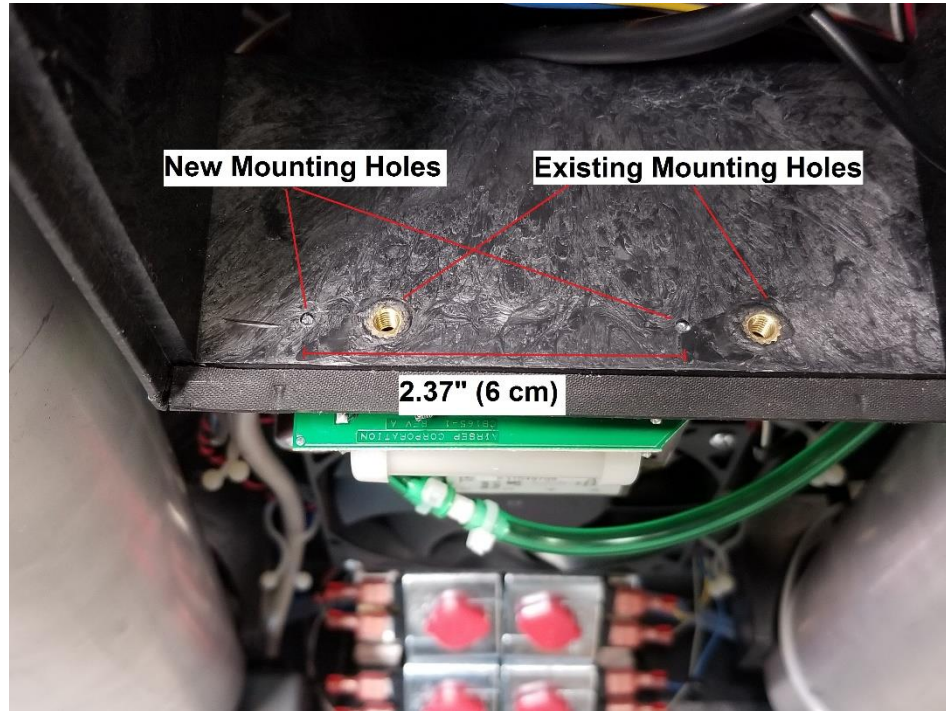


Figure 7. New Board Mounting Holes

17. Attach wire harness (WH107-1) to O2 board at J1C1. See Figure 8.



Figure 8.

18. Install O2 board (CB196-1) onto superstructure with two screws (SC177-1) and two nylon spacers (HA006-1). Use ESD protection when handling boards. See Figure 9.

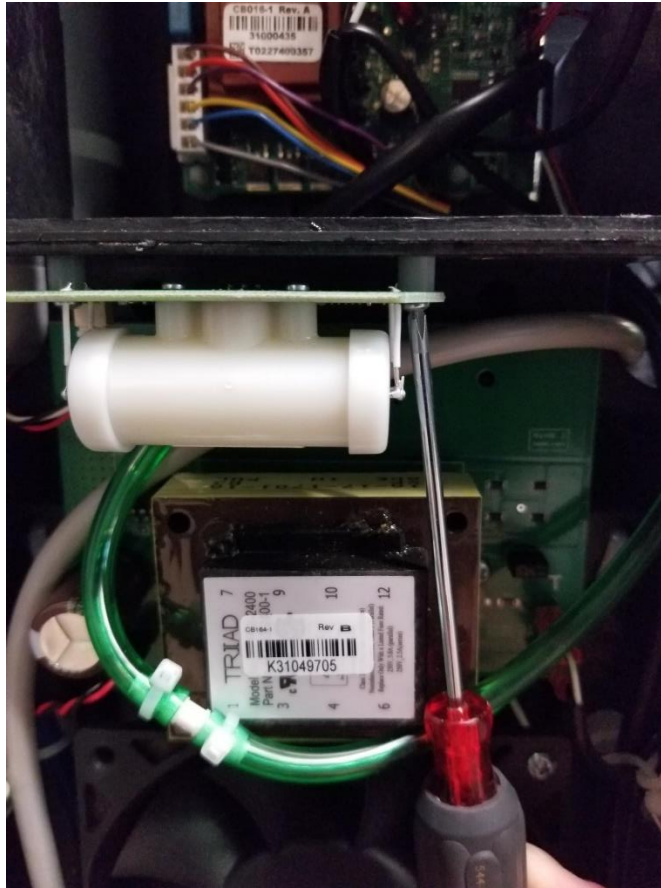


Figure 9.

19. Attach tubing to the O2 board. See Figure 10.



Figure 10.

20. Install IL070-1 and retainer HA087-1 into the control panel O2 Monitor hole. Add retainer (HA087-1) bevel side opposite the front panel. See Figure 11.



Figure 11.

21. Install the top LED wire harness (WH145-2) only, the O2 monitor light, into the hole and tuck the other lights behind the control panel. The O2 monitor light will have red and purple wiring. See Figure 12.
22. Add retainer HA087-1 (with the bevel side facing the front panel) onto the lens while holding LED into the housing. Pressing the two HA087-1 retainers together will lock them in place. The beveled sides of both retainers should be facing each other. See Figure 12.



Figure 12.

23. Cut zip tie off the new harnesses WH147-1 and WH146-1. You will now have two harnesses. See Figure 13.



Figure 13.

24. Install main harness by first installing the 6 pin and purple/gray harness and route through center hole by fan board up to the EQ Valve. See Figure 14.

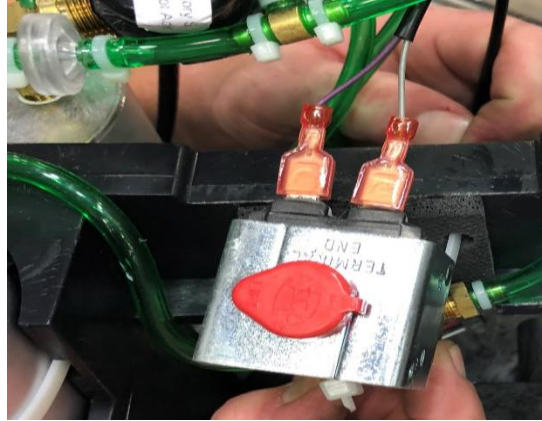


Figure 14.

25. Install bottom of harness to valve block. See Figure 15.
Left Terminal: Top: orange, gray | Bottom: brown, gray
Right Terminal: Top: yellow, gray | Bottom: blue, gray

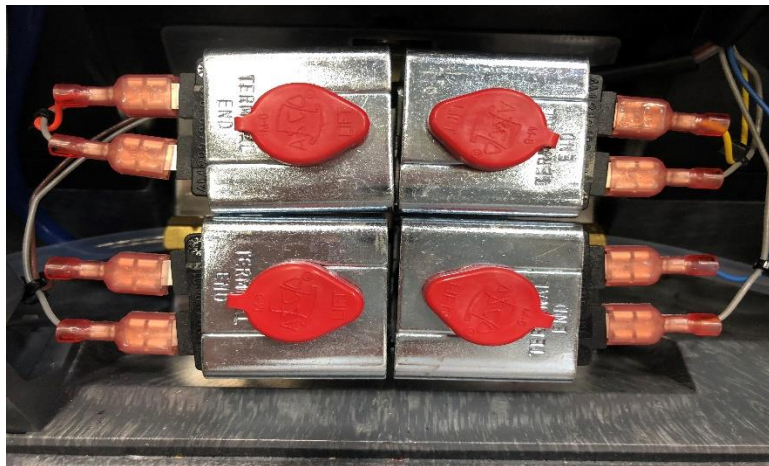


Figure 15.

26. Install the three pins (white terminal) through the center hole by the fan board to the man board.
27. Install the small terminals (black and white terminals) to the fan board. Note: Ensure white on top, black on bottom for uniformity. See Figure 16.



Figure 16.

28. Install the terminals into the terminal block. See Figure 17.

Bottom Left (Neutral) : Blue and double white

Bottom Right (Positive) : Brown and double Black

Top Left (Neutral) : Single white and single white

Top Right (Positive) : Single black

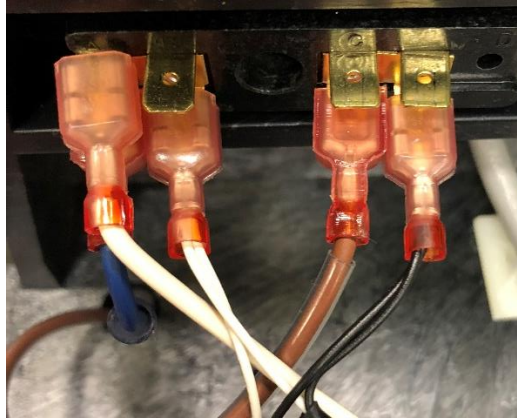


Figure 17.

29. Install main circuit board by inserting tube onto the pressure sensor and attach with zip tie. See Figure 18.



Figure 18.

30. Insert standoffs back on the board and connect to the front cabinet.
31. Install 6 pin and 3 pins from harness onto the board. See Figure 19.A
Note : If working on the NewLife 10L 230V unit, the 2-pin compressor connector will need to be installed as well. This is located directly to the left of the main power 3-pin connector. See Figure 19.B



Figure 19.A

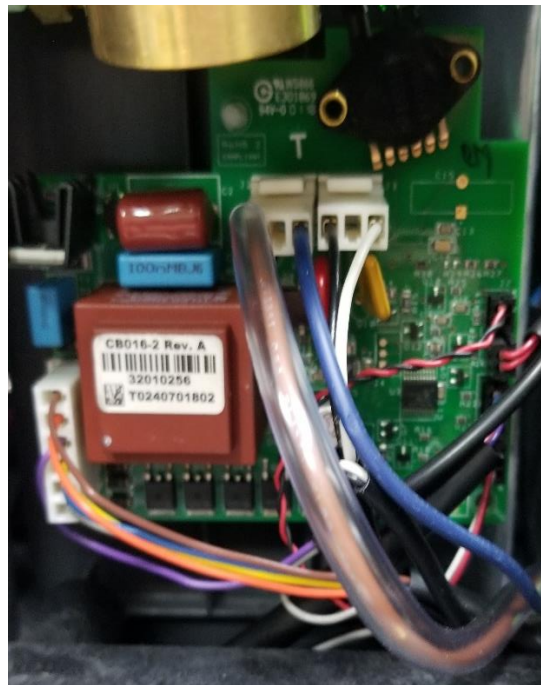


Figure 19.B

32. Attach O2 harness J10, LED harness J11 and power switch harness J8 and buzzer J7 to the board. See Figure 20.



Figure 20.

33. For non-oxygen monitor units only, attach the alarm LEDs to the main board, but leave them tucked inside the front case panel (they are not needed to be installed in the front case panel if the unit was not originally equipped with the oxygen monitor feature).
34. Attach power switch jumper wire from the circuit breaker to the terminal block positive top left. See Figure 21.

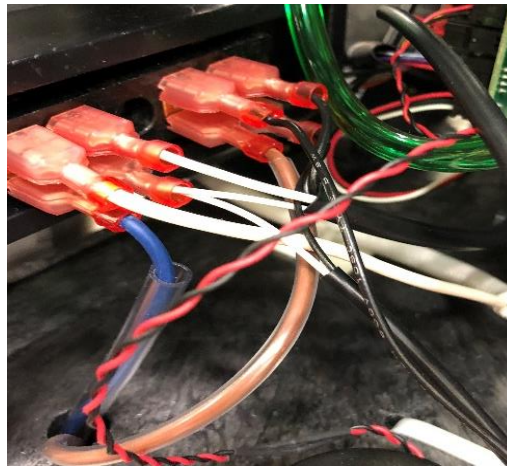


Figure 21.

35. Reattach case panels and test to ensure O2 monitor light works (if equipped) and purity/flow is to specifications.

Procedure B

1. Follow instructions 1-19 from Procedure A.
2. Apply O2 label and instruction label (LA439-1 and LA190-1) to the front cabinet.
See Figure 22



Figure 22.

3. Drill additional holes for other LED lights.
4. Add retainers HA087-1 (with the bevel side facing the front panel) onto each lens while holding LED into the housing. Pressing the two HA087-1 retainers together will lock them in place. The beveled sides of both retainers should be facing each other. See Figure 23



Figure 23.

5. Install LED Wire harness (WH145-2) into the holes. See Figure 24

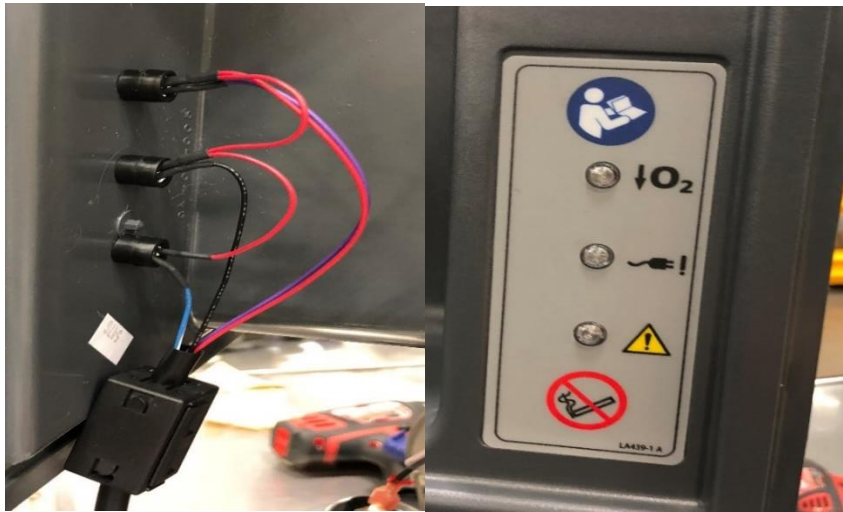


Figure 24.

6. Complete steps 23-34 from Procedure A.
7. Apply heat shrink to the hour meter, circuit breaker and power switch.
8. Combine power switch and control board into one heat shrink. See Figure 25

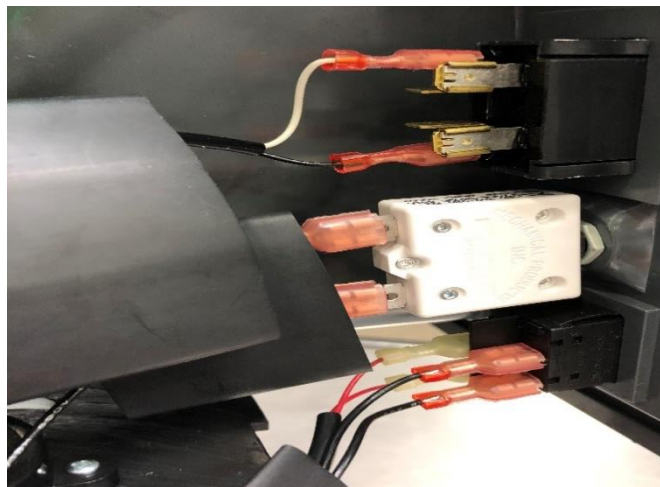


Figure 25.

9. Ensure connections are correct and then use the heat gun to complete the heat shrink starting closest to the cabinet then move backwards to the terminals. See Figure 26

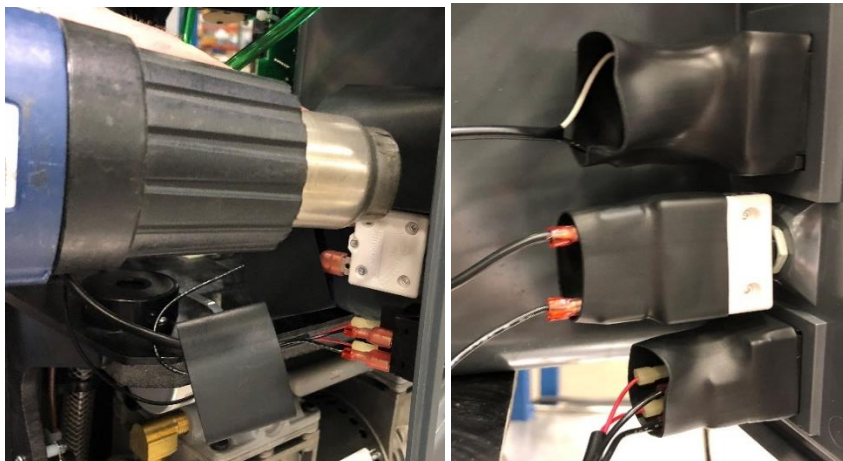


Figure 26.

10. Reattach the panels and test to ensure the top light illuminates for low O₂, middle light illuminates when there is a power failure, and the bottom light illuminates when there is high or low pressure. Also, ensure the purity/flow is to manufacturing specifications before boxing. See Figure 27



Figure 27.

CONTACT: For technical questions or concerns, contact Technical Service:
USA: 800-482-2473

www.cairemedical.com

Europe: +44 (0) 118 936 7060

www.cairemedical.com

For ordering information or general inquiries, contact Customer Service:

USA: 800-482-2473

www.cairemedical.com

Europe: +44 (0) 118 936 7060

www.cairemedical.com

Copyright © 2018 CAIRE Inc. CAIRE Inc. reserves the right to discontinue its products, or change the prices, materials, equipment, quality, descriptions, specifications and/or processes to its products at any time without prior notice and with no further obligation or consequence. All rights not expressly stated herein are reserved by us, as applicable.



SERVICE BULLETIN

PN: 21336031

DATE: 10/24/18

MODEL: SeQual Eclipse 5

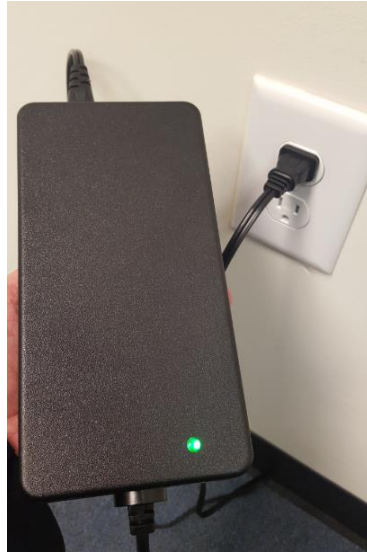
ISSUE: Instructions for proper use of AC power supply

This bulletin will serve as a reminder for the proper procedures in using the new 2 prong power supply for the Eclipse 5. Along with this bulletin, you may also reference pages 5 and 14 of the Eclipse 5 User Manual (CAIRE PN: 21182453).

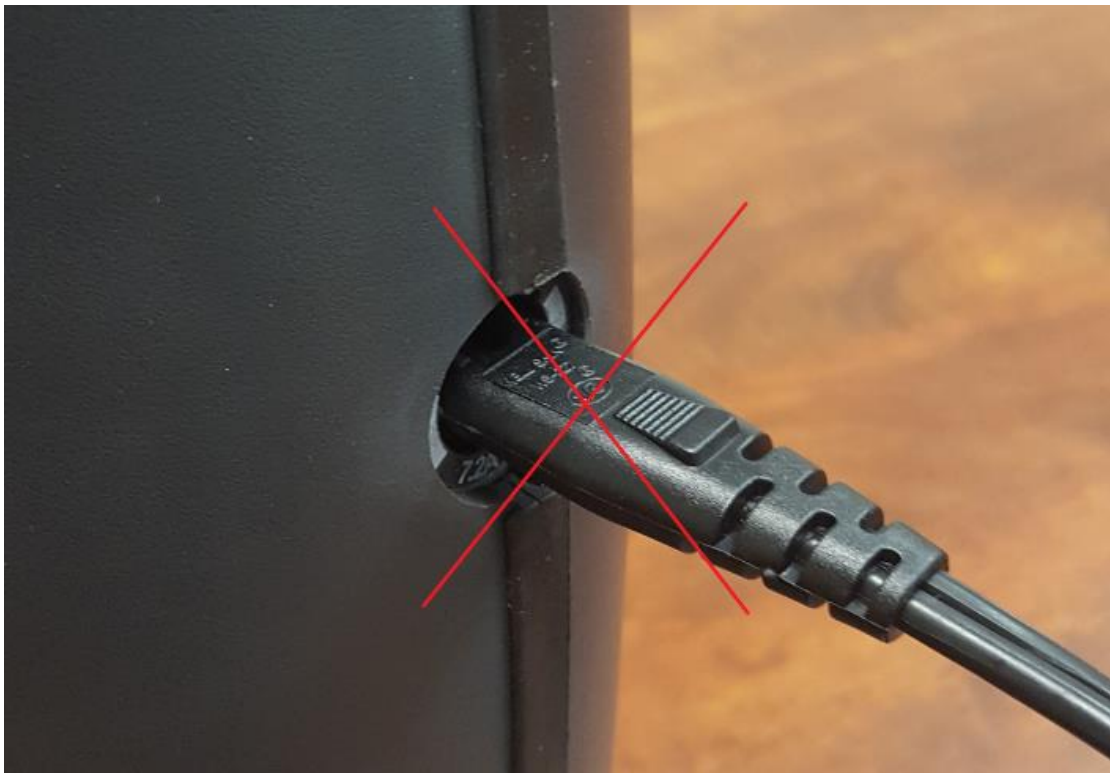
Step 1: Insert the AC power supply cord securely into the External Power Receptacle on the right side of the device.



Step 2: If your power supply has three pins, plug the AC power cord into a grounded AC outlet. If your supply has a two pin plug, plug the AC cord into a grounded or non-grounded AC outlet.



NOTE: The AC power cord cannot plug directly into Power Receptacle on side of the Eclipse 5. Doing so will damage the unit.



CONTACT: For technical questions or concerns, contact Technical Service:

USA: 800-482-2473

www.cairemedical.com

Europe: +44 (0) 118 936 7060

www.cairemedical.com

For ordering information or general inquires, contact Customer Service:

USA: 800-482-2473

www.cairemedical.com

Europe: +44 (0) 118 936 7060

www.cairemedical.com

Copyright © 2018 CAIRE Inc. CAIRE Inc. reserves the right to discontinue its products, or change the prices, materials, equipment, quality, descriptions, specifications and/or processes to its products at any time without prior notice and with no further obligation or consequence. All rights not expressly stated herein are reserved by us, as applicable.



SERVICE BULLETIN

PN: 21353847

DATE: 12/13/18
MODEL: VisionAire® Oxygen Concentrators
ISSUE: Cease commercial activity of select models of VisionAire® Oxygen Concentrators. The most common VisionAire® models will still be available going forward.

NOTES: Manufacturing of select models of VisionAire® concentrators documented in the tables below will cease globally on December 31, 2018 to simplify the CAIRE Inc. product offerings and provide a more streamlined order and delivery process for our customers. CAIRE will continue to provide service and parts through 2021 to support warranty obligations.

Table 1: VisionAire Concentrators – No Changes

VisionAire SKU's - Stocking			
Model Type	Item Number	Description	Change
230V/50HZ	AS098-708	AIRSEP,5L,230V,50HZ,AIR, VISIONAIRE	NO CHANGE
230V/50HZ	AS098-805	AIRSEP,5L,230V,50HZ,W/O2 MONITOR,VISIONAIRE,CHINA	NO CHANGE
230V/50HZ	AS098-17	AIRSEP, 5L, 230V, 50HZ, W/O2 MON, AU CORD, VA	NO CHANGE
230V/50HZ	AS098-18	AIRSEP, 5L, 230V, 50HZ, UK CORD, VA	NO CHANGE
230V/60HZ	AS098-20	AIRSEP, 5L, 230V, 60HZ, W/O2 MON, UK CORD, VA	NO CHANGE
230V/50HZ	AS098-5	AIRSEP,5L,230V,50HZ,W/O2 MONITOR,VISIONAIRE	NO CHANGE
230V/60HZ	AS098-6	AIRSEP,5L,230V,60HZ,WITH O2 MONITOR,VISIONAIRE	NO CHANGE
230V/50HZ	AS098-7	AIRSEP,5L,230V,50HZ,W/O2 MON, UK CORD,VISIONAIRE	NO CHANGE
230V/50HZ	AS098-711	AIRSEP,5L,230V,50HZ,AIR,W/O2 MONITOR,VISIONAIRE	NO CHANGE
230V/50HZ	AS098-15	AIRSEP,5L,230V,50HZ, WITH O2 MONITOR,SWISS CORD,VISIONAIRE	NO CHANGE
230V/60HZ	AS098-27	AIRSEP, 5L, 230V, 60Hz, WITH O2 MON, KOREA CORD, VA	NO CHANGE
115V/60HZ	AS098-21	AIRSEP, 5L, 115V, 60HZ, W/BESMED STARTER KIT, VA	NO CHANGE
115V/60HZ	AS098-719	AIRSEP, 5L, 115V, 60HZ, AIR, W/BESMED STARTER KIT, VA	NO CHANGE

Table 2: VisionAire Concentrators – Obsolete No Replacements

VisionAire SKU's – Obsolete No Replacement			
Model Type	Item	Description	Change
230V/60HZ	AS096-5	AIRSEP,3L,230V,60HZ,O2 MONITOR, VISIONARIE 3	OBS NO RB
115V/60HZ	AS096-6	AIRSEP,3L,115V,60HZ, VISIONARIE 3	OBS NO RB
115V/60HZ	AS096-7	AIRSEP,3L,115V,60HZ,O2 MONITOR, VISIONARIE 3	OBS NO RB
230V/50HZ	AS096-1	AIRSEP,3L,230V,50HZ, VISIONARIE 3	OBS NO RB
230V/50HZ	AS096-3	AIRSEP,3L,230V,50HZ,O2 MONITOR, UK VISIONARIE 3	OBS NO RB
115V/60HZ	AS096-8	AIRSEP,2L,115V,60HZ,O2 MONITOR, VISIONAIRE 2	OBS NO RB
230V/50HZ	AS096-2	AIRSEP,3L,230V,50HZ,O2 MONITOR, VISIONAIRE 3	OBS NO RB
230V/50HZ	AS096-2AP	AIRSEP,3L,230V,50HZ,A/P,W/O2, VISIONAIRE 3	OBS NO RB
230V/50HZ	AS096-3AP	AIRSEP,3L,230V,50HZ,AP,W/O2, VISIONAIRE 3	OBS NO RB
230V/50HZ	AS098-26	AIRSEP,5L,230V,50HZ,W/O2	OBS NO RB

Table 3: VisionAire Concentrators – Obsolete, Replace with Companion 5 PN 15067005

VisionAire SKU's – Obsolete No Replacement				
Model Type	Item	Description	Change	New Part Number
115V/60HZ	AS098-101	AIRSEP,5L,115V,60HZ,VISIONAIRE	OBS RB	15067005
115V/60HZ	AS098-101U	AIRSEP,VISIONAIRE V,RE-MFG,	OBS RB	15067005
115V/60HZ	AS098-104	AIRSEP,5L,115V,60HZ,WITH O2	OBS RB	15067005
115V/60HZ RE-MFG	AS098-104U	AIRSEP,VISIONAIRE V, RE-MFG,	OBS RB	15067005
115V/60HZ	AS098-707‡	AIRSEP,5L,115V,60HZ,AIR,	OBS RB	15067005
115V/60HZ	AS098-710	AIRSEP,5L,115V,60HZ,AIR,W/O2	OBS RB	15067005
115V/60HZ	AS098-4	AIRSEP,5L,115V,60HZ,WITH O2	OBS RB	15067005
115V/60HZ	AS098-1	AIRSEP,5L,115V,60HZ,VISIONAIRE	OBS RB	15067005
115V/60HZ	AS098-101C	AIRSEP VISIONAIRE,115V,60HZ	OBS RB	15067005
115V/60HZ	AS098-101S	AIRSEP VISIONAIRE,115V,60HZ	OBS RB	15067005
115V/60HZ	AS098-104C	AIRSEP VISIONAIRE,115V,60HZ	OBS RB	15067005
115V/60HZ	AS098-104S	AIRSEP VISIONAIRE,115V,60HZ	OBS RB	15067005
115V/60HZ	AS098-1C	AIRSEP VISIONAIRE,115V,60HZ	OBS RB	15067005
115V/60HZ	AS098-4C	AIRSEP VISIONAIRE,115V,60HZ	OBS RB	15067005
115V/60HZ	AS098-4M	CARE PROGRAM VISIONAIRE 5 W/OM	OBS RB	15067005
115V/60HZ	AS098-4S	AIRSEP VISIONAIRE,115V,60HZ	OBS RB	15067005
115V/60HZ	AS098-1S	AIRSEP VISIONAIRE,115V,60HZ	OBS RB	15067005
115V/60HZ	AS098-604	AIRSEP,5L,115V,60HZ,O2 MON,	OBS RB	15067005
115V/60HZ	AS098-107	AIRSEP,5L,115V,60HZ,AIR,	OBS RB	15067005
115V/60HZ	AS098-104CORE	AIRSEP,5L,115V,60HZ,WITH O2	OBS RB	15067005
115V/60HZ	AS098-101CORE	AIRSEP,5L,115V,60HZ,VISIONAIRE	OBS RB	15067005
115V/60HZ	AS098-110	AIRSEP,5L,115V,60HZ,AIR,W/O2	OBS RB	15067005
115V/60HZ	AS098-604	AIRSEP,5L,115V,60HZ,O2 MON,	OBS RB	15067005
115V/60HZ	AS098-713*	AIRSEP, 5L, 115V, 60HZ, AIR,	OBS RB	15067005

Table 4: VisionAire Concentrators – Obsolete, Replace with VisionAire

VisionAire SKU's – Obsolete No Replacement				
Model Type	Item	Description	Change	New Part Number
230V/50HZ	AS098-16	AIRSEP, 5L, 230V, 50HZ, AU CORD	OBS RB	AS098-17
230V/50HZ	AS098-2	AIRSEP,5L,230V,50HZ,VISIONAIRE	OBS RB	AS098-5
230V/60HZ	AS098-712‡	AIRSEP,5L,230V,60HZ,AIR,W/O2	OBS RB	AS098-6
230V/50HZ	AS098-716*	AIRSEP, 5L, 230V, 50HZ, AIR, W/O2, UK CORD	OBS RB	AS098-711
230V/60HZ	AS098-3	AIRSEP,5L,230V,60HZ,VISIONAIRE	OBS RB	AS098-6
230V/50HZ	AS098-715*	AIRSEP, 5L, 230V, 50HZ, AIR, UK CORD	OBS RB	AS098-708
230V/60HZ	AS098-19	AIRSEP, 5L, 230V, 60HZ, UK CORD	OBS RB	AS098-20
230V/60HZ	AS098-200	AIRSEP, 5L, 230V, 60HZ, UK CORD, ARABIC	OBS RB	AS098-20
230V/50HZ	AS098-22**	AIRSEP, 5L, 230V, 50HZ,	OBS RB	AS098-5
230V/50HZ	AS098-23**	AIRSEP, 5L, 230V, 50HZ, W/O2	OBS RB	AS098-5
230V/50HZ	AS098-24**	AIRSEP, 5L, 230V, 50HZ, W/O2	OBS RB	AS098-5
230V/50HZ	AS098-25†	AIRSEP, 5L, 230V, 50HZ, W/O2	OBS RB	AS098-5
230V/60HZ	AS098-709	AIRSEP,5L,230V,60HZ,AIR,	OBS RB	AS098-6
230V/60HZ	AS098-714*	AIRSEP, 5L, 230V, 60HZ, AIR, BRAZIL CORD	OBS RB	AS098-6
230V/60HZ	AS098-717‡	AIRSEP, 5L, 230V, 60HZ, AIR, UK CORD	OBS RB	AS098-805
230V/50HZ	AS098-718‡‡	AIRSEP, 5L, 230V, 50HZ, AIR, NEBULIZER	OBS RB	AS098-711
230V/50HZ	AS098-806*	AIRSEP,5L,230V,50HZ,W/O2, CHINA	OBS RB	AS098-711
230V/50HZ	AS098-802	AIRSEP,5L,230V,50HZ,	OBS RB	AS098-805
115V/60HZ	AS098-1M	CARE PROGRAM VISIONAIRE 5	OBS RB	AS098-5
230V/60HZ	AS098-200	AIRSEP, 5L, 230V, 60HZ, UK CORD ARABIC	OBS RB	AS098-20
230V/50HZ	AS098-5AP	AIRSEP,5L,230V,50HZ,A/P,W/O2	OBS RB	AS098-5
230V/50HZ	AS098-5C	AIRSEP VISIONAIRE,230V,50HZ	OBS RB	AS098-5
230V/50HZ	AS098-5M	AIRSEP VISIONAIRE,230V,50HZ	OBS RB	AS098-5
230V/50HZ	AS098-5S	AIRSEP VISIONAIRE,230V,50HZ	OBS RB	AS098-5

***Must purchase item 5591-SEQ as an accessory to allow equivalent plug type.**

****Purchase item KI506-1 as an accessory to receive cannula and bottle.**

†Purchase starter kit separately S0316-1.

‡Will no longer have air outlet.

‡‡Will need to purchase Nebulizer PN R0132.

CONTACT: For technical questions or concerns, contact Technical Service:

USA: 800-482-2473

www.cairemedical.com

Europe: +44 (0) 118 936 7060

www.cairemedical.com

For ordering information or general inquires, contact Customer Service:

USA: 800-482-2473

www.cairemedical.com

Europe: +44 (0) 118 936 7060

www.cairemedical.com

Copyright © 2018 CAIRE Inc. CAIRE Inc. reserves the right to discontinue its products, or change the prices, materials, equipment, quality, descriptions, specifications and/or processes to its products at any time without prior notice and with no further obligation or consequence. All rights not expressly stated herein are reserved by us, as applicable.



SERVICE BULLETIN

PN: 21360547

DATE: 1/3/2019

MODEL: Companion 5 Oxygen Concentrator

ISSUE: Companion 5 Hose Clamp Change

Effective Dec. 17th, 2018 all CAIRE Companion 5 Oxygen Concentrators are now being manufactured using new hose clamps (CAIRE PN CL036-1 and 20835811). The new ratcheting clamp (PN CL036-1) is meant to be taken on and off for service and can be re-used. The pinch clamp (CAIRE PN 20835811) does not need to be removed for service and if needed to, it will need to be replaced. The previous design clamps required special pliers (CAIRE PN 20852060) to remove for service work. See figures below for updated part numbers and pictures.

Figure 3 indicates the removal of the ratcheting clamp. Each side of the ratchet mechanism can be grasped with a separate set of standard pliers, and the two sections of the clamp moved opposite one another until the clamp releases.

It is recommended to only remove and re-install the ratcheting clamp if possible, but if a pinch clamp needs to be replaced (to repair a damaged section of tubing, for example) a pinch clamp tool is required. A pinch clamp tool can be sourced from various hardware supply companies. See figures 5 and 6 below that illustrate how to apply an oetiker clamp.

Fig. 1: New Ratcheting Clamp PN: CL036-1

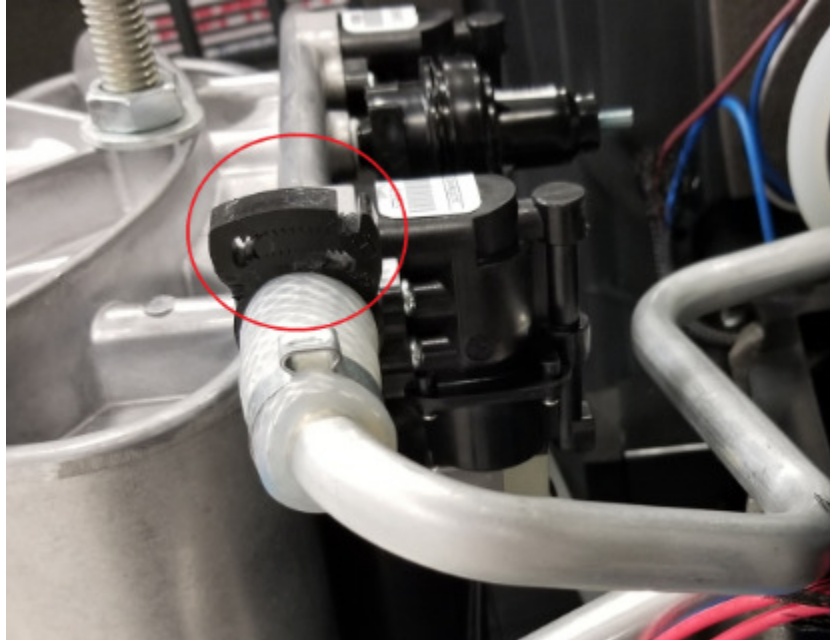


Fig. 2: New Style Pinch Clamp PN: 20835811

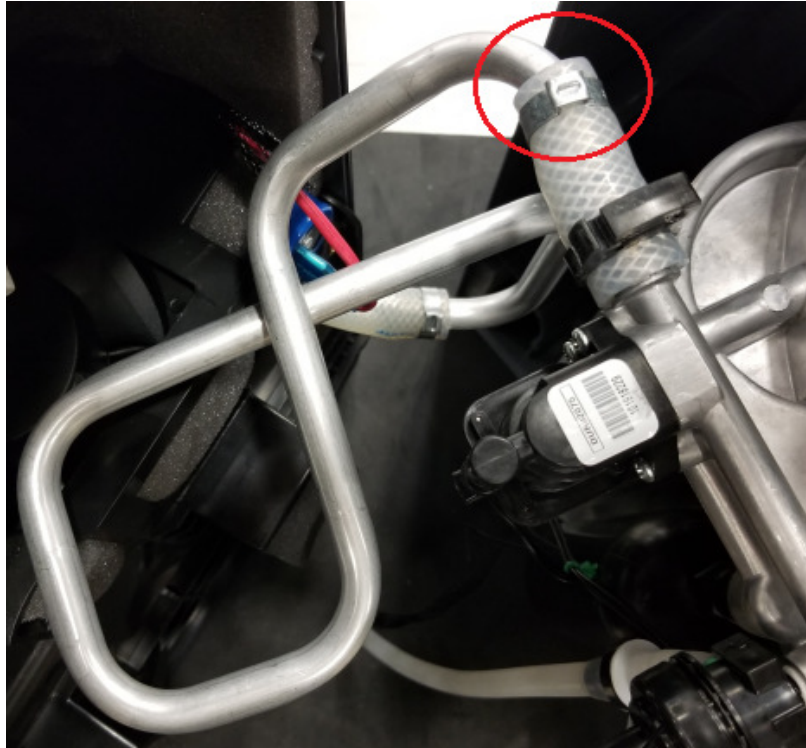


Fig. 3: Ratcheting Clamp Removal

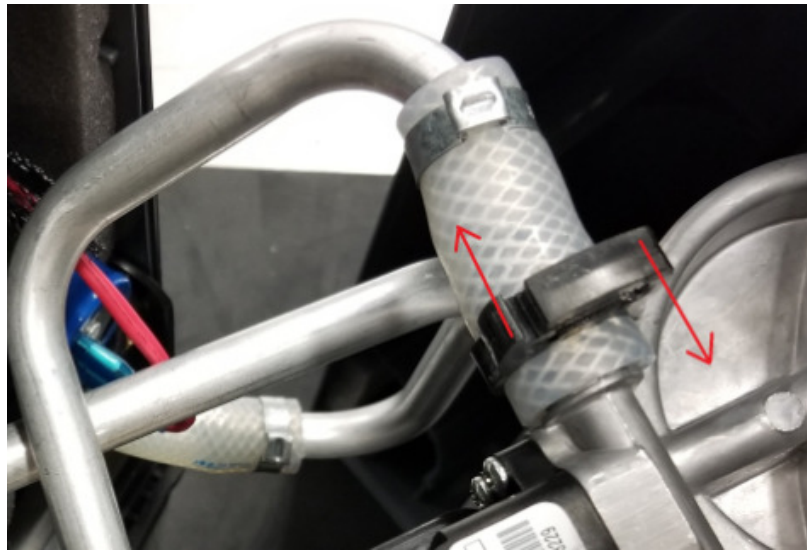


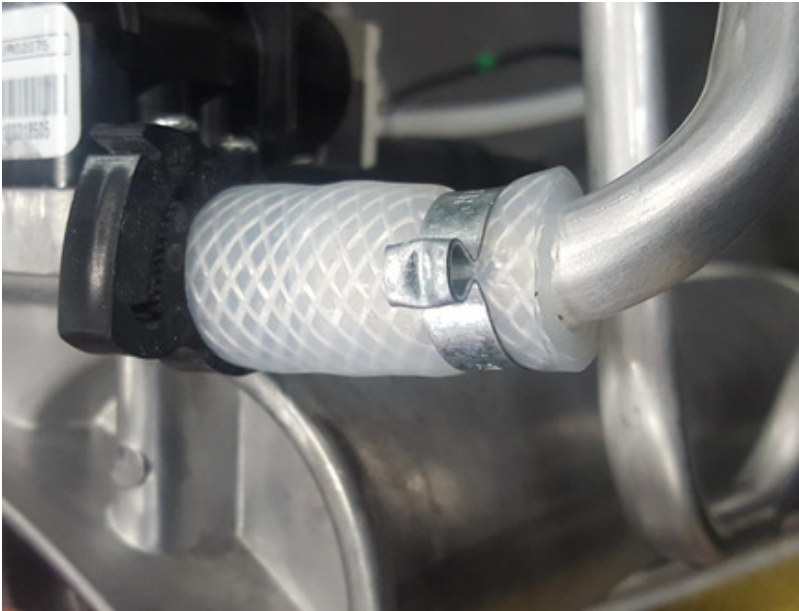
Fig. 4: Previous Design Clamp Removal



Fig. 5: Crimping Pinch Clamp



Fig. 6: Pinch Clamp installed



CONTACT: For technical questions or concerns, contact Technical Service:

USA: 800-482-2473

www.cairemedical.com

Europe: +44 (0) 118 936 7060

www.cairemedical.com

For ordering information or general inquires, contact Customer Service:

USA: 800-482-2473

www.cairemedical.com

Europe: +44 (0) 118 936 7060

www.cairemedical.com

Copyright © 2018 CAIRE Inc. CAIRE Inc. reserves the right to discontinue its products, or change the prices, materials, equipment, quality, descriptions, specifications and/or processes to its products at any time without prior notice and with no further obligation or consequence. All rights not expressly stated herein are reserved by us, as applicable.