



# *SERVICE BULLETIN*

PN: 21336031

**DATE:** 10/24/18

**MODEL:** SeQual Eclipse 5

**ISSUE:** Instructions for proper use of AC power supply

This bulletin will serve as a reminder for the proper procedures in using the new 2 prong power supply for the Eclipse 5. Along with this bulletin, you may also reference pages 5 and 14 of the Eclipse 5 User Manual (CAIRE PN: 21182453).

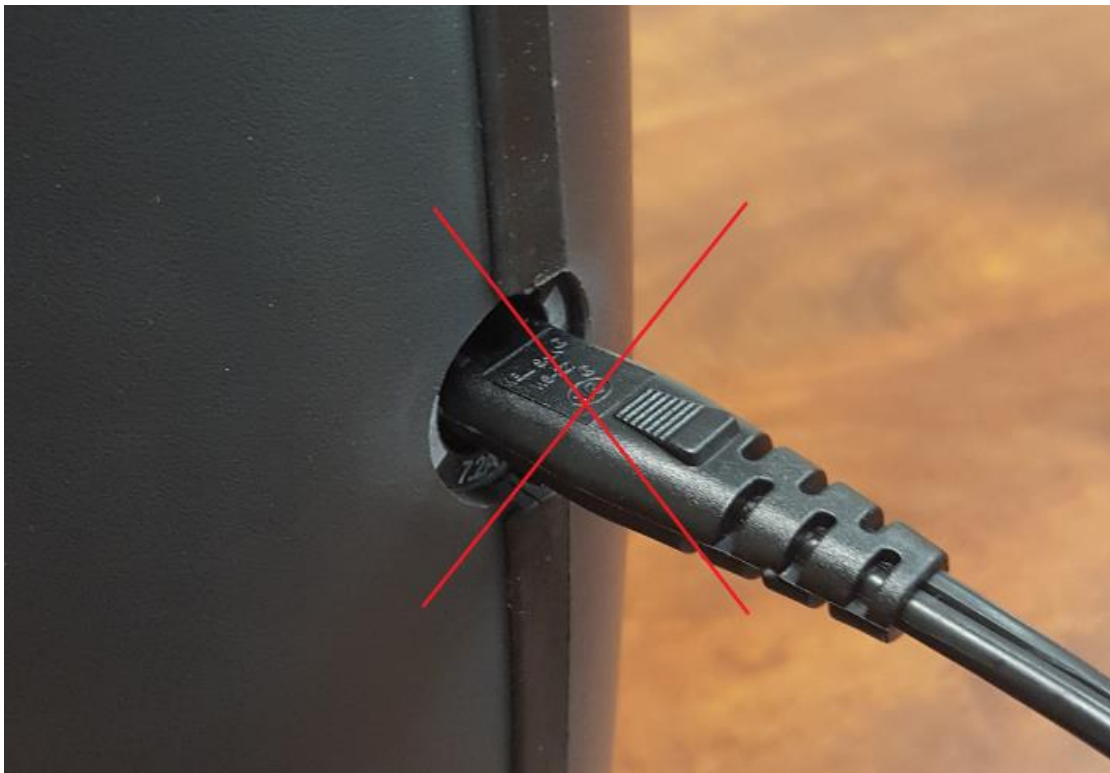
Step 1: Insert the AC power supply cord securely into the External Power Receptacle on the right side of the device.



Step 2: If your power supply has three pins, plug the AC power cord into a grounded AC outlet. If your supply has a two pin plug, plug the AC cord into a grounded or non-grounded AC outlet.



**NOTE: The AC power cord cannot plug directly into Power Receptacle on side of the Eclipse 5. Doing so will damage the unit.**



**CONTACT:** For technical questions or concerns, contact Technical Service:

USA: 800-482-2473

[www.cairemedical.com](http://www.cairemedical.com)

Europe: +44 (0) 118 936 7060

[www.cairemedical.com](http://www.cairemedical.com)

For ordering information or general inquires, contact Customer Service:

USA: 800-482-2473

[www.cairemedical.com](http://www.cairemedical.com)

Europe: +44 (0) 118 936 7060

[www.cairemedical.com](http://www.cairemedical.com)

*Copyright © 2018 CAIRE Inc. CAIRE Inc. reserves the right to discontinue its products, or change the prices, materials, equipment, quality, descriptions, specifications and/or processes to its products at any time without prior notice and with no further obligation or consequence. All rights not expressly stated herein are reserved by us, as applicable.*