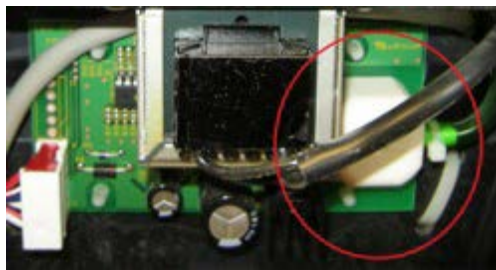


August/September 2016 Med Tips

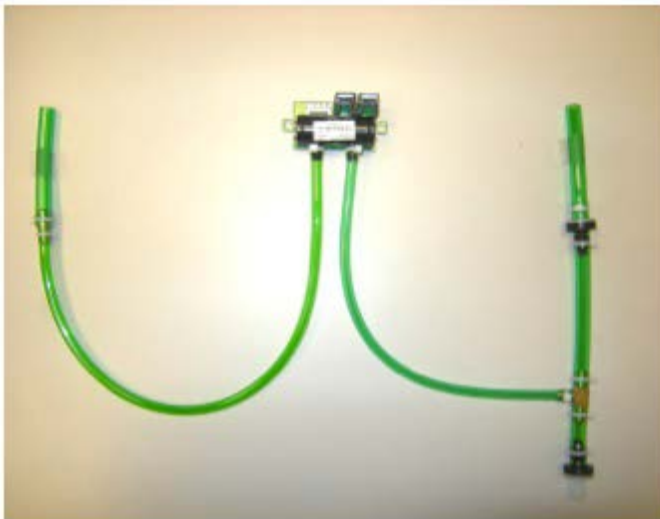
Helpful Hints and FAQs

Replacing the AirSep® NewLife® & Intensity O₂ Ceramic Monitor Circuit Boards with Ultrasonic O₂ Boards

For older NewLife and Intensity units containing the ceramic sensor O₂ monitoring boards as shown below, part number CB005-5 O₂ monitoring boards are no longer available:



You will need to order part number K1366-1 Retrofit kit for NewLife units, or K1366-2 Retrofit kit for Intensity units. These kits will include the newer Ultrasonic O₂ board seen below, and necessary parts, and instructions needed for installation:



CB124-1 1



CB124-2

KI366-1 Retrofit kit, Ultrasonic O2 Board

<u>Verify kit received includes the following items:</u>		<u>Recommended Tools:</u>
(1) CB124-1	O2 monitor circuit board assembly	Slotted screwdriver
(2) HA075-1	Spacer	Philips screwdriver
(2) SC007-3	Screw	Wire Cutters
(3) TW001-4	Small tie wrap	Needle-nose pliers
(2) TW002-1	Large tie wrap	
(1) WH095-3	Main wire harness	
(1) HA088-1	Hardware for O2 light: lens (IL070-1), spacer (MI368-1), lock ring (HA087-1)	
(1) SVMP-004	Instructions for HA088-1	

KI366-2 Retrofit kit, Ultrasonic O2 Board, Intensity

<u>Verify kit received includes the following items:</u>		<u>Recommended Tools:</u>
(1) CB124-2	O2 monitor circuit board assembly	Slotted screwdriver
(2) HA075-1	Spacer	Philips screwdriver
(2) SC007-3	Screw	Wire Cutters
(1) TW001-4	Small tie wrap	Needle-nose pliers
(2) TW002-1	Large tie wrap	
(1) WH095-3	Main wire harness	
(1) HA088-1	Hardware for O2 light: lens (IL070-1), spacer (MI368-1), lock ring (HA087-1)	
(1) SVMP-004	Instructions for HA088-1	

HELIOS™ Portable Label Updates

Revising the H300 and H850 warning labels B-700856-00 and 10000708 and creating new part numbers 21033263 and 21033262 respectively.

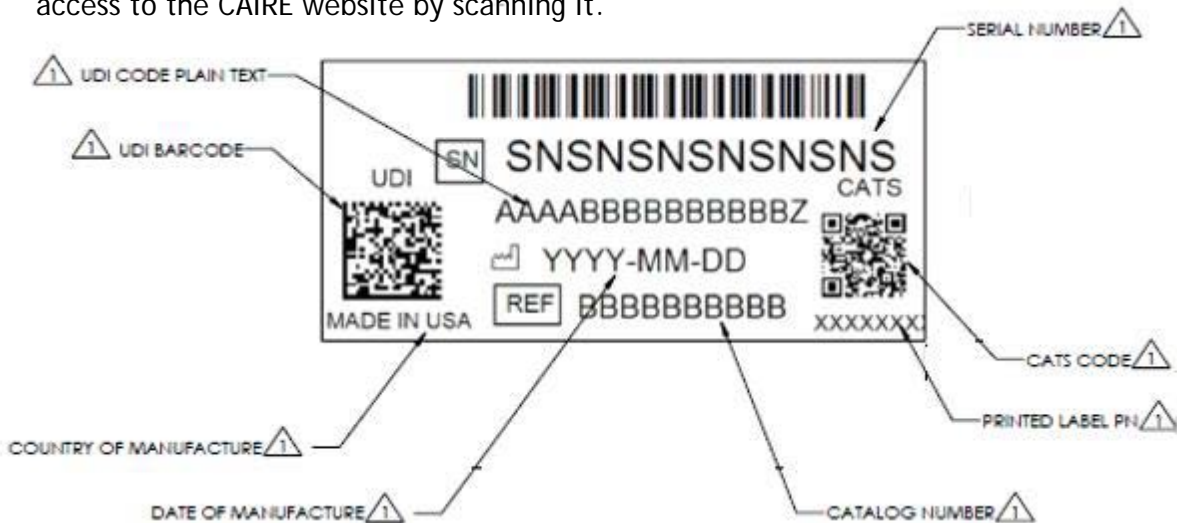
This change is going from text to symbolic. This change is being done to support the FDA mandated Unique Device Indicator labeling requirements.

Unique Device Indicator (UDI) label

Effective 8/29/2016 all CAIRE® liquid oxygen reservoirs and portables will be manufactured with a Unique Device Indicator (UDI) label. The UDI is a code that is displayed in both human readable (plain text) and machine readable (AIDC) formats. The UDI will be made up of two parts - the Device Identifier and Product Identifier:

- Device Identifier
 - Company
 - Model number
- Product Identifier
 - Serial number
 - Manufacture Date

Please note the "CATS CODE" QR barcode will provide customers with easy access to the CAIRE website by scanning it.



Installing AirSep® Freestyle® (internal battery) Power Input

Recommended Tools:

1EA #2 Phillips Head Screwdriver

1EA Flat Head Screwdriver

1EA Needle Nose Pliers

1EA Wire Cutters

Zip Ties or "Tie Wrap" (Part Number: TW011-1)



13mm Wrench



Part Number CN089-1



Part Number # WH101-1S



ESD Mat

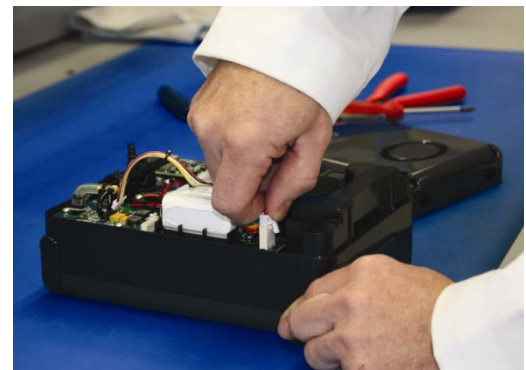
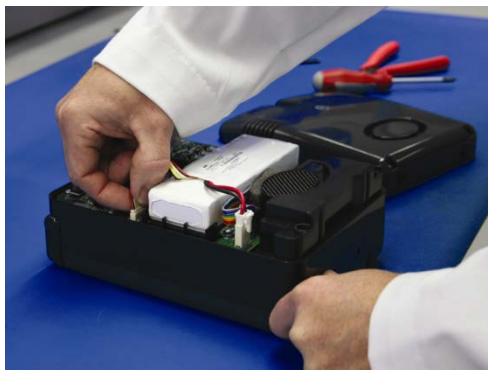
Step 1: Remove Front and Back Cover



Remove front and back cover.

Remove (3) screws front and (4) screws back cover.

Step 2: Disconnect Power Supply and Remove Battery



Remove battery Fuel Gauge Connector
Battery Power Connector

Remove

Step 3: Remove Power Input Harness



Disconnect Power
Receptacle Connector



Use 13 mm wrench to
remove harness



Remove harness

Step 4: Install New Harness



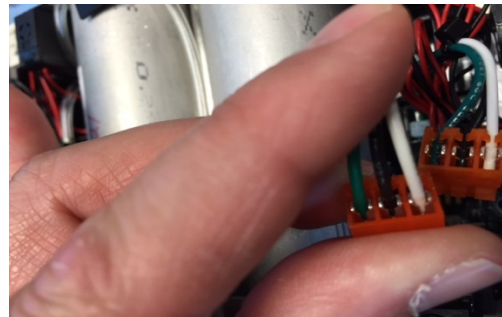
Install New Harness



Install Hex Nut



Use 13 mm wrench to attach harness to
Freestyle



Install wire into connector



Push wire in connector. Connector is self-stripping. Screwdriver may be needed to push wire in connector.

Step 5: Reinstall Power Receptacle Connector, battery connections and cases.

Note: Unit will be in sleep mode; plug unit into wall outlet and turn unit on to wake unit.

Product Information

The New AirSep® FreeStyle®

CAIRE introduces updates to the original lightweight portable oxygen concentrator — the AirSep® FreeStyle®. The new design adds features and benefits that will not only make the device more appealing to patients, but even more reliable for providers.

New Power Supply Connection

Completely re-designed connector featuring multi-directional installation with no pins to align and no release button to press is simpler than ever to use. Robust metal connection points ensure the highest durability of both the power supply and FreeStyle for patients and provider alike.

New User-Replaceable Battery

Swap battery packs on the go instead of waiting to re-charge an internal battery or having to add heavy external batteries. The battery pack will re-charge anytime AC or DC power is connected and is easily accessible from the front of the device.

Longer Battery Life

The new battery pack provides an additional 1 hour of duration at setting 2, providing up to 3 ½ hours with a single battery pack at setting 2.

New Color Scheme

New color scheme is more appealing and non-medical in appearance. The matte finish will help resist everyday scratches.



Don't Miss Out on our Upcoming Service Schools!

**CAIRE Service School Training Seminar
November 14 -18, 2016
At
Ball Ground, GA, United States**

CAIRE offers Service Schools covering both LOX and Concentrator lines.

Each class is a comprehensive program that focuses on the technical and service aspects of the CAIRE family products. Class time is divided between lecture and hands-on workshops. The seminars will help the student develop a better understanding of how liquid oxygen equipment or concentrators work, how to identify the symptoms and causes of potential problems and how to use the technical information that is available in the Technical Manuals. Attendance at CAIRE's Service Schools is free, but registration is mandatory. Registration forms must be received one week prior to the start of the class in order to guarantee availability and materials.

Concentrator Service School topics include:

- Concentrator hazards and safety precautions
- Principles of pressure, flow and saturation
- Functions of the major components of a portable/stationary concentrator
- Theory of operation
- Hands-on experience with the concentrators
- Set up and use of test equipment
- Troubleshooting, repair and performance verification/testing procedures with hands-on experience

LOX Service School topics include:

- Liquid oxygen (LOX) hazards and safety precautions
- Principles of pressure, flow and liquid oxygen saturation
- Functions of the major components of a liquid oxygen system
- HELiOS system theory of operation
- Reservoir and portable filling procedures with hands-on experience
- Set up and use of test equipment
- Troubleshooting, repair and performance verification/testing procedures with hands-on experience

2016 Training Dates

November 14 -18, 2016

Concentrator Training: November 14, 15 & 16 in Ball Ground, GA

LOX Training: November 17 & 18 in Ball Ground, GA

To register for Service School, please email:

techservice.usa@chartindustries.com for USA Training

jim.gibson@chartindustries.com for European Training

2016 Trade Shows

Show	Date	Location
Medtrade Fall	November 1-3, 2016	Atlanta, GA
Medica	November 14-17, 2016	Dusseldorf, GER Booth 11C67

PLEASE CONSULT THE APPLICABLE PRODUCT INSTRUCTIONS FOR USE FOR PRODUCT INDICATIONS, CONTRAINDICATIONS, WARNINGS, PRECAUTIONS, AND DETAILED SAFETY INFORMATION.