

Having trouble viewing this email? [Click here](#)

Hi, just a reminder that you're receiving this email because you have expressed an interest in Chart SeQual Technologies Inc. Don't forget to add taylor.erwin@chartindustries.com to your address book so we'll be sure to land in your inbox.

You may [unsubscribe](#) if you no longer wish to receive our emails.



CAIRE®

A Chart Industries Company

AirSep®  SeQual®

www.CAIREmedical.com

Med Tips

In This Issue

[Product Information](#)
[Helpful Hints / FAQs](#)
[Service Schools & Tradeshow](#)
[Contact Us](#)

PDF Version

[View Med Tips in PDF, click here.](#)

Join Our List

[Join Our Mailing List!](#)

NEW!!

WELCOME

Welcome New Customers!

Welcome to CAIRE's Med Tips. The CAIRE Med Tips are sent out on the first business month and contain important product updates and troubleshooting information for respiratory products. We are excited to now include our valued AirSep customers in our distribution.

If you have a coworker whom you would like us to add to our distribution list, please email directly to this email and our Marketing Department will fulfill your request. Like to be removed, you may unsubscribe via the hot link at the bottom of this email, or respond directly to this email.

CAIRE has received enormous feedback regarding the value of this newsletter and that you join us each month. If you would like to view any of our past Med Tips, please click the link below to be directed to our archive on our CAIRE Medical website.

LINK BELOW TO BE DIRECTED TO OUR ARCHIVE ON OUR CAIRE MEDICAL WEBSITE.

http://www.cairemedical.com/Support/Med_Tips.aspx

PRODUCT INFORMATION

New Shipping Policy for Lithium Ion Batteries

Starting January 1st, Chart Industries will adopt a new shipping policy for lithium response to upcoming regulations. Upon initiating the RMA process through Custo customers returning lithium ion batteries to the Chart facility will be given specif regarding proper shipping procedure and packaging.

Further details and information will be included in next month's Med Tips.

Companion Reservoir Contents Indicators

Each size of the Companion reservoir has a unique contents indicator. The gauges interchanged between sizes. Be sure to order the appropriate contents indicator f reservoir. The table below may be used as a guideline for ordering.

Companion Reservoir	Contents Indicator
C21	B-775845-SV
C31	B-775846-SV
C41	B-775847-SV



VisionAire 2™ : Setting the Standard in Reducing Energy Costs and Low Power (

AirSep's VisionAire™ 2 is the latest product due for release through Chart's CAIRE Medical. With the first production run of 115V/60 Hz units scheduled (at press time) for the week of November 26, the 230V/50 Hz and 60 Hz units are not far behind with the timetable for those units preliminarily scheduled for a January 2013 release.

preliminarily scheduled for a January 2013 release.

The VisionAire 2 concentrators are equipped as monitored units and offer providers the advantage of a low flow unit to put into pediatric use in infant wards in institutional settings, in home care environments, and even in emergency and disaster-relief settings. The standard flowmeter has 1/8 LPM increments ranging from 1/8 LPM up to 2 LPM and CCM markings for easy conversion. The alternative flowmeter has 1/10 increments ranging from .10 LPM up to 1.0 LPM.

The main advantages of the VisionAire 2 is its significantly reduced power consumption compared with standard 5 LPM concentrators as well as the low weight (just 30 lb [13.6 kg]) and virtually silent running at 40 dBA.



Like all VisionAire-series compact concentrators, the intuitive six-alarm system make troubleshooting easier in the field. Please use the chart below as a guide.

Condition	No Power	Low O ₂	Low Pressure	High Pressure	High Temperature
Audible Alarm	One Beep	Two Beeps	Three Beeps	Four Beeps	Five Beeps

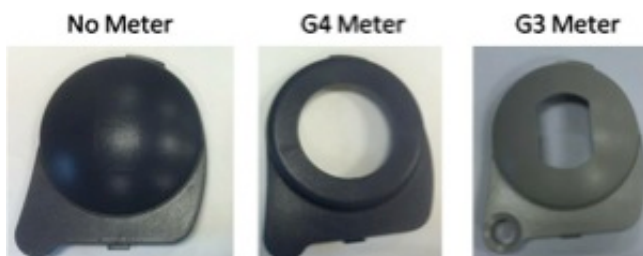
Sprint/Stroller Hard Case Dome Covers

The Stroller dome cover is the part of the hard case that surrounds the contents of the stroller.

The Eclipse dome cover is the part of the main case that protects the concentrator. The meter style (Gen 3 & Gen 4) has a different dome cover. Remember, when upgrading from a G3 meter to a G4 meter, a new dome cover must also be purchased.

The table below may be used as a guideline for ordering replacement dome cover

	Blue	Light Gray	Dark Gray
No Meter	11199511	11199570	11199545
Gen 3 Meter	10815801	10941744	10815810
Gen 4 Meter	12932526	12932542	12932534



Eclipse ESD Protections

The Eclipse concentrator contains electrostatic sensitive components. CAIRE recommends the device be opened or handled only at a static free workstation. Do not remove the Eclipse concentrator without ESD (electrostatic discharge) protection. An ESD mat should be used any time the Eclipse is opened, including when performing preventative maintenance procedures.



Note: ESD mats can be purchased through most electronic stores or websites.

Concentrator Membrane Panels

If the keypad has malfunctioned on an Eclipse or Integra concentrator, the membrane panel can be ordered as a replacement part. The membrane panel consists of the keypad and a cable that connects to the main circuit board. The keypad is shipped with an adhesive strip that is used to attach to the case of the concentrator. Use the table below as a guideline for ordering replacement membrane panels for any CoQual concentrator.

replacement membrane panels for any Sequat concentrator.

Concentrator	Membrane Panel
Eclipse 1	SP7025-SEQ
Eclipse 2	SP3972-SEQ
Eclipse 3	SP4225-SEQ
Integra E-Z	3489-SEQ



FreeStyle™ 5 Joins Our Lightweight POC Family

The long-awaited FreeStyle™ 5 by AirSep is expected to strengthen the growing arsenal of Chart's CAIRE portable oxygen concentrator manufacturing. Positioned in the marketplace as the unit to respond to those "higher-capacity patient needs," the POC includes 5 settings with robust oxygen p_i capability for meeting advanced requirements. The unit's sensitivity and speed of ensures that all of the oxygen is delivered efficiently regardless of breathing rate.

At this time, sales representatives have been receiving demonstration units to begin showing this 6.2 lb (2.8 kg) portable concentrator to providers in their territories, and worldwide demand for the product is expected to be significant where non-delivery systems are considered optimal.

Note that the AirBelt™ for extended battery duration is compatible with the new FreeStyle 5, as well as with the 3-setting FreeStyle and the Focus POC, making for a highly versatile product for equipment providers in managing their POC and accessory inventory.

Both FreeStyle 5 and the ultra lightweight Focus™ POCs have also recently received the FAA's approval for onboard, in-flight use, thereby making all AirSep-brand portable oxygen concentrators, the most lightweight on the market, totally travel-ready for your flying respiratory patients.





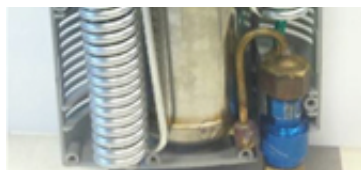
HELPFUL HINTS / FAQs

HELiOS Marathon Warming Coil Assembly

Q: I just ordered replacement warming coils for the H850 Marathon portable. The are a different alignment than the coils that were originally on the Marathon. The not connect and cannot be installed. Did I order the wrong part?

A: The alignment of the warming coil was changed on all H850 portables manufac December 4, 2008 (SN B-08338003). The figure below illustrates the change in coi Note the center piece that goes across the bottle opens in a different direction in The previous style (pictured on the right below), contained two nuts and ferrule c were both located on the same side of the coil assembly. In contrast, the current has one nut and ferrule connect on each side.





**Current
Coil Alignment**



**Previous Coil Alignment
Before Dec. 4 2008**

The replacement coil assembly for the H850 may be ordered using part number #1. This assembly is the current coil alignment and contains the nuts and ferrules already installed. The previous coil design before 2008 is no longer available, so the correct part was provided in response to the question above.

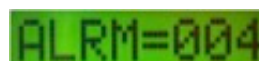
The two alignments of coil can be used interchangeably and the current service procedure can be used as a replacement on older H850 units. However, in order to install the replacement coil, the liquid withdrawal tube will need to be bent and realigned.

If you are replacing the warming coils on an older H850, as described above, please contact Technical Support after receiving the new coil assembly. Technical Support can guide you through the procedure for bending and realigning the liquid withdrawal tube to fit the current coil.

Eclipse Alarm Codes Quick Reference Table

One of the most useful steps in troubleshooting an Eclipse concentrator is to retrieve an alarm code. Any time the Eclipse produces an audible or visual (red or yellow light) alarm, the Eclipse concentrator will register a code to tell you exactly why the alarm has been activated.

The alarm code is accessed by pressing the "no smoking" symbol on the left side of the Eclipse 3 panel one time while the Eclipse is running. This is the screenshot of the Eclipse 3 display when an alarm code is retrieved.



Below is a quick reference table outlining what each alarm code means.

The Eclipse technical manual has more detailed information on the codes and the troubleshooting steps. You may also contact Technical Support with questions on alarm codes.

E1/E2 Code	Eclipse 3 Code	Alarm Condition
00	000	No Alarm
01	001	Cannot Charge Battery Cartridge
02	002	Warm (Overheating) Battery Cartridge
04	004	*Oxygen Concentration < 70%

08	008	*Oxygen Concentration < 85%
10	010	Low Battery Cartridge
20	020	Low or Blocked Flow Rates
-	100	One-Wire Communication Loss (Simi
-	200	No Breath Detected in Pulse M

**Note: The codes for low oxygen concentration (04/08, 004/008) will register while the machine is in warm-up period. Make sure you wait at least 5 minutes before retrieving these codes. If either of them is present when the green light is still illuminated, then the Eclipse is still warming up.*

ACCESSORIES

Cannulas Available from CAIRE

Below is a comprehensive list of all of the nasal cannulas CAIRE offers. This list includes a standard nasal cannula for concentrators and liquid oxygen, and four models of dual lumen cannulas specifically designed for the HELIOS portables.



Dual Lumen Cannula:
Provides sense and delivery in both nostrils with a divided tube.

#6-778058-00	5 ft (1.5 m)
#6-778057-00	7 ft (2.1 m)



Dual Lumen Cannula:
Provides sense and delivery in separate nostrils. Oxygen only delivered through 1 nostril.

#B-701931-00	4 ft (1.2 m)
#B-701930-00	7 ft (2.1 m)



Dual Lumen Cannula:
Provides sense and delivery in both nostrils with a single tube.

#20574985	4 ft (1.2 m)
#20574977	5 ft (1.5 m)
#20574978	7 ft (2.1 m)



Dual Lumen Cannula:
Provides sense and delivery in both nostrils using two tubes.

#10035468	5 ft (1.5 m)
#10035467	7 ft (2.1 m)



Standard Nasal Cannula:
Single lumen cannula for continuous flow use on all products except HELIOS portables

#5408-SEQ	7 ft (2.1 m)
-----------	--------------

AirSERVICE SCHOOLS & TRADESHOWS

Mark Your Calendars for our Upcoming 2013 Service Schools!

USA

Concentrator Training: February 26, 27, 28 in Denver, CO

LOX Training: March 5 & 6 in Denver, CO

Concentrator Training: June 4, 5, 6 in Ball Ground, GA

LOX Training: June 11 & 12 in Ball Ground GA

****Ball Ground trainings include a tour of our CAIRE and SeQual manufacturing facility**

Concentrator Training: September 10, 11, 12 in Buffalo, NY

LOX Training: September 17 & 18 in Buffalo NY

****Buffalo trainings include a tour of the manufacturing facility for AirSep products**

Concentrator Training: November 5, 6, 7 in Ball Ground, GA

LOX Training: November 12 & 13 in Ball Ground, GA

****Ball Ground trainings include a tour of our CAIRE and SeQual manufacturing facility**

For additional details and registration information about these trainings, please visit the ["Service Schools"](#) tab of our website.

Europe

German LOX Product Training: February 6 & 7 in Wuppertal, Germany

Italian LOX Product Training: February 13 & 14 in Padova, Italy

German Concentrator Training: March 5, 6, 7 in Wuppertal, Germany

French LOX Product Training: March 6 & 7 in Fonsorbes, France

French Concentrator Product Training: March 26, 27, 28 in Fonsorbes, France

English LOX Product Training: April 17 & 18 in Wuppertal, Germany

English LOX Product Training: April 24 & 25 in Wokingham, UK

Italian LOX Product Training: May 8 & 9 in Padova, Italy

English Concentrator Training: May 14, 15, 16 in Wuppertal, Germany

Spanish LOX Product Training: June 5 & 6 in Fonsorbes, France

English Concentrator Training: June 11, 12, 13 in Wokingham, UK

Spanish Concentrator Training: June 25, 26, 27 in Fonsorbes, France

German LOX Product Training: July 3 & 4 in Wuppertal, Germany

French LOX Product Training: September 11 & 12 in Fonsorbes, France

French Concentrator Training: September 24, 25, 26 in Fonsorbes, France

German Concentrator Training: October 8, 9, 10 in Wuppertal, Germany

Italian LOX Product Training: October 9 & 10 in Padova, Italy

To register or request more information on the 2013 European trainings, please contact [Gibson](#).

CONTACT US

For ordering information, contact Customer Service:

United Kingdom	+44 (0) 1189 367060
France	+33 (0) 561 089 858
Germany	+49 (0) 202 739 55420
Italy	+39 049 879 9601
	customerservice.europe@chartindustries.com
Australia/New Zealand	+61 2 9749 4333
Asia/Pac Rim	770.721.7759
	customerservice.australia@chartindustries.com
The Americas	770.721.7759
US Toll-Free	800.482.2473
	customerservice.usa@chartindustries.com

For technical information, contact Technical Service:

United Kingdom	+44 (0) 1189 367060
France	+33 (0) 561 089 858
Germany	+49 (0) 202 739 55420
Italy	+39 049 879 9160
	techservice.europe@chartindustries.com
Asia/Pac Rim	+61 2 9749 4333
	techservice.asia@chartindustries.com
The Americas	770.721.7759
	techservice.usa@chartindustries.com
US Toll-Free	800.482.2473
	techservice.usa@chartindustries.com

[Forward email](#)



Try it FREE today.

This email was sent to snystrom@sequal.com by taylor.erwin@chartindustries.com | [Update Profile/Email Address](#) | Instant removal with [SafeUnsubscribe™](#) | [Privacy Policy](#).

Chart Industries | 2200 Airport Industrial Dr. | Ste. 500 | Ball Ground | GA | 30107