

Having trouble viewing this email? [Click here](#)

Hi, just a reminder that you're receiving this email because you have expressed an interest in Chart SeQual Technologies Inc. Don't forget to add taylor.erwin@chartindustries.com to your address book so we'll be sure to land in your inbox.

You may [unsubscribe](#) if you no longer wish to receive our emails.



CAIRE®

A Chart Industries Company

AirSep®  SeQual®

www.CAIREmedical.com

Med Tips

In This Issue

[Product Information](#)
[Helpful Hints / FAQs](#)
[Service Schools & Tradeshow](#)
[Contact Us](#)

PDF Version

To view Med Tips in PDF, [click here.](#)

Join Our List

[Join Our Mailing List!](#)

February 2013

NEW!!

Patient Spotlight

Dear CAIRE,

I love my Marathon. His name is Oscar. The only time I'm without Oscar is when I'm at home and connected directly to the Helios Reservoir. Otherwise we are like Siamese twins -- connected. I am so happy I am able to use liquid O2 because I don't know what I'd do if I had to lift tanks.

Smiles,
Bunny

A big thank you to Bunny for sharing their story with us!

If you know a patient who would be interested in sharing their story, please reply to this email!

PRODUCT INFORMATION

New Packaging for Liquid Oxygen Products

CAIRE is pleased to announce the implementation of new packaging for liquid oxygen products. The new packaging will be similar to the current Liberator configuration, in that it consists of a 2-part, telescoping box. The material of the new packaging is of a corrugate, heavier-weight paper material, which will increase the durability of the shipping materials and in turn, better protect the integrity of liquid oxygen products when shipping. CAIRE has conducted a series of ship tests using UPS ground and air, as well as certified lab ISTA 1A & 3A testing, which has proven the ability of this new packaging material to protect the product in both individual shipments and palletized shipments.

Through implementation of this new packaging, it will be easier to order shipping materials for liquid oxygen units. There will require fewer part numbers and liquid oxygen products will no longer require molded pulp materials or foam inserts for shipping.

Implementation will begin over the next month, starting with the HELiOS models, Lib 60, and HELiOS Service Box Kits. The Companion and remaining Lib models (excluding Lib 10 & 20) will follow shortly.

Stroller Soft Cases

Use the table below as a guideline for ordering replacement soft case assemblies for the CAIRE Stroller and Hi-Flow Stroller. The soft case is available in both black and gray.

Model	Gray Soft Case	Black Soft Case
Top Fill, Meter	14507232S	14122404S
Top Fill, Scale	14507241S	14122412S
Side Fill, Meter	14507259S	14122421S
Side Fill, Scale	14507224S	14122447S

Presently, all new Hi-Flow Strollers (0-15 LPM) come with the soft case and Stroller units (0-6 LPM) have the option to be ordered with a soft or hard case.

The soft case is easily interchangeable with the hard case on some older Stroller models. The soft case can be installed on:

- Gen 4 Stroller with existing hard case
- Gen 3 Stroller with existing hard case that has been upgraded to a G4 meter



AirSep VisionAire Serial Number Location & Humidifier Bottle Compartment

As of September 2012, the location of the serial number has changed on all VisionAire models. Previously, the serial number was located on the back case of the unit. Now, the serial number will be located on the top handle. This change will make the serial number more accessible for providers and technicians.

In conjunction with this change, the humidifier bottle compartment was enlarged. This allows for easier access and compatibility with a wider variety of bottles.

The pictures below illustrate these changes:





Previous Design



Current Design

SeQual Eclipse 3 Pulse Flow Features

The SeQual Eclipse has several unique features in pulse flow. These features allow it to be customized to fit the specific needs and comfort of individual patients. The Eclipse operates on a fixed bolus volume and is dosed in mL delivered per breath as shown below.



autoSAT Technology: AutoSAT™ detects changes in breathing rates and adjusts its oxygen output to maintain the pulse volume. As breath rate increases, the autoSAT feature ensures delivery of the set pulse dose on every breath; no skipped breaths or reduction in pulse size. The Eclipse automatically adjusts to oxygen demands, so that there is no limitation of available oxygen on pulse mode.

Adjustable Rise Time:

The rise time setting defines how quickly the set volume bolus (puff of air) is delivered in pulse mode. Designated in the Eclipse provider menu by "BOL=" the rise time can be set to SLOW, MED, or FAST. The factory default value is FAST and this should only be adjusted by a clinician for patient comfort.



Pulse Mode Sensitivity: Designated in the Eclipse provider menu by "PS=" and can be set to 1, 2, or 3. the pulse

sensitivity setting defines how easily pulse mode is activated by a patient breath. A setting of 1 is the most sensitive, and the setting of 3 is the least sensitive. The factory default value is 2 and this should only be adjusted by a clinician to meet patient requirements.



Battery Conservation: If no breath is detected for 15 seconds in pulse mode, the Eclipse will enter a battery conservation mode. It will deliver continuous flow at the last continuous flow setting for 15 seconds. Then, the continuous flow will stop and it will search for a breath for 15 seconds. The pattern of 15 seconds continuous flow and 15 seconds of no flow, searching for a breath, will continue until another breath is detected. This cycling helps to preserve the battery life if no breath is detected in pulse mode (cannula disconnected, patient breathing through mouth, etc.).

HELPFUL HINTS / FAQs

Proper Care of Companion Contents Gauge

It is critical that all Companion reservoir contents gauges are handled properly when cleaning and leak testing. Make sure to follow these guidelines when any solutions come in contact with a Companion contents indicator:

1. Use only the approved cleaning and disinfecting solutions below.

Approved Cleaning Solutions
Sporicidin Disinfectant Solution
Mild Dish Washing Detergent/Water Solution

Approved Disinfecting Solutions
Sporicidin Disinfectant Solution
Household Bleach (1:10 Dilution With Water), Freshly Made Within 24 Hours

2. Do not spray cleaners directly onto the gauge. Spray cleaners onto a cloth and then apply them using the cloth.

3. Use only SNOOP® liquid leak detector solution. This is the only approved leak detector that CAIRE has tested to be compatible with the contents indicators.
4. Make sure to thoroughly rinse the surface of the contents indicator with water after cleaning or leak testing.
5. Make sure to completely dry the surface of the contents indicator after rinsing.

Following these steps is important to prevent damage to the contents indicators and prolong their useful life.



AirSep FreeStyle Sleep Mode

Q: I just received a new AirSep FreeStyle. When I press the battery button it indicates some charge, but it doesn't start when I press one of the setting buttons. What is wrong?

A: The FreeStyle is shipped from the factory in sleep mode and must be connected to an external power source (AC or DC) to exit sleep mode. Once connected to a power source, the unit can be powered on by pressing once of the setting buttons.

Sleep mode will also occur if the internal battery has been disconnected.



SeQual Eclipse DC Power Hints

The SeQual Eclipse can be run continuously from DC power accessory outlets in vehicles. Below are some hints and guidelines to follow to ensure the best operation of the Eclipse in a vehicle:

- Always test the Eclipse's DC for proper function in a patient's vehicle before actual use to be sure that the DC outlets in the vehicle produce sufficient power to run the Eclipse.
- Always start the car and have the car running before plugging the Eclipse into the DC accessory outlet.
- Remove the battery cartridge when using in the car.
 - This is not a requirement for the Eclipse to run properly in the car. It is simply a suggestion to prevent the battery from draining if the car's electrical system fluctuates in power. DC power does not recharge the battery cartridge in an Eclipse 3. If the car's electrical system fluctuates temporarily and the voltage to the DC outlet drops below 11.5V, the Eclipse can switch over to battery power and drain the battery without the patient's knowledge. Removing the battery cartridge eliminates this possibility.
- Sit the Eclipse backwards in the seat to provide for adequate ventilation and air flow.
 - The air intake and exhaust are both on the back of the Eclipse. If they are blocked, the Eclipse can potentially overheat or produce low levels of oxygen.
- Use the accessory outlet closest to the car's battery.
 - As a general rule, the outlet closest to the car battery draws the most power and is least likely to have power fluctuations. If a patient is using the back seat outlet and having issues, suggest they try the front seat outlet closer to the car battery.
- If the Eclipse is experiencing problems running on DC power, plug the unit into a running car and power it on at the lowest setting (0.5 LPM). Gradually increase the setting to the patient's prescribed flow rate and verify that the Eclipse continues to run on DC power at each flow increase.
- Make sure the green status LED is lit on the DC power supply during operation.
 - This light indicates the power supply is receiving power from the DC outlet. If it is not lit, the

Eclipse will not be able to run on DC power.



ACCESSORIES

HELiOS Marathon Rolling Cart

The HELiOS Marathon (850) can be used with one of the portable rolling carts that CAIRE offers. The durable two-wheeled cart has adjustable Velcro straps that allow the unit to be secured in the cart.

Order this rolling cart using part number **#97404539**.



Eclipse™ Humidifier Bottle

The SeQual Eclipse provides continuous flow from 0.5-3.0 LPM. A humidifier bottle can be used for patients using the Eclipse as a stationary concentrator. CAIRE offers a humidifier kit used to attach a humidifier bottle to the Eclipse. The kit includes the strap and tubing only and does

not include a bottle.

CAIRE does not sell humidifier bottles, but recommends using the Salter Labs® Model 7600 humidifier bottle with the Eclipse.



- Be sure that a humidifier bottle is only used in continuous flow settings. It cannot be used in pulse mode.
- A humidifier bottle should be removed and cannot be used when the Eclipse is being transported or moved.

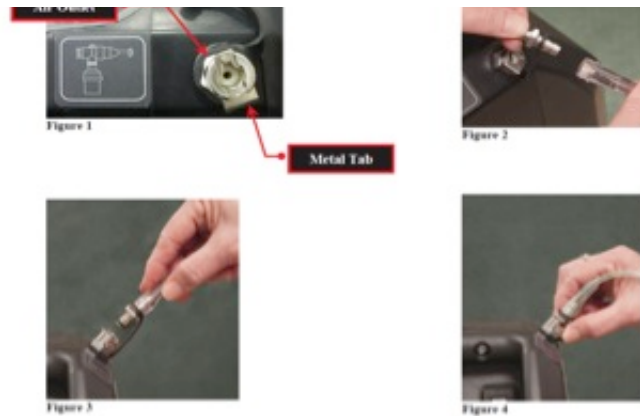
AirSep VisionAire Air Outlet Option

The AirSep VisionAire has the option of an air outlet. This is ideal for patients who require nebulizer treatment. A nebulizer can be connected directly to the air outlet and used in place of a medication compressor. Patients can continue to receive oxygen from the VisionAire while the air outlet is in use.



The nebulizer is connected via a quick-connect hose barb on the top, right-hand side of the unit. Compressed air is delivered at approximately 6.0 LPM and 12 psi (83 kPa). Below are visual instructions of how a nebulizer would be connected to the air outlet:





SERVICE SCHOOLS & TRADESHOWS

Mark Your Calendars for our Upcoming 2013 Service Schools!

USA

Concentrator Training: February 26, 27, 28 in Denver, CO
LOX Training: March 5 & 6 in Denver, CO

Concentrator Training: June 4, 5, 6 in Ball Ground, GA
LOX Training: June 11 & 12 in Ball Ground GA

**Ball Ground trainings include a tour of our CAIRE and SeQual manufacturing facility.

Concentrator Training: September 10, 11, 12 in Buffalo, NY

LOX Training: September 17 & 18 in Buffalo NY

**Buffalo trainings include a tour of the manufacturing facility for AirSep products.

Concentrator Training: November 5, 6, 7 in Ball Ground, GA

LOX Training: November 12 & 13 in Ball Ground, GA

**Ball Ground trainings include a tour of our CAIRE and SeQual manufacturing facility.

For additional details and registration information about these trainings, please visit the ["Events & Service Schools"](#) tab of our website.

Europe

German LOX Product Training: February 6 & 7 in

Wuppertal, Germany
Italian LOX Product Training: February 13 & 14 in
Padova, Italy
German Concentrator Training: March 5, 6, 7 in
Wuppertal, Germany
French LOX Product Training: March 6 & 7 in Fonsorbes,
France
French Concentrator Product Training: March 26, 27, 28
in Fonsorbes, France
English LOX Product Training: April 17 & 18 in Wuppertal,
Germany
English LOX Product Training: April 24 & 25 in
Wokingham, UK
Italian LOX Product Training: May 8 & 9 in Padova, Italy
English Concentrator Training: May 14, 15, 16 in
Wuppertal, Germany
Spanish LOX Product Training: June 5 & 6 in Fonsorbes,
France
English Concentrator Training: June 11, 12, 13 in
Wokingham, UK
Spanish Concentrator Training: June 25, 26, 27 in
Fonsorbes, France
German LOX Product Training: July 3 & 4 in Wuppertal,
Germany
French LOX Product Training: September 11 & 12 in
Fonsorbes, France
French Concentrator Training: September 24, 25, 26 in
Fonsorbes, France
German Concentrator Training: October 8, 9, 10 in
Wuppertal, Germany
Italian LOX Product Training: October 9 & 10 in Padova,
Italy

To register or request more information on the 2013
European trainings, please contact [Jim Gibson](#).

Tradeshows

This month we will be attending the following tradeshows.
We would love for you to stop by our booth!

CPLF

February 1-3
Lille, France
Stand #23

Handi Medical Supply Annual Education and Equipment Conference

February 15th
St. Paul, MN

CAMPS Annual Convention

February 26-27
Irvine, CA
Booth #32

Cambria-Somerset Council Annual Conference

February 27-March 1
Seven Springs, PA

FSRC Sunshine Seminar

February 27-march 1
Daytona, FL

MHA Business Summit

February 27- March 1
Las Vegas, NV
Booth #317

CONTACT US

For ordering information, contact Customer Service:

United Kingdom	+44 (0) 1189 367060
France	+33 (0) 561 089 858
Germany	+49 (0) 202 739 55420
Italy	+39 049 879 9601
	customerservice.europe@chartindustries.com
Australia/New Zealand	+61 2 9749 4333
Asia/Pac Rim	770.721.7759
	csasia@chartindustries.com
The Americas	770.721.7759
US Toll-Free	800.482.2473
	customerservice.usa@chartindustries.com

For technical information, contact Technical Service:

United Kingdom	+44 (0) 1189 367060
France	+33 (0) 561 089 858
Germany	+49 (0) 202 739 55420
Italy	+39 049 879 9160
	techservice.europe@chartindustries.com
Asia/Pac Rim	+61 2 9749 4333

Asia/Pac RMT	701.297.4943 techservice.asia@chartindustries.com
The Americas	770.721.7759 techservice.usa@chartindustries.com
US Toll-Free	800.482.2473 techservice.usa@chartindustries.com

[Forward email](#)



This email was sent to snystrom@sequal.com by taylor.erwin@chartindustries.com | [Update Profile/Email Address](#) | Instant removal with [SafeUnsubscribe™](#) | [Privacy Policy](#).

Chart Industries | 2200 Airport Industrial Dr. | Ste. 500 | Ball Ground | GA | 30107