

Having trouble viewing this email? [Click here](#)

Hi, just a reminder that you're receiving this email because you have expressed an interest in Chart SeQual Technologies Inc. Don't forget to add taylor.erwin@chartindustries.com to your address book so we'll be sure to land in your inbox.

You may [unsubscribe](#) if you no longer wish to receive our emails.



Med Tips

In This Issue

[Product Information](#)
[Helpful Hints / FAQs](#)
[Service Schools & Tradeshow](#)
[Contact Us](#)

PDF Version

To view Med Tips in PDF, [click here.](#)

Join Our List

[Join Our Mailing List!](#)

September 2012

NEW!!
 Patient Spotlight

George's Story



"I have been using the Spirit 300 for 3-1/2 years and love it! I am now able to lower my intake to 1 LPM (from 2)."

-George
 (name has been changed)

Thank you all for sharing your story!

***If you know of a patient who would like to be in one of our spotlights, please reply to this email!*

Clinical Application

CAIRE's Spirit Liquid Oxygen Portables are designed to maximize patient comfort, convenience, and ambulation.

All Spirit models have a built-in electronic Digital Oxygen Conserving Device (DOCD), which delivers a set pulse volume of gas with each breath. This set pulse volume of gas (bolus) is composed of a large volume during the first 1/3 of the inspiratory cycle, which allows the oxygen to reach the deepest portion of the lungs where the gas exchange occurs. This is important because oxygen provided in the later portion of the inspiratory cycle fills the bronchial tubes where it has limited therapeutic value (other than mixing with the gas that is in the lower portion of the lungs). The DOCD also extends oxygen duration per setting, while allowing the overall small size and light weight of the unit. The DOCD is powered by long-lasting dual C batteries, which are easy to change. The Spirits also contain ultra-sensitive breath detecting software that make these units a great fit for patients with a tracheostomy. The one, simple-to-use control knob is user-friendly for the patient, while the soft feature case promotes patient comfort and confidence.

Available in side and top fill options, the Spirits are easy to fill. The one step filling procedure is completed in under one minute, with no power requirements and no noise.

***If you have any questions regarding any of our products, please contact our US Technical Support Team or your local Sales Representative.

PRODUCT INFORMATION

Liberator Shrouds

Replacement shrouds are available for all models of Liberator reservoirs. The table below gives part numbers for the shrouds that are available.

Liberator	Shroud P/N	Shroud Color
Gen 2	CA403472	Brown
Gen 3	14231230	Blue
Gen 4	13726943	Blue
	14026877	Gray
	13693707	Green

If an meter upgrade is necessary or has previously been performed, a Generation 4 meter can be mounted in any of these shrouds. The shroud on the Liberator does not have to be updated with a Generation 4 shroud when upgrading a meter. A Gen 2 Shroud with a Gen 4 Meter installed is shown below.



Eclipse Handle

A replacement handle for the Eclipse is orderable using part number **#6963-SEQ**. This handle is compatible with all models of the Eclipse.

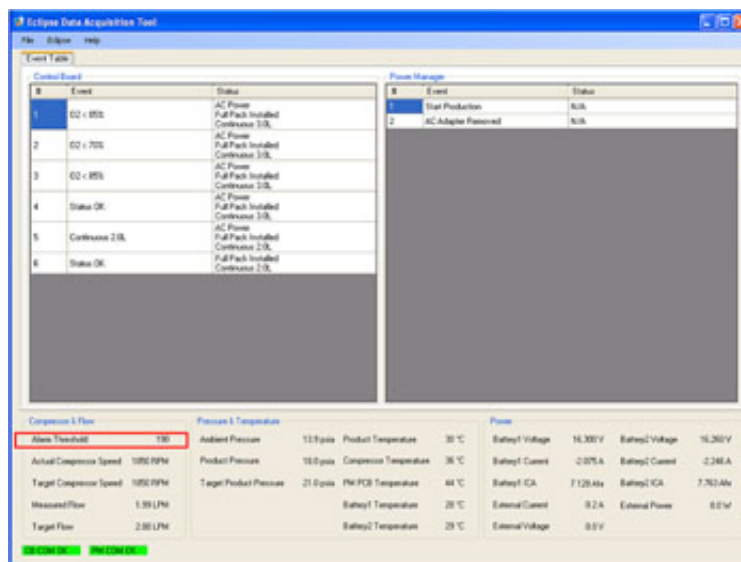




HELPFUL HINTS / FAQs

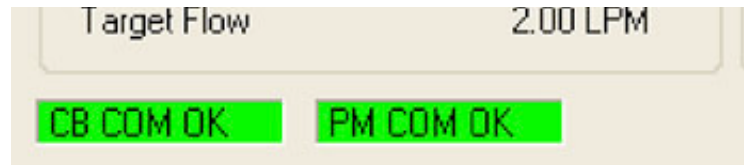
Oxygen Purity Readings On eDAT

The oxygen concentration (purity) that is being detected by the Eclipse can be read using the EDAT diagnostic software. The purity is found using the "Alarm Threshold" reading in the compressor and flow data box. This location of this reading is shown below in red.



Take the Alarm Threshold reading and divide it by 2. This will give you the oxygen purity (concentration) that is being detected by the Eclipse. In the example below, the alarm threshold is 190. This means that the oxygen purity being detected by this Eclipse is 95%.



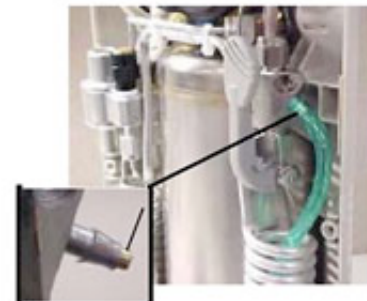


Checking this reading on EDAT will let you know if the Eclipse is alarming for low purity. This is not designed to take the place of an external O₂ analyzer, but is a very useful real-time diagnostic tool.

HELiOS Marathon Fill Times

Q: My HELiOS Marathon does not sound like it is filling. I have left it on the reservoir for about 1 minute and the contents gauge shows empty still. What is wrong?

A: Check to see if the Marathon has a vent restrictor. All Marathon units produced after November of 2007 were manufactured with a vent restrictor. You can identify these unit by either determining the manufacture date from the serial number, or by inspecting it for the green vent tube as shown below.



The purpose of this restriction is to slow the flow of liquid oxygen into the Marathon during a fill. This slower fill will aid to stabilize the pressure inside of the unit, and will allow it to be used properly almost immediately after a fill (within 15 minutes).

Units with a vent restriction will take **up to 4 minutes** to

units with a vent restrictor will take up to 110 seconds to completely fill. H850 units manufactured prior to 2007 would fill in 90 seconds or less.

The vent restrictor will change the sound of a fill in comparison to older units. It will be a much lighter sound than older units without the restrictor.

A vent restrictor can often be confused for a unit that is not filling. If a customer has previously used older Marathons that did not have the restrictor, they will notice the longer fill time and the muffled sound. Any time this complaint is received, CAIRE recommends attempting to fill the Marathon while timing the fill with a stopwatch to determine if the extended fill times are the issue.

Please contact Technical Support with any questions about the Marathon vent restrictor.

ACCESSORIES

HELiOS Marathon Backpack

A carrying bag is available for the HELiOS Marathon units. This bag is designed for proper ventilation and also contains a moisture pad to absorb any condensation produced during normal use. The bag has two adjustable straps that allow it to be used as a backpack. It also has the ability to be carried using a shoulder strap and a waist strap.

The Marathon backpack, shown below, can be ordered using part number **#069209**.



Eclipse 2+ Upgrade

The Eclipse 2+ upgrade is orderable using part number **#5978-SEQ**. This upgrade allows you to update an Eclipse 2 (Model 1000A) to have the most updated features that are available on the Eclipse 3. This allows providers to upgrade their Eclipse 2 inventory and is a low cost way to stock the latest equipment. Some of these updated features are:

- Three higher bolus settings on pulse flow - 128mL, 160mL, 192mL.
- Battery conservation when no breath is detected in pulse mode.
- LPM and mL display on the screen to distinguish between pulse and continuous flow.
- Settings to customize pulse dose to each individual patient
 - Rise time adjustment
 - Pulse sensitivity adjustment
 - Reduced alarms

When you order the upgrade kit, you will receive a yellow & red USB drive. These are the actual firmware upgrades. **You will need the EDAT software to perform any upgrades.** The red USB upgrade upgrades the Eclipse to the most current Eclipse 2 firmware. This must be performed on the Eclipse first before the Eclipse 2+ upgrade. The yellow USB is the actual Eclipse 2+ upgrade. It will give the Eclipse 2 the most updated features that are available on the current Eclipse 3. The kit will also come with a Eclipse 2+ sticker to place on the unit so you can identify it as an updated unit.



SERVICE SCHOOLS & TRADESHOWS

Mark Your Calendars for our Upcoming 2012 Service Schools!

SCHOOLS:**USA****Concentrator Technical Training in English**

November 5-6
Ball Ground, GA

LOX Technical Training in English

November 7-8
Ball Ground, Georgia

To register for 2012 US LOX Training, [download this form](#).

To register for 2012 US Concentrator Training, [download this form](#).

Europe**LOX Technical Training in German**

September 5 & 6
Wuppertal, Germany

LOX Technical Training in English

October 16 & 17
Wokingham, UK

LOX Technical Training in French

October 17 & 18
Fonsorbes, France

LOX Technical Training in Italian

November 14 & 15
Padova, Italy

For more information on the 2012 European trainings, please contact Jim Gibson at jim.gibson@chart-ind.com.

Tradeshows

We'll also be present at the following tradeshows this month, so feel free to stop at our booth! To find out more about any of the following shows, please click on its title and you will be directed to the show site.

ERS

September 1-5
Vienna, Austria
Hall B Stand D3.04

AACVPR

September 6-8
Orlando, FL
Booth #408

WAMES Annual Meeting

September 25-27

**September 25-27
Madison, WI**

CONTACT US

For ordering information contact Customer Service:

United Kingdom	+44 (0) 1189 367060
France	+33 (0) 05 61 08 98 58
Germany	+49 (0) 202 739 55429
Italy	+39 049 784 0142
	customerservice.europe@chartindustries.com
Australia/New Zealand	+61 2 9749 4333
Asia/Pac Rim	770.721.7759
The Americas	770.721.7759
US Toll Free	800.482.2473
	customerservice.usa@chartindustries.com

For technical information contact Technical Service:

United Kingdom	+44 (0) 1189 367060
France	+33 (0) 05 61 08 98 58
Germany	+49 (0) 202 739 55407
Italy	+39 049 644 498
	techservice.europe@chartindustries.com
Asia/Pac Rim	+61 2 9749 4333
	techservice.asia@chartindustries.com
The Americas	770.721.7759
	techservice.usa@chartindustries.com
US Toll Free	800.482.2473
	techservice.usa@chartindustries.com

[Forward email](#)



Try it FREE today.

This email was sent to snystrom@sequal.com by taylor.erwin@chartindustries.com | [Update Profile/Email Address](#) | Instant removal with [SafeUnsubscribe™](#) | [Privacy Policy](#).

Chart Industries | 2200 Airport Industrial Dr. | Ste. 500 | Ball Ground | GA | 30107