

# July 2023 Med Tips

**Don't miss out on our upcoming Virtual Service Schools!**

## CAIRE Service School Trainings and Webinars 2023

**CAIRE offers In-person and Virtual Service Schools covering both LOX and Concentrator lines.**

Each class is a comprehensive program that focuses on the technical and service aspects of the CAIRE family products. Class time is divided between lecture and hands-on workshops. The seminars will help the student develop a better understanding of how liquid oxygen equipment or concentrators work, how to identify the symptoms and causes of potential problems and how to use the technical information that is available in the Technical Manuals. Registration for CAIRE's Service Schools is mandatory. Registration forms must be received two weeks prior to the start of the class in order to guarantee availability and materials.

**Table 1 - Details of upcoming training.**

Type	Language	Location	Training Dates	Registration by	Training Type
LOX Germany	English	Langenfeld, Germany	25-July-23	11-July	In person
Conc Germany	English	Langenfeld, Germany	26-27 July-23	11-July	In person
Conc USA	English	Ball Ground, GA USA	21-23 August-23	7-August	In person
LOX USA	English	Ball Ground, GA USA	24 August-23	7-August	In person
LOX Germany	German	Langenfeld, Germany	23-August-23	9-August	In person
Conc Germany	German	Langenfeld, Germany	12-14 September-23	29-August	In person
LOX France	French	Toulouse, France	19-September-23	5-September	In person
Conc France	French	Toulouse, France	20-21 September-23	5-September	In person
LOX Italy	Italian	Padova, Italy	11-October-23	27-September	In person
LOX LATAM	Spanish	Latin America	17-October-23	3-October	Remote
Conc LATAM	Spanish	Latin America	18-19 October-23	3-October	Remote
LOX Germany	German	Langenfeld, Germany	8-November-23	25-October	In person
Conc USA	English	Ball Ground, GA USA	13-15 November-23	30-October	In person
LOX USA	English	Ball Ground, GA USA	16 November-23	30-October	In person

\*We reserve the right to cancel training seminars at short notice. Customers should ensure that they take necessary precautions to ensure costs are covered in case of cancellation.

\*\* Training will be in the form of a Webinar.

### Concentrator Service School Topics include:

- Concentrator hazards and safety precautions
- Principles of pressure, flow, and saturation
- Functions of the major components of a portable/stationary concentrator
- Theory of operation

- Set up and use of test equipment
- Troubleshooting, repair and performance verification/testing procedures

**LOX Service School Topics include:**

- Liquid oxygen (LOX) hazards and safety precautions
- Principles of pressure, flow and liquid oxygen saturation
- Functions of the major components of a liquid oxygen system
- HELIOS™ system theory of operation
- Reservoir and portable filling procedures
- Set up and use of test equipment

**Please submit your registrations forms no later than the dates in Table 1 above. If you are interested in the service schools mentioned above, and it is past the registration date, please reach out to the registration emails below.**

**To register for Service School, please email:**

[Techservice.global@caireinc.com](mailto:Techservice.global@caireinc.com) for USA Training or [jim.gibson@caireinc.com](mailto:jim.gibson@caireinc.com) for European Training.

## **PRODUCT UPDATES**

### **Oxygen Concentrators Pediatric Options**

CAIRE offers two options for pediatric flow deliveries. The NewLife® Intensity® 10 Dual Flow or the SureFlow™.

The NewLife Intensity 10 Dual Flow models can be retrofitted with a pediatric flowmeter – FM001-2, this pediatric flowmeter is 2 LPM with 1/8 increments.

See below table below for dual models available, the pediatric flowmeter has to be ordered separately.

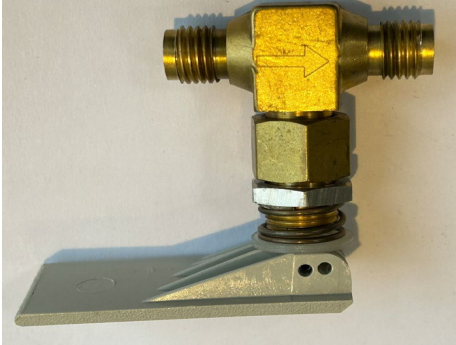
The SureFlow can be used in combination with a VisionAire 5™, Companion 5™, NewLife Series or CAIRE® Liquid Oxygen Reservoir to provide low flow delivery via wall-mounting or sitting on a table. For SureFlow with 2 LPM flowmeters, use CAIRE part number FM069-2.

#### **NewLife Intensity 10 – Dual Models available**

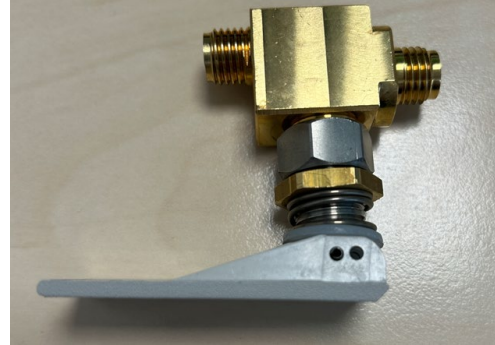
<b>Part Number</b>	<b>Description</b>	<b>Model Type</b>
AS099-4	Dual Flow, O2 Monitor, English Man, US Cord	120V/60HZ Model
AS099-10	Dual Flow, O2 Monitor, Multi Lang Man, EUR Cord	230V/50HZ Model
AS099-201	Dual Flow, O2 Monitor, Multi Lang Man, UK Cord	230V/50HZ Model
AS099-200	Dual Flow, O2 Monitor, Multi Lang Man, AUS Cord	230V/50HZ Model

### **Companion® Portables, C1000/C1000T Vent Valve**

CAIRE® would like to notify our valued customers that due to a change of supplier there has been a design change to the C1000/C1000T vent valve. The new valve does not have a directional arrow and the connections are offset. See figure 1 below.



Previous design vent valve with directional arrow



Current design, no directional arrow and offset connections.

Figure 1.

The current design vent valve should be fitted as per Figure 2.

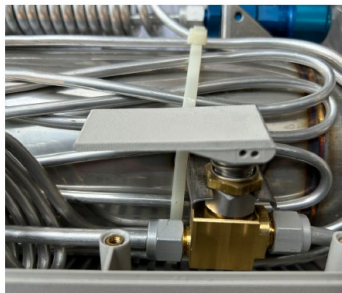


Figure 2.

Please refer to Service Bulletin 21498516 for more details.

## Helpful Hints & FAQs

## FreeStyle Comfort DC Power Operation

The FreeStyle Comfort is fully functional for use on DC power. The FreeStyle Comfort will also recharge the battery pack if needed any time DC power is available. The battery pack will recharge both if the unit is off, or on and in use.

**Note:** Do not operate the device 12 VDC car outlets while the vehicle is turned off

### Instructions:

1. Consult your vehicle Owner's manual for its DC Accessory outlet requirements.
2. Secure your FreeStyle Comfort within your vehicle. Position the unit upright in the vehicle so you can view alerts and alarms after going through this exercise and are using the concentrator.
3. Turn on your motor vehicle.
4. Connect the DC power supply to the power port receptacle front, bottom right side of the FreeStyle Comfort. Be sure to push inward so that the connection is secure.
5. Connect the opposite end of the DC power cord to the automobile or other DC accessory outlet.
6. Turn on the FreeStyle Comfort by pressing the power button and select your prescribed flow setting utilizing the increase (+) or decrease (-) flow buttons.

## Document Update

We advise our valued customers to monitor and check that they are using the most recent revision of any documents for the model of equipment they have. Below is a list of documents that were released/updated during June 2023.

- Visionaire 5 Portuguese – ML-CONC0082-6 Rev G

## Med Tips Distribution!

The CAIRE team is asking all current subscribers to CAIRE's Med Tips Newsletter to register in order to continue receiving this monthly communication.

Please click this link - <http://go.pardot.com/l/710913/2022-01-17/2pgcj9> - and provide us with your current information. Thank you and we appreciate your support.

**CONTACT:** For technical questions or concerns, contact Technical Service:



USA: 800-482-2473

[techservice.global@caireinc.com](mailto:techservice.global@caireinc.com)

Europe: +44 (0) 118 936 7060

[techservice.global@caireinc.com](mailto:techservice.global@caireinc.com)

For ordering information or general inquires, contact Customer Service:

USA: 800-482-2473

[customerservice.usa@caireinc.com](mailto:customerservice.usa@caireinc.com)

Europe: +44 (0) 118 936 7060

[customerservice.europe@caireinc.com](mailto:customerservice.europe@caireinc.com)

*© Copyright 2023 CAIRE Inc. All Rights Reserved. CAIRE Inc. reserves the right to discontinue its products, or change the prices, materials, equipment, quality, descriptions, specifications and/or processes to its products at any time without prior notice and with no further obligation or consequence. All rights not expressly stated herein are reserved by us, as applicable.*

*Please consult the applicable product instructions for use for product indications, contraindications, warnings, precautions, and detailed safety information.*

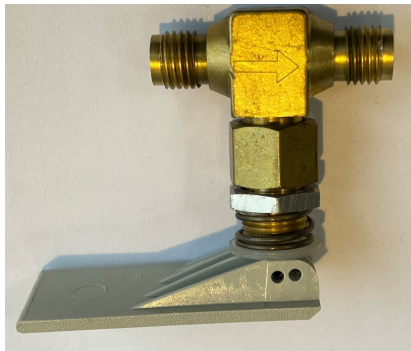
## PN 21498516 A

**RELEASE DATE:** June 23, 2023

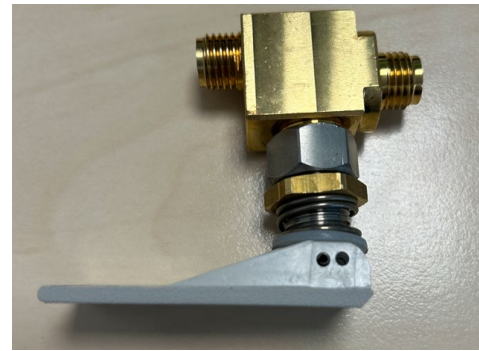
**MODEL:** Companion® Portables, C1000/C1000T

**ISSUE:** Correct fitting of B-776438-00 Vent Valve.

**NOTES:** CAIRE® would like to notify our valued customers that due to a change of supplier there has been a design change to the C1000/C1000T vent valve. The new valve does not have a directional arrow and the connections are offset. See figure 1 below.



Previous design vent valve with directional arrow



Current design, no directional arrow and offset connections.

Figure 1.

The current design vent valve should be fitted as per Figure 2. If fitted incorrectly then the valve may leak and cause internal pressure issues with the Equipment.

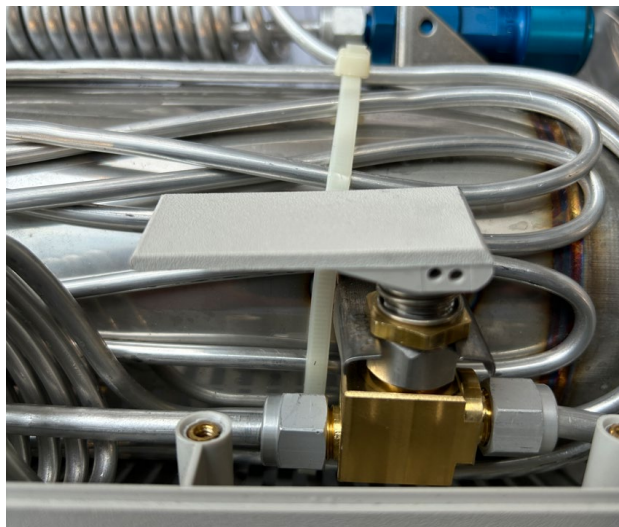


Figure 2

For further information please contact the Technical Service Team.

**CONTACT:**

For technical questions or concerns, contact Technical Service:

USA: 800-482-2473

Europe: +44 (0) 118 936 7060

[techservice.global@caireinc.com](mailto:techservice.global@caireinc.com)

For ordering information or general inquiries, contact Customer Service:

USA: 800-482-2473

[customerservice.usa@caireinc.com](mailto:customerservice.usa@caireinc.com)

Europe: +44 (0) 118 936 7060

[customerservice.europe@caireinc.com](mailto:customerservice.europe@caireinc.com)

Copyright © 2023 CAIRE Inc.

CAIRE Inc. reserves the right to discontinue its products, or change the prices, materials, equipment, quality, descriptions, specifications and/or processes to its products at any time without prior notice and with no further obligation or consequence. All rights not expressly stated herein are reserved by us, as applicable.