

Having trouble viewing this email? [Click here](#)

Hi, just a reminder that you're receiving this email because you have expressed an interest in Chart SeQual Technologies Inc. Don't forget to add taylor.erwin@chartindustries.com to your address book so we'll be sure to land in your inbox.

You may [unsubscribe](#) if you no longer wish to receive our emails.



Med Tips

In This Issue

[Product Information](#)
[Helpful Hints / FAQs](#)
[Accessories](#)
[Service Schools & Tradeshow](#)
[Contact Us](#)

PDF Version

To view Med Tips in PDF,
[click here](#).

Join Our List

[Join Our Mailing List!](#)

September, 2011

PRODUCT INFORMATION

Companion Shroud Screws

The part number for the 5 screws that secure the top cover to the cover body on a Companion Reservoir has changed. The previous part number, #B-775284-00, will no longer be active. Effective immediately, order these screws using part number **#CA002305**.

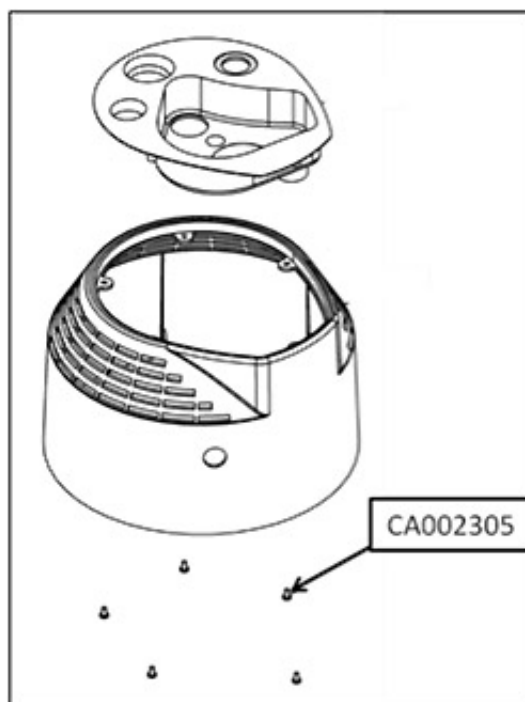


Figure 1 -- Companion Shroud Screws

Companion Reservoir Contents Indicator

The Companion reservoir contents indicators are now being manufactured with a new plastic material. This change makes the part more resistant to cleaners and leak detectors. The top of the contents indicator will now have a blue tint and the bottom of it will be black. Please download the attached [technical bulletin](#) outlining the change.



Old Material New Material
Figure 2 -- Companion Contents Indicator

Spirit Packaging Change

The 2 Alkaline C batteries used in all Spirit portables will no longer be shipped inside of the unit. Effective immediately, they will be removed from the Spirit prior to packaging and will be placed in a plastic bag. This bag will be packaged in the larger bag that contains the warranty statement and operating instructions. The batteries will need to be installed in the Spirit prior to use.

Eclipse Preventative Maintenance Kit (#5022-SEQ)

The Eclipse preventative maintenance kit now includes additional parts to service 2011 Eclipse units containing the re-designed HEPA filter and product tank. (For more information on the new filter and product tank, see the [July](#) edition of Med Tips.)

In addition to its previous components, the P.M. Kit now includes a new style HEPA filter (#9765-SEQ), and the two o-rings (#9250-SEQ & #9251-SEQ) used to secure the filter into its dock and the dock into the product tank.

These additional parts are not necessary for servicing Eclipse units manufactured prior to 2011.

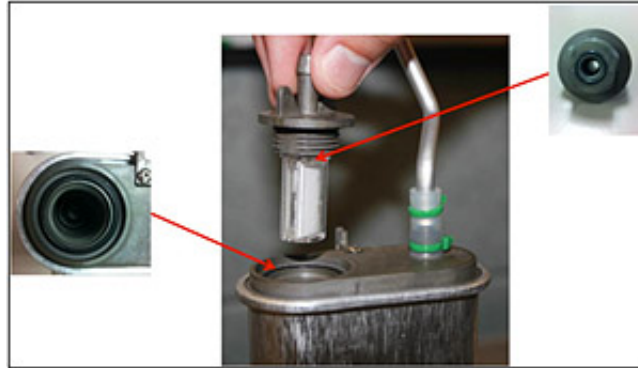


Figure 3 -- O-Ring Location



Figure 4 -- Additions to 5022-SEQ

Integra Outlet

The oxygen outlet for all Integra concentrators is an orderable part. This black elbow with the metal DISS fitting can be ordered using part number **#2659-SEQ**.



Figure 5 -- Integra DISS Outlet

HELPFUL HINTS / FAQs

CAIRE Generation 4 Meter

All CAIRE Liberators, Strollers, and Sprints that are equipped with the older contents indicators can be upgraded to utilize the current Generator 4 contents meter. Below is a table to use as a guideline for ordering Generation 4 upgrade kits. All upgrade kits include the new meter and necessary wiring.

CAIRE Unit	Upgrade Kit	Additional Parts Required
Gen 2 Liberator	13199653	-
Gen 3 Liberator	13219221	-
Gen 2 Stroller	13199653	-
Gen 3 Stroller	13199661	12932526 - Dome Cover
Hi-Flow Stroller	13199653	-
Gen 3 Sprint	13199661	12932526 - Dome Cover
Gen 3 Low Loss	13579584	13717262 - Harness Adaptor Nut
Gen 3 EMS Liberator	13579584	13717262 - Harness Adaptor Nut

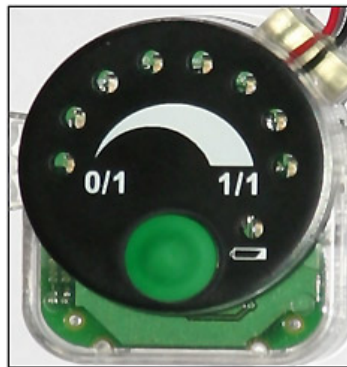


Figure 6 -- G4 Meter

15LPM Liberator Upgrade

All Liberator 20, 30, 37, 45, and 60 reservoirs currently come with a 0-15LPM flow control valve. However, many Generation 3 Liberators contained flow control valves that only provided 0-6LPM flow. These reservoirs can be upgraded to provide flow up to 15LPM.

In addition to the flow control valve, the warming coils will also need to be replaced to support the increased flow.

A 15LPM upgrade kit is available using part number **#13440224**. This kit

contains all the parts necessary to upgrade the reservoirs: the 0-15LPM flow control valve, flow rate decals, 15LPM warming coils, and the ferrules and cable ties to secure the coils.

SeQual Maximum Tubing Length

Q: What is the maximum tubing length that should be used on the Eclipse?

A: 50 ft (15.2 m) on continuous flow and 7 ft (2.1 m) on demand flow. A humidifier bottle may only be used on continuous flow.

Q: What is the maximum tubing length that should be used with the Integra?

A: 50 ft (15.2 m)

ACCESSORIES

LOX Transfer Lines

Below is a list of the standard liquid oxygen transfer lines that are offered by CAIRE. All of these have 5/8 in (15.9 mm) swivel nuts on each end. CAIRE recommends that all transfer lines be kept to the minimum length possible to minimize fill times and product losses.

Length	Part Number
4 feet (1.2 meters)	9713139
6 feet (1.8 meters)	9713119
8 feet (2.4 meters)	10546550
10 feet (3.0 meters)	10565161

Eclipse 1 Power Supplies

Replacement AC & DC power supplies made specifically for the Eclipse 1 are no longer available. The power supplies currently used for the Eclipse 2 & 3 are the only models currently in production.

Effective immediately, a power supply kit will need to be ordered when replacing Eclipse 1 power supplies only. These kits will include the currently produced Eclipse 2 & 3 power supply, as well as an adaptor to allow this power supply to fit the Eclipse 1 electrical connection. The AC power supply kit is ordered using part number #20538528, and the DC kit is ordered using part number #20542423.

The table below gives the part numbers that should be used when ordering replacement power supplies for all models of the Eclipse. The part numbers and models of the Eclipse 2 & 3 power supplies have not changed.

Model	AC Power Supply	DC Power Supply
-------	-----------------	-----------------

Eclipse 1	20538528	20542423
Eclipse 2	5941-SEQ	5942-SEQ
Eclipse 3	5941-SEQ	5942-SEQ

SERVICE SCHOOLS & TRADESHOWS

Service Schools

Concentrator Technical Training in English

October 4 & 5
Wuppertal, Germany

LOX Technical Training in French

October 12 & 13
Toulouse, France

Eclipse Technical Training in Spanish

October 19 & 20
Toulouse, France

Concentrator Technical Training in English

November 9 & 10
Wuppertal, Germany

LOX Technical Training in French

November 15 & 16
Toulouse, France

LOX Technical Training in English

December 6 & 7
Ball Ground, Georgia

Concentrator Technical Training in English

December 13 & 14
Ball Ground, Georgia

Concentrator Technical Training in French

December 14 & 15
Wuppertal, Germany

To register for US LOX Training, [download this form](#).

To register for US Concentrator Training, [download this form](#).

For more information on the European trainings, please contact Jim Gibson at jim.gibson@chart-ind.com.

Tradeshows

We'll also be present at the following tradeshows, so feel free to stop at our booth:

ERS

September 24th - September 28th
Amsterdam, Netherlands

MedTrade

October 25th - October 27th
Atlanta, Georgia

Medica

November 16th - November 19th
Dusseldorf, Germany

CONTACT US

For ordering information contact Customer Service:

United Kingdom	+44 (0) 1344 403 100
France	+33 (0) 9707 54 646
Germany	+49 (0) 202 739 55429
Italy	+39 049 784 0142
	customerservice.europe@chart-ind.com
Australia/New Zealand	+61 2 9749 4333
Asia/Pac Rim	770.721.7759
The Americas	770.721.7759
US Toll Free	800.482.2473
	customerservice.usa@chart-ind.com

For technical information contact Technical Service:

United Kingdom	+44 (0) 1344 403 100
France	+33 (0) 5610 82 977
Germany	+49 (0) 202 739 55407
Italy	+39 049 644 498
	techservice.europe@chart-ind.com
Asia/Pac Rim	770.721.7759
	techservice.usa@chart-ind.com
The Americas	770.721.7759
	techservice.usa@chart-ind.com
US Toll Free	800.482.2473
	techservice.usa@chart-ind.com

[Forward email](#)

Try it FREE today.

This email was sent to snystrom@sequal.com by taylor.erwin@chartindustries.com | [Update Profile/Email Address](#) | Instant removal with [SafeUnsubscribe™](#) | [Privacy Policy](#).

Chart Industries | 2200 Airport Industrial Dr. | Ste. 500 | Ball Ground | GA | 30107